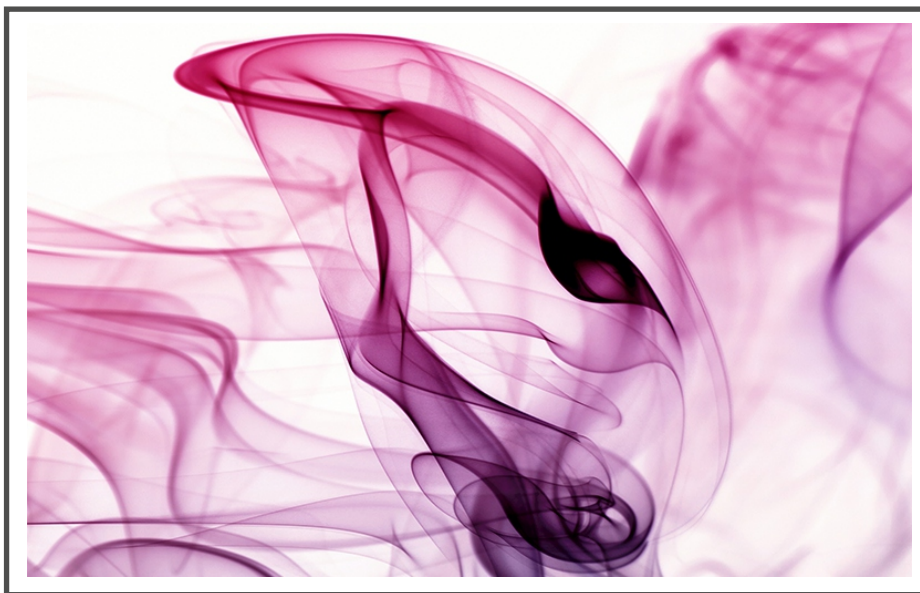




Product Code: -Texture-1A
9' (W) x 10' (H) | 108" x 120" = 90.0 SQF



Product Code: Texture-1B
5' (W) x 8' (H) | 60" x 96" = 40.0 SQF



Product Code: Texture-1C
8' (W) x 5' (H) | 96" x 60" = 40.0 SQF

Application for (Blinds):



Roman

Panel

Combi

Roller



Product Code: -Texture-2A
9' (W) x 10' (H) | 108" x 120" = 90.0 SQF



Product Code: Texture-2B
5' (W) x 8' (H) | 60" x 96" = 40.0 SQF



Product Code: Texture-2C
8' (W) x 5' (H) | 96" x 60" = 40.0 SQF

Application for (Blinds):

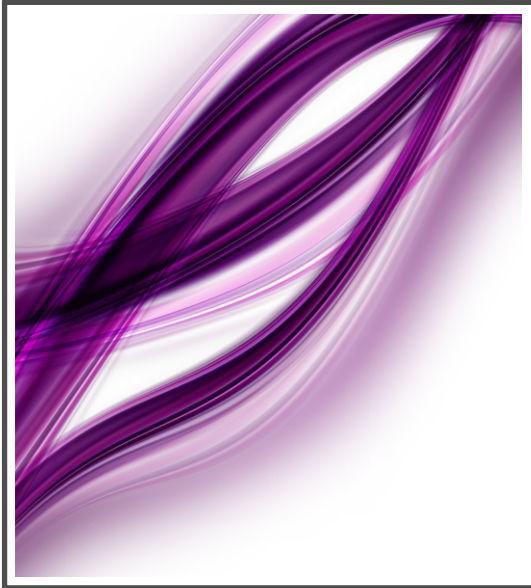


Roman

Panel

Combi

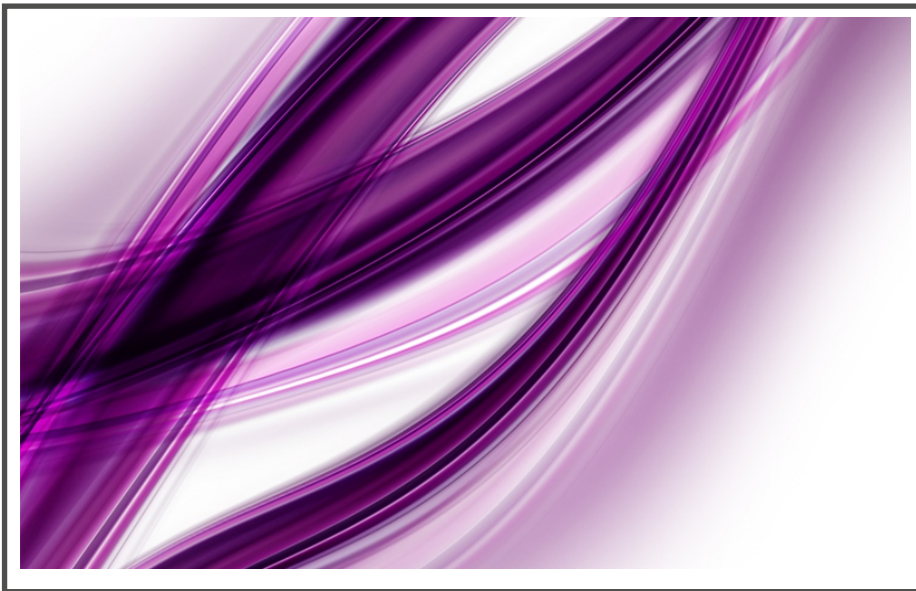
Roller



Product Code: -Texture-3A
9' (W) x 10' (H) | 108" x 120" = 90.0 SQF



Product Code: Texture-3B
5' (W) x 8' (H) | 60" x 96" = 40.0 SQF



Product Code: Texture-3C
8' (W) x 5' (H) | 96" x 60" = 40.0 SQF

Application for (Blinds):



Roman

Panel

Combi

Roller



Product Code: -Texture-4A
9' (W) x 10' (H) | 108" x 120" = 90.0 SQF



Product Code: Texture-4B
5' (W) x 8' (H) | 60" x 96" = 40.0 SQF



Product Code: Texture-4C
8' (W) x 5' (H) | 96" x 60" = 40.0 SQF

Application for (Blinds):



Roman

Panel

Combi

Roller

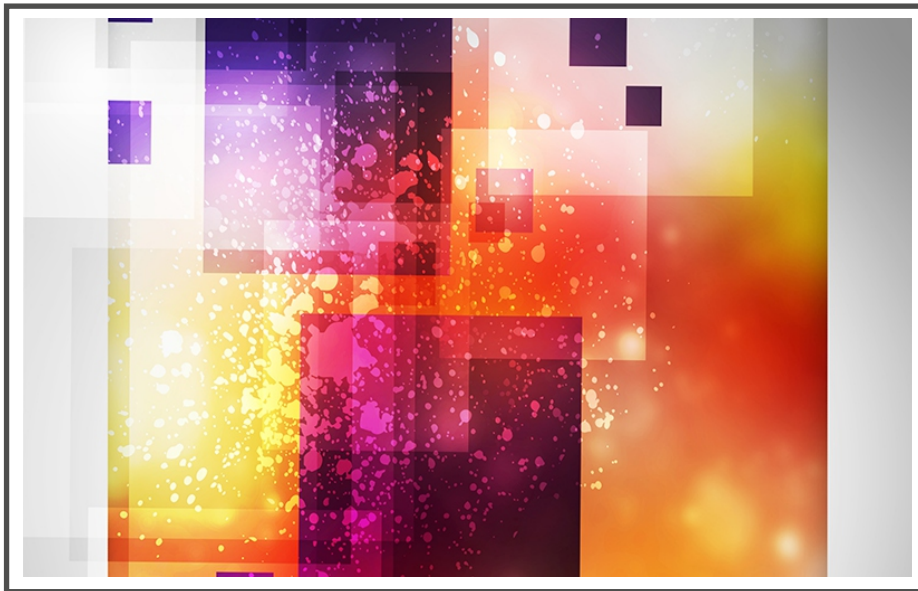




Product Code: -Texture-5A
9' (W) x 10' (H) | 108" x 120" = 90.0 SQF



Product Code: Texture-5B
5' (W) x 8' (H) | 60" x 96" = 40.0 SQF



Product Code: Texture-5C
8' (W) x 5' (H) | 96" x 60" = 40.0 SQF

Application for (Blinds):



Roman

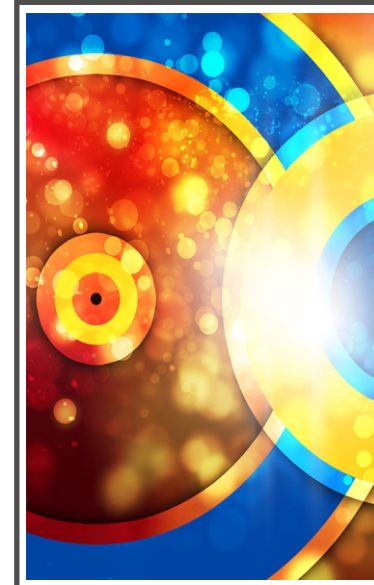
Panel

Combi

Roller



Product Code: -Texture-6A
9' (W) x 10' (H) | 108" x 120" = 90.0 SQF



Product Code: Texture-6B
5' (W) x 8' (H) | 60" x 96" = 40.0 SQF



Product Code: Texture-6C
8' (W) x 5' (H) | 96" x 60" = 40.0 SQF

Application for (Blinds):

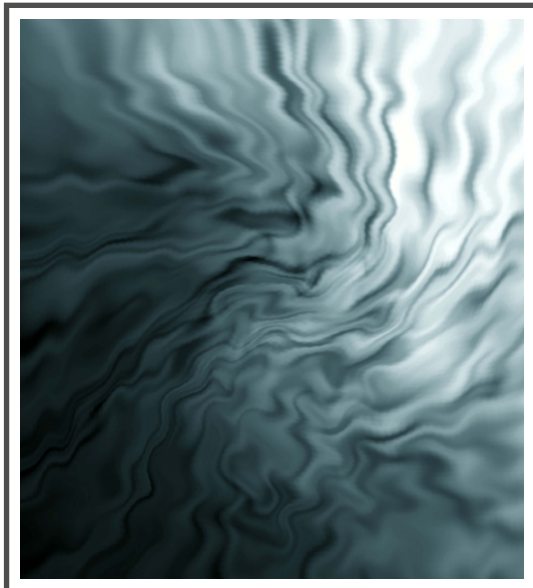


Roman

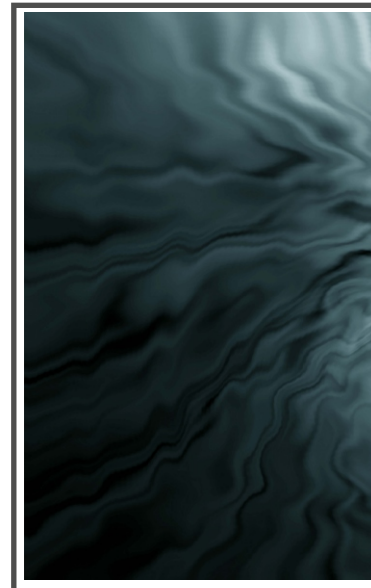
Panel

Combi

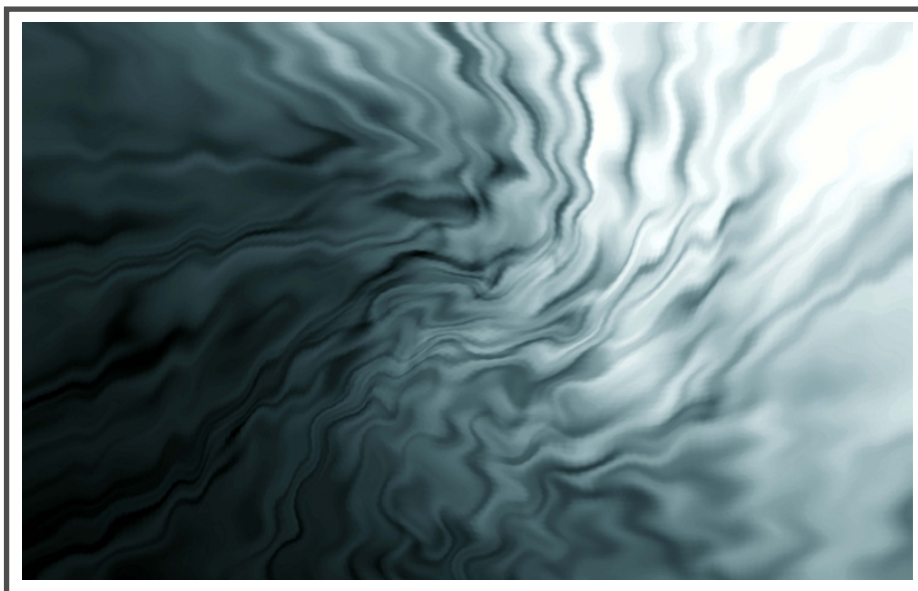
Roller



Product Code: -Texture-7A
9' (W) x 10' (H) | 108" x 120" = 90.0 SQF



Product Code: Texture-7B
5' (W) x 8' (H) | 60" x 96" = 40.0 SQF



Product Code: Texture-7C
8' (W) x 5' (H) | 96" x 60" = 40.0 SQF

Application for (Blinds):



Roman

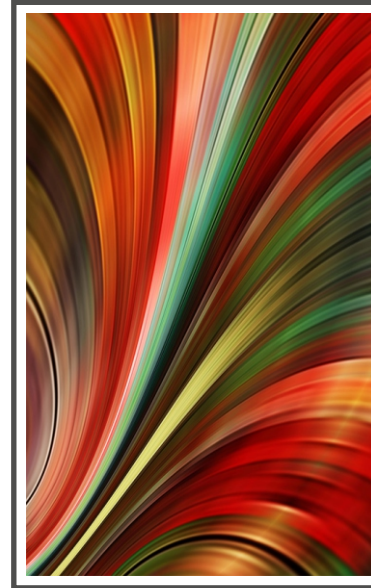
Panel

Combi

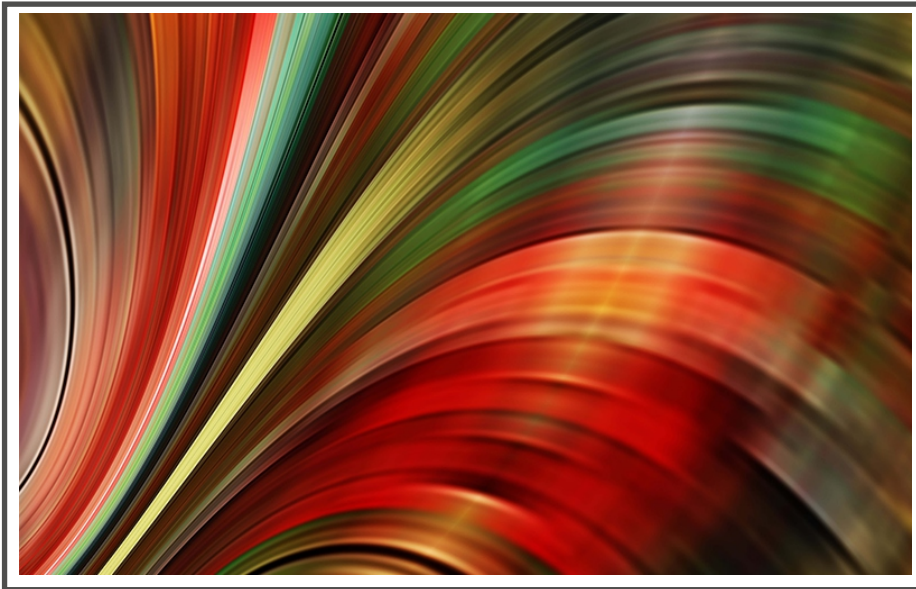
Roller



Product Code: -Texture-8A
9' (W) x 10' (H) | 108" x 120" = 90.0 SQF



Product Code: Texture-8B
5' (W) x 8' (H) | 60" x 96" = 40.0 SQF



Product Code: Texture-8C
8' (W) x 5' (H) | 96" x 60" = 40.0 SQF

Application for (Blinds):



Roman

Panel

Combi

Roller





Product Code: -Texture-9A
 9' (W) x 10' (H) | 108" x 120" = 90.0 SQF



Product Code: Texture-9B
 5' (W) x 8' (H) | 60" x 96" = 40.0 SQF



Product Code: Texture-9C
 8' (W) x 5' (H) | 96" x 60" = 40.0 SQF

Application for (Blinds):

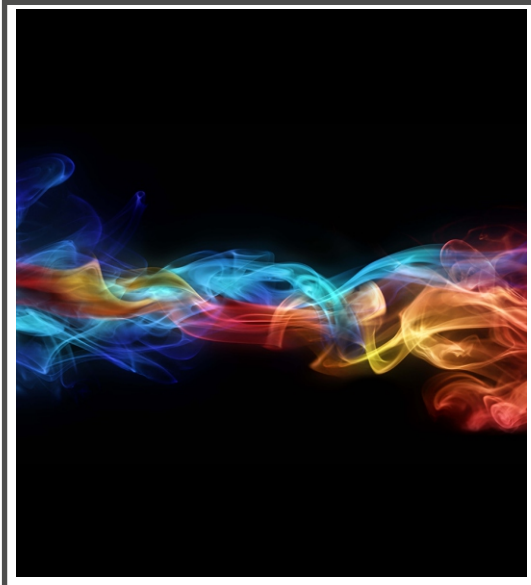


Roman

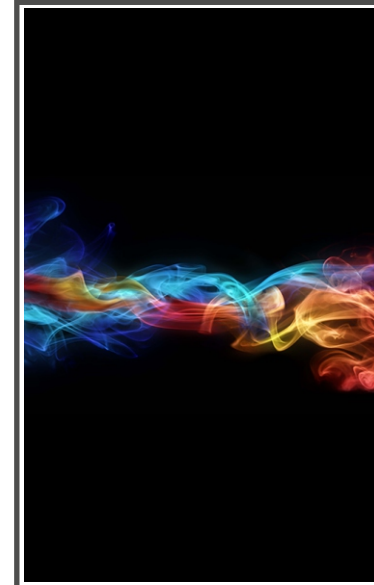
Panel

Combi

Roller



Product Code: -Texture-10A
9' (W) x 10' (H) | 108" x 120" = 90.0 SQF



Product Code: Texture-10B
5' (W) x 8' (H) | 60" x 96" = 40.0 SQF



Product Code: Texture-10C
8' (W) x 5' (H) | 96" x 60" = 40.0 SQF

Application for (Blinds):

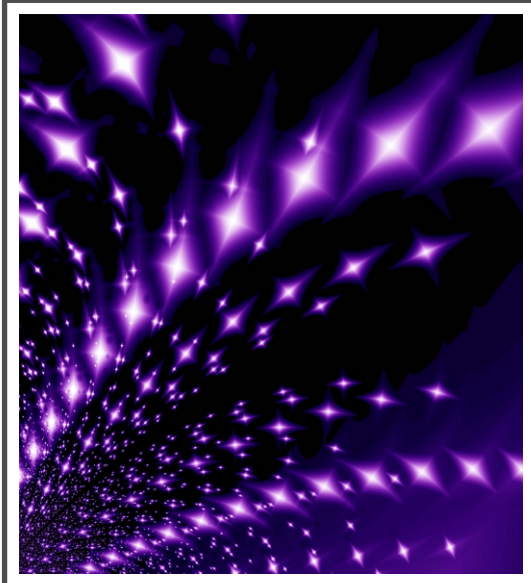


Roman

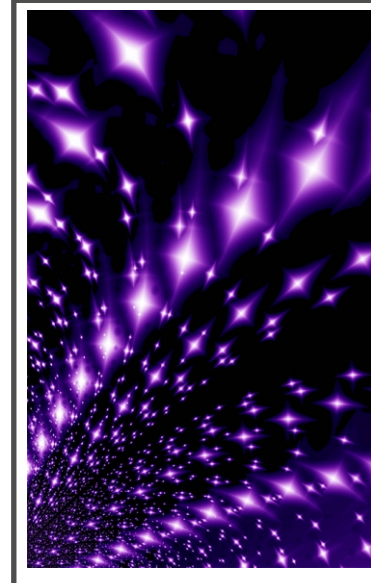
Panel

Combi

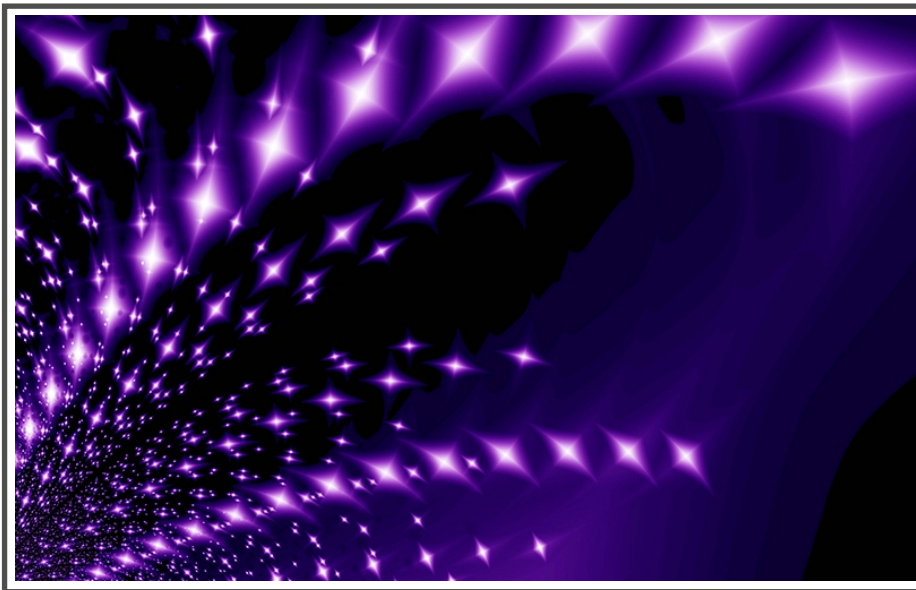
Roller



Product Code: -Texture-11A
9' (W) x 10' (H) | 108" x 120" = 90.0 SQF



Product Code: Texture-11B
5' (W) x 8' (H) | 60" x 96" = 40.0 SQF



Product Code: Texture-11C
8' (W) x 5' (H) | 96" x 60" = 40.0 SQF

Application for (Blinds):

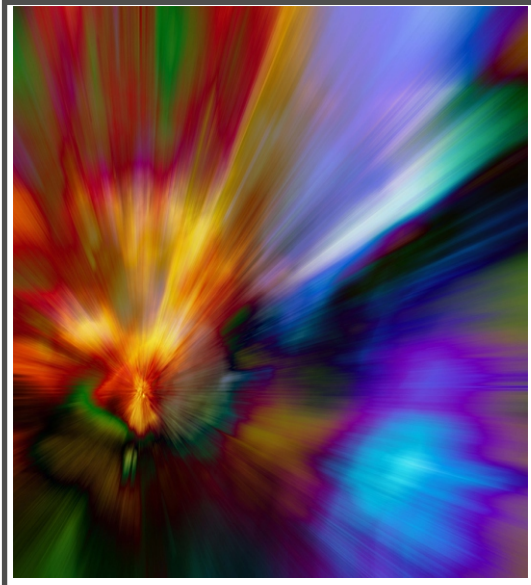


Roman

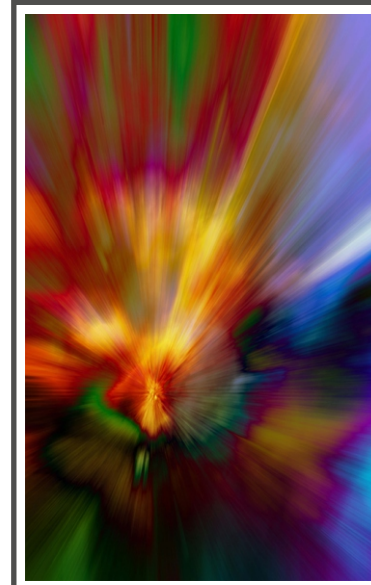
Panel

Combi

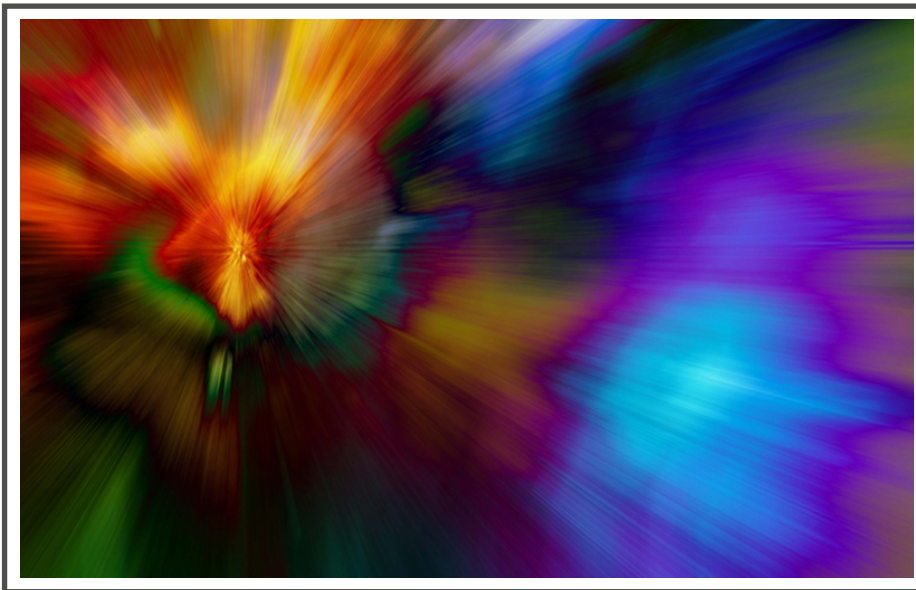
Roller



Product Code: -Texture-12A
9' (W) x 10' (H) | 108" x 120" = 90.0 SQF



Product Code: Texture-12B
5' (W) x 8' (H) | 60" x 96" = 40.0 SQF



Product Code: Texture-12C
8' (W) x 5' (H) | 96" x 60" = 40.0 SQF

Application for (Blinds):

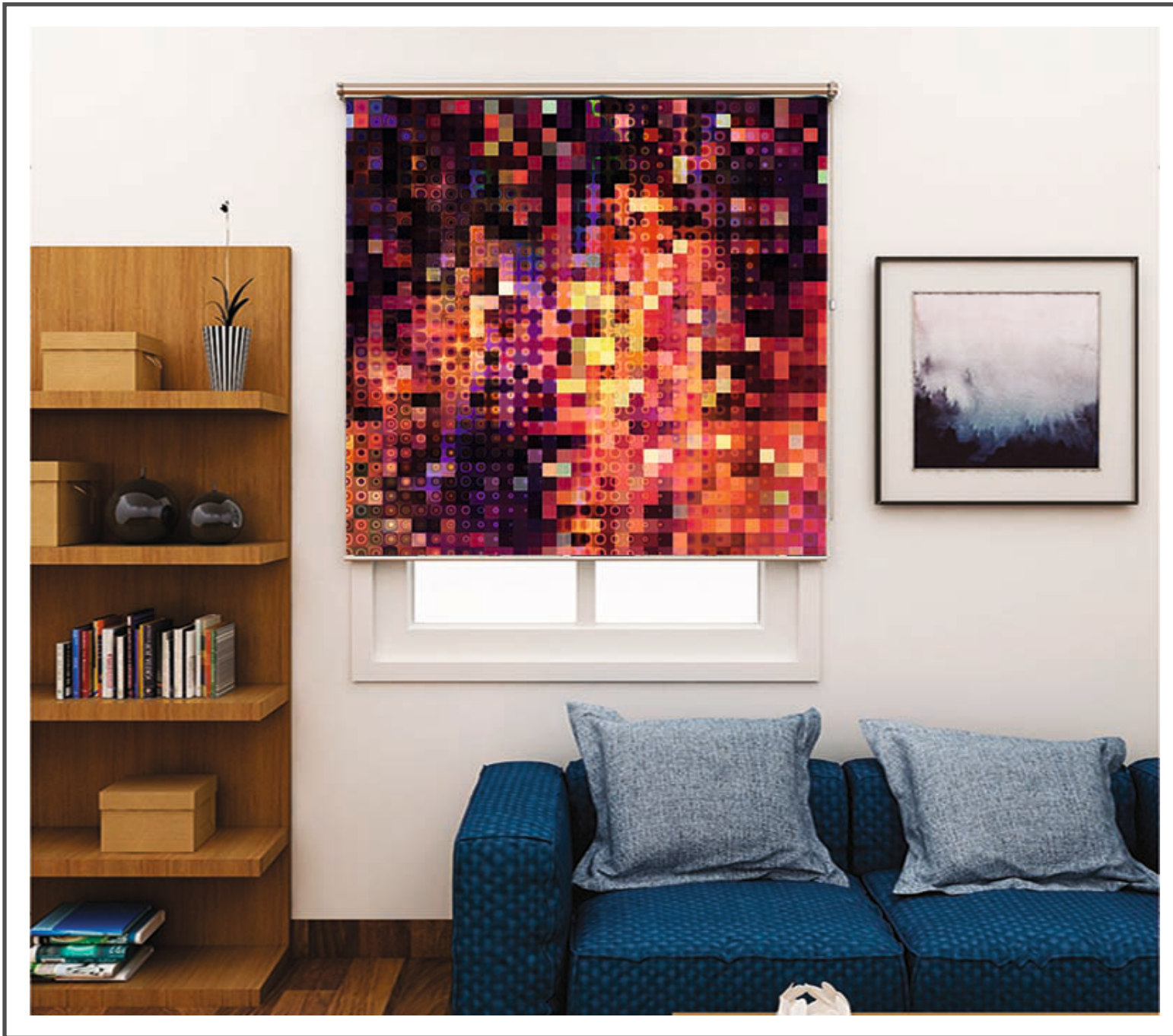


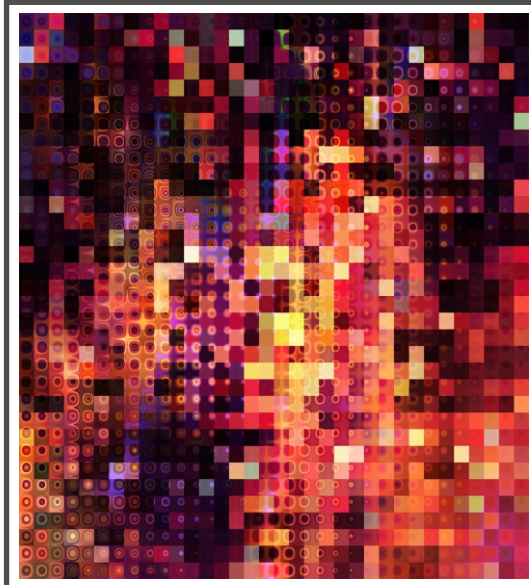
Roman

Panel

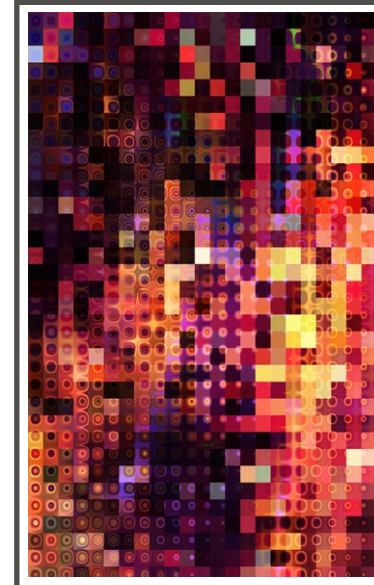
Combi

Roller

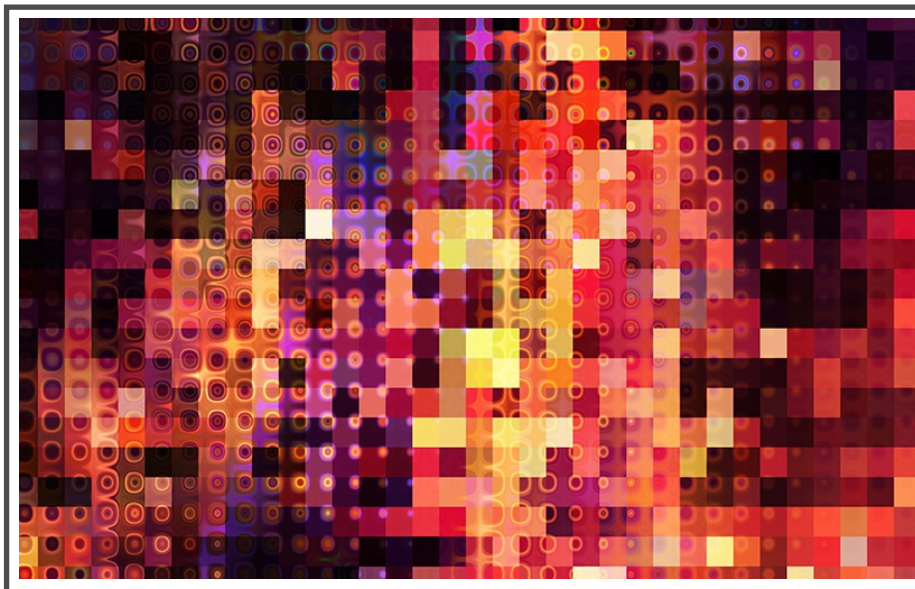




Product Code: -Texture-13A
9' (W) x 10' (H) | 108" x 120" = 90.0 SQF



Product Code: Texture-13B
5' (W) x 8' (H) | 60" x 96" = 40.0 SQF



Product Code: Texture-13C
8' (W) x 5' (H) | 96" x 60" = 40.0 SQF

Application for (Blinds):

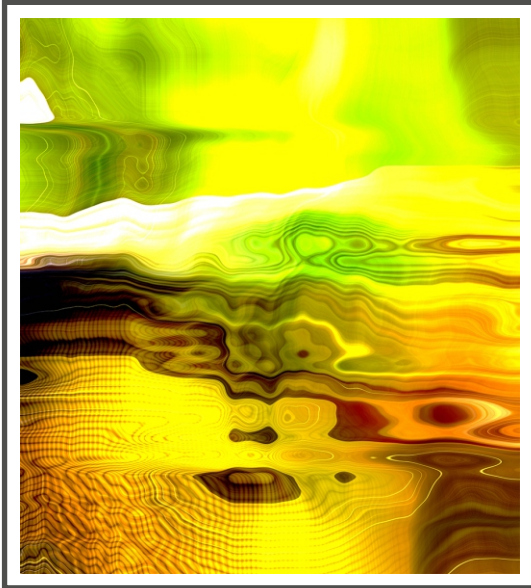


Roman

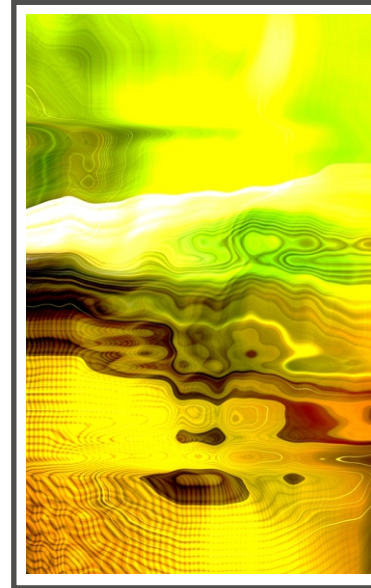
Panel

Combi

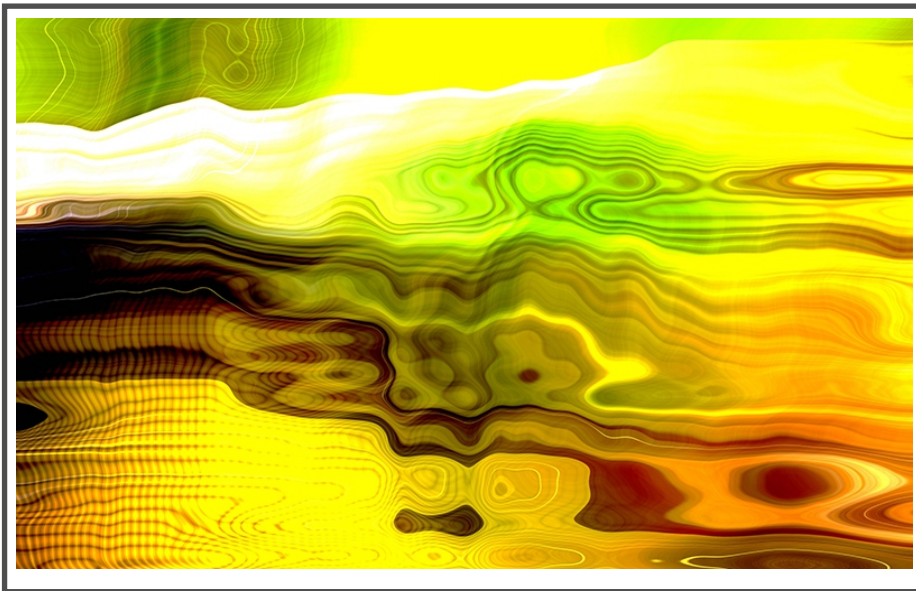
Roller



Product Code: -Texture-14A
9' (W) x 10' (H) | 108" x 120" = 90.0 SQF



Product Code: Texture-14B
5' (W) x 8' (H) | 60" x 96" = 40.0 SQF



Product Code: Texture-14C
8' (W) x 5' (H) | 96" x 60" = 40.0 SQF

Application for (Blinds):



Roman

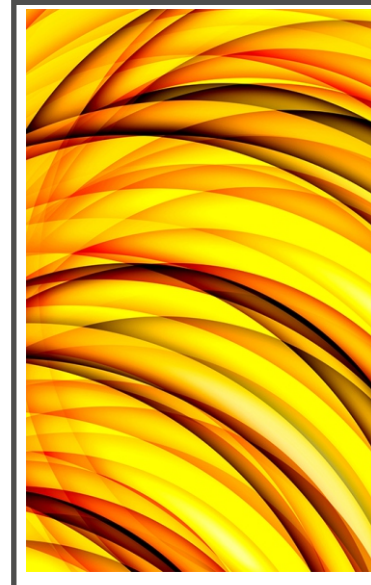
Panel

Combi

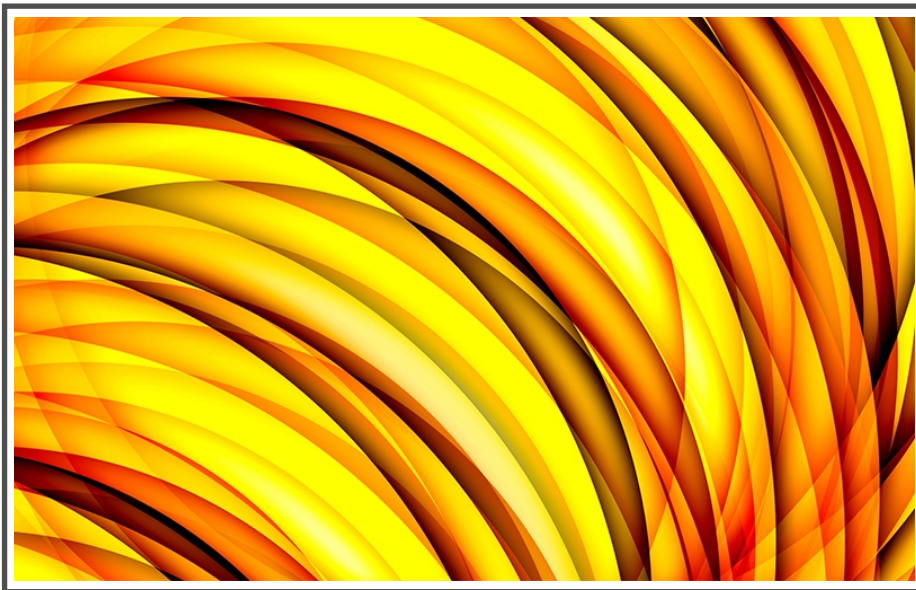
Roller



Product Code: -Texture-15A
9' (W) x 10' (H) | 108" x 120" = 90.0 SQF



Product Code: Texture-15B
5' (W) x 8' (H) | 60" x 96" = 40.0 SQF



Product Code: Texture-15C
8' (W) x 5' (H) | 96" x 60" = 40.0 SQF

Application for (Blinds):



Roman

Panel

Combi

Roller



Product Code: -Texture-16A
9' (W) x 10' (H) | 108" x 120" = 90.0 SQF



Product Code: Texture-16B
5' (W) x 8' (H) | 60" x 96" = 40.0 SQF



Product Code: Texture-16C
8' (W) x 5' (H) | 96" x 60" = 40.0 SQF

Application for (Blinds):



Roman

Panel

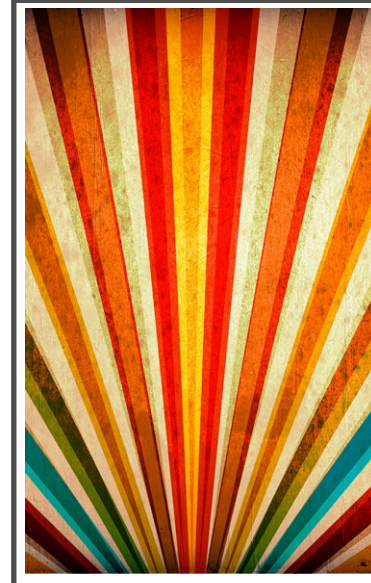
Combi

Roller





Product Code: -Texture-17A
9' (W) x 10' (H) | 108" x 120" = 90.0 SQF



Product Code: Texture-17B
5' (W) x 8' (H) | 60" x 96" = 40.0 SQF



Product Code: Texture-17C
8' (W) x 5' (H) | 96" x 60" = 40.0 SQF

Application for (Blinds):

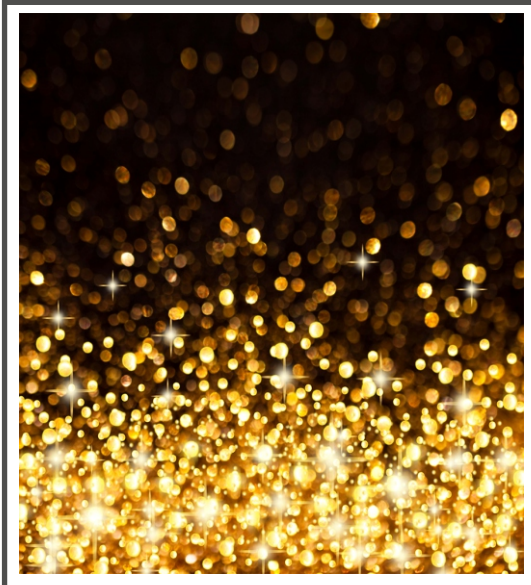


Roman

Panel

Combi

Roller



Product Code: -Texture-18A
9' (W) x 10' (H) | 108" x 120" = 90.0 SQF



Product Code: Texture-18B
5' (W) x 8' (H) | 60" x 96" = 40.0 SQF



Product Code: Texture-18C
8' (W) x 5' (H) | 96" x 60" = 40.0 SQF

Application for (Blinds):



Roman

Panel

Combi

Roller



Product Code: -Texture-19A
9' (W) x 10' (H) | 108" x 120" = 90.0 SQF



Product Code: Texture-19B
5' (W) x 8' (H) | 60" x 96" = 40.0 SQF



Product Code: Texture-19C
8' (W) x 5' (H) | 96" x 60" = 40.0 SQF

Application for (Blinds):

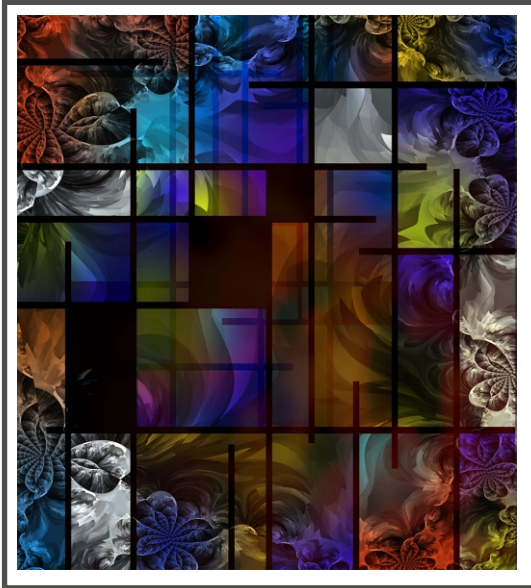


Roman

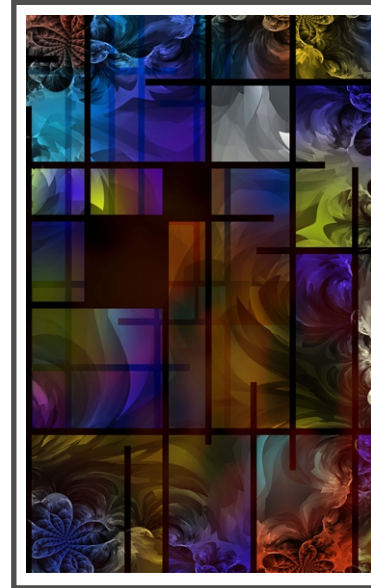
Panel

Combi

Roller



Product Code: -Texture-20A
9' (W) x 10' (H) | 108" x 120" = 90.0 SQF



Product Code: Texture-20B
5' (W) x 8' (H) | 60" x 96" = 40.0 SQF



Product Code: Texture-20C
8' (W) x 5' (H) | 96" x 60" = 40.0 SQF

Application for (Blinds):



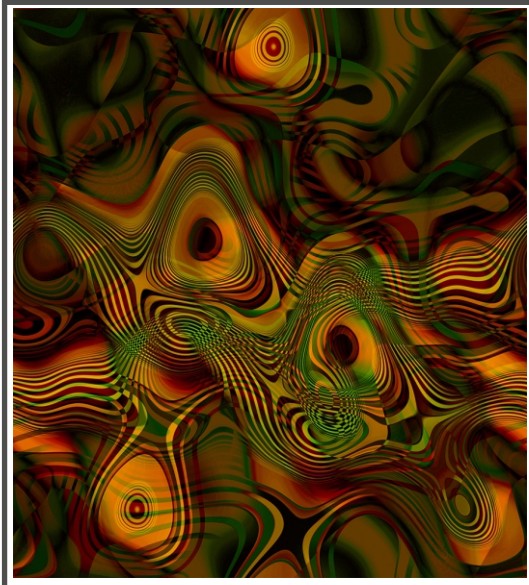
Roman

Panel

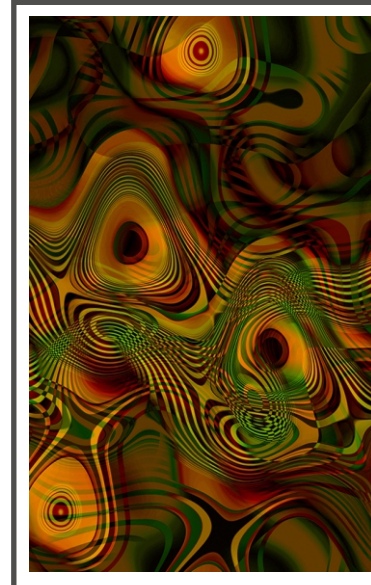
Combi

Roller

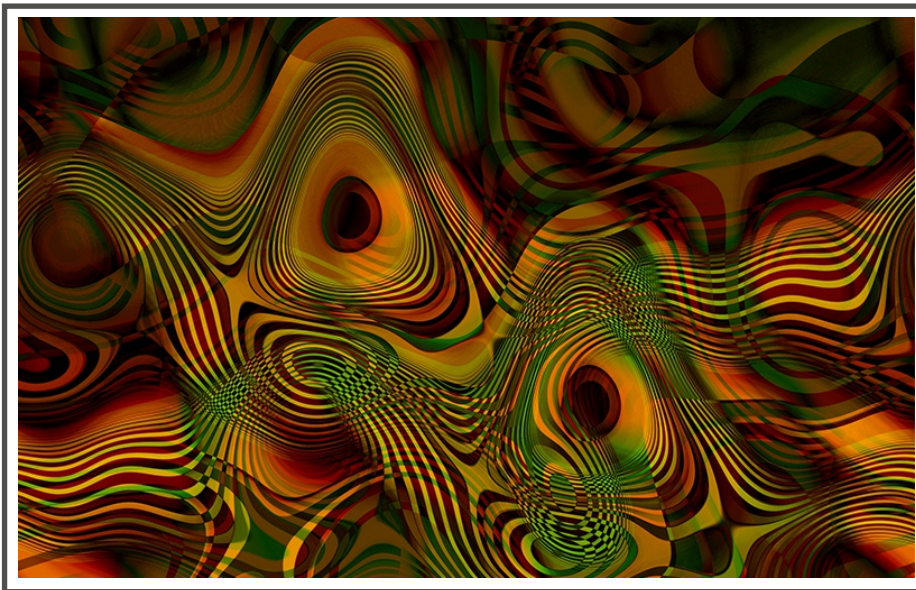




Product Code: -Texture-21A
9' (W) x 10' (H) | 108" x 120" = 90.0 SQF



Product Code: Texture-21B
5' (W) x 8' (H) | 60" x 96" = 40.0 SQF



Product Code: Texture-21C
8' (W) x 5' (H) | 96" x 60" = 40.0 SQF

Application for (Blinds):



Roman

Panel

Combi

Roller



Product Code: -Texture-22A
9' (W) x 10' (H) | 108" x 120" = 90.0 SQF



Product Code: Texture-22B
5' (W) x 8' (H) | 60" x 96" = 40.0 SQF



Product Code: Texture-22C
8' (W) x 5' (H) | 96" x 60" = 40.0 SQF

Application for (Blinds):



Roman

Panel

Combi

Roller



Product Code: -Texture-23A
9' (W) x 10' (H) | 108" x 120" = 90.0 SQF



Product Code: Texture-23B
5' (W) x 8' (H) | 60" x 96" = 40.0 SQF



Product Code: Texture-23C
8' (W) x 5' (H) | 96" x 60" = 40.0 SQF

Application for (Blinds):



Roman

Panel

Combi

Roller



Product Code: -Texture-24A
9' (W) x 10' (H) | 108" x 120" = 90.0 SQF



Product Code: Texture-24B
5' (W) x 8' (H) | 60" x 96" = 40.0 SQF



Product Code: Texture-24C
8' (W) x 5' (H) | 96" x 60" = 40.0 SQF

Application for (Blinds):



Roman

Panel

Combi

Roller





Product Code: -Texture-25A
9' (W) x 10' (H) | 108" x 120" = 90.0 SQF



Product Code: Texture-25B
5' (W) x 8' (H) | 60" x 96" = 40.0 SQF



Product Code: Texture-25C
8' (W) x 5' (H) | 96" x 60" = 40.0 SQF

Application for (Blinds):



Roman

Panel

Combi

Roller



Product Code: -Texture-26A
9' (W) x 10' (H) | 108" x 120" = 90.0 SQF



Product Code: Texture-26B
5' (W) x 8' (H) | 60" x 96" = 40.0 SQF



Product Code: Texture-26C
8' (W) x 5' (H) | 96" x 60" = 40.0 SQF

Application for (Blinds):

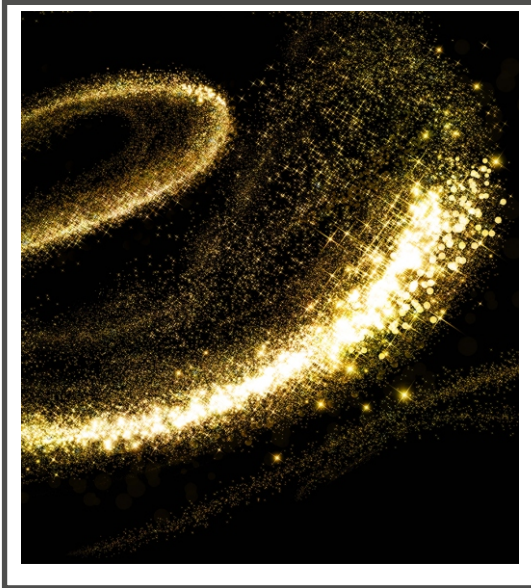


Roman

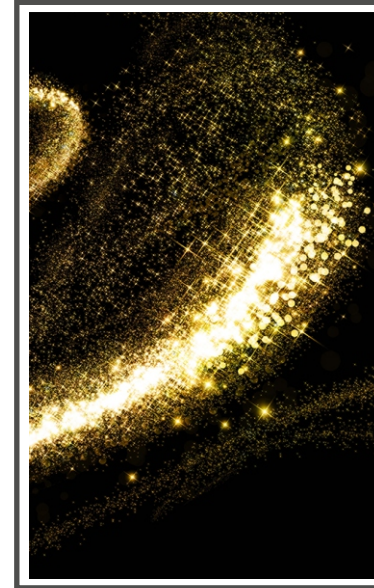
Panel

Combi

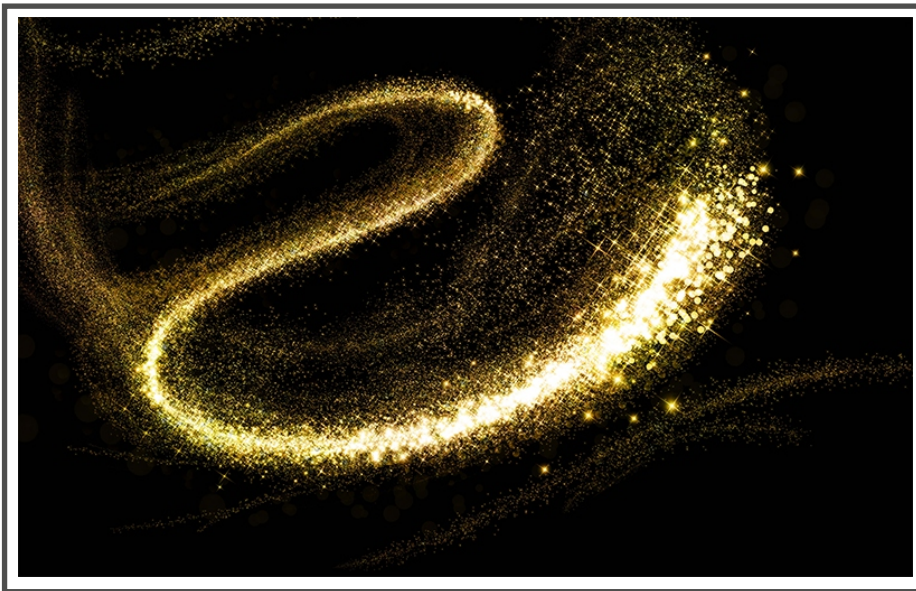
Roller



Product Code: -Texture-27A
9' (W) x 10' (H) | 108" x 120" = 90.0 SQF



Product Code: Texture-27B
5' (W) x 8' (H) | 60" x 96" = 40.0 SQF



Product Code: Texture-27C
8' (W) x 5' (H) | 96" x 60" = 40.0 SQF

Application for (Blinds):



Roman

Panel

Combi

Roller



Product Code: -Texture-28A
9' (W) x 10' (H) | 108" x 120" = 90.0 SQF



Product Code: Texture-28B
5' (W) x 8' (H) | 60" x 96" = 40.0 SQF



Product Code: Texture-28C
8' (W) x 5' (H) | 96" x 60" = 40.0 SQF

Application for (Blinds):



Roman

Panel

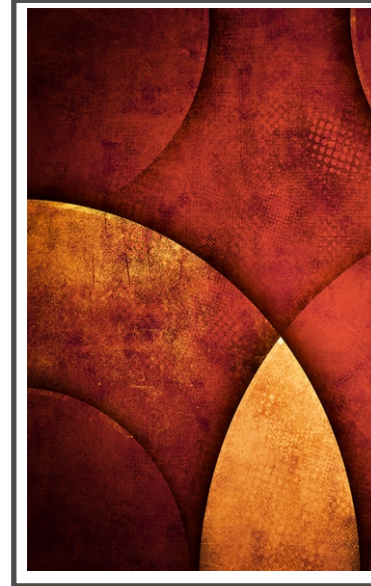
Combi

Roller





Product Code: -Texture-29A
9' (W) x 10' (H) | 108" x 120" = 90.0 SQF



Product Code: Texture-29B
5' (W) x 8' (H) | 60" x 96" = 40.0 SQF



Product Code: Texture-29C
8' (W) x 5' (H) | 96" x 60" = 40.0 SQF

Application for (Blinds):



Roman

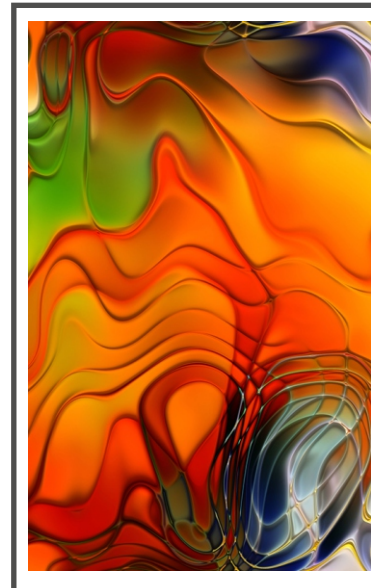
Panel

Combi

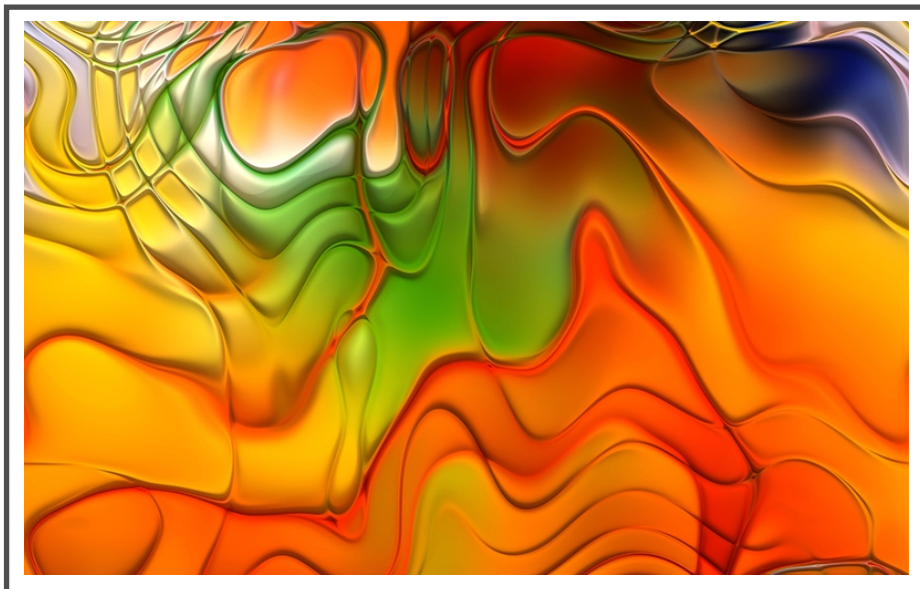
Roller



Product Code: -Texture-30A
9' (W) x 10' (H) | 108" x 120" = 90.0 SQF



Product Code: Texture-30B
5' (W) x 8' (H) | 60" x 96" = 40.0 SQF



Product Code: Texture-30C
8' (W) x 5' (H) | 96" x 60" = 40.0 SQF

Application for (Blinds):



Roman

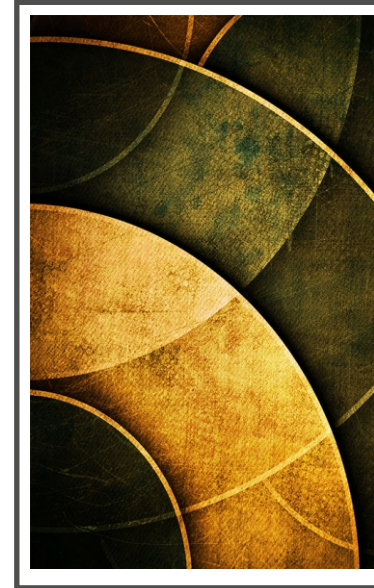
Panel

Combi

Roller



Product Code: -Texture-31A
9' (W) x 10' (H) | 108" x 120" = 90.0 SQF



Product Code: Texture-31B
5' (W) x 8' (H) | 60" x 96" = 40.0 SQF



Product Code: Texture-31C
8' (W) x 5' (H) | 96" x 60" = 40.0 SQF

Application for (Blinds):



Roman

Panel

Combi

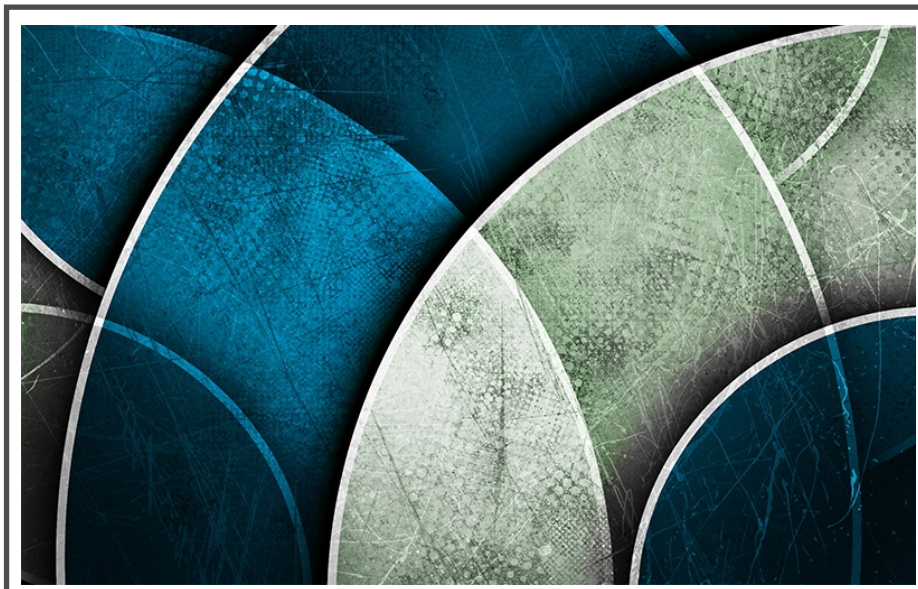
Roller



Product Code: -Texture-32A
9' (W) x 10' (H) | 108" x 120" = 90.0 SQF



Product Code: Texture-32B
5' (W) x 8' (H) | 60" x 96" = 40.0 SQF



Product Code: Texture-32C
8' (W) x 5' (H) | 96" x 60" = 40.0 SQF

Application for (Blinds):



Roman

Panel

Combi

Roller





Product Code: -Texture-33A
9' (W) x 10' (H) | 108" x 120" = 90.0 SQF



Product Code: Texture-33B
5' (W) x 8' (H) | 60" x 96" = 40.0 SQF



Product Code: Texture-33C
8' (W) x 5' (H) | 96" x 60" = 40.0 SQF

Application for (Blinds):



Roman

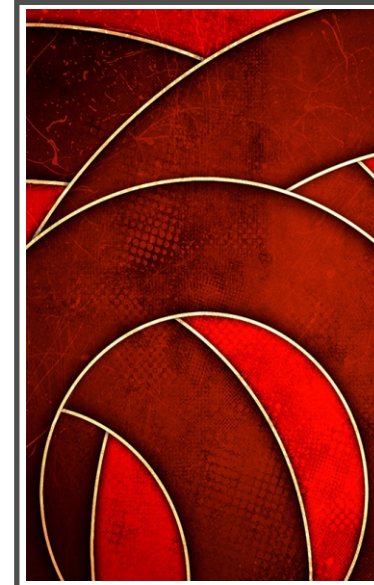
Panel

Combi

Roller



Product Code: -Texture-34A
9' (W) x 10' (H) | 108" x 120" = 90.0 SQF



Product Code: Texture-34B
5' (W) x 8' (H) | 60" x 96" = 40.0 SQF



Product Code: Texture-34C
8' (W) x 5' (H) | 96" x 60" = 40.0 SQF

Application for (Blinds):



Roman

Panel

Combi

Roller



Product Code: -Texture-35A
9' (W) x 10' (H) | 108" x 120" = 90.0 SQF



Product Code: Texture-35B
5' (W) x 8' (H) | 60" x 96" = 40.0 SQF



Product Code: Texture-35C
8' (W) x 5' (H) | 96" x 60" = 40.0 SQF

Application for (Blinds):

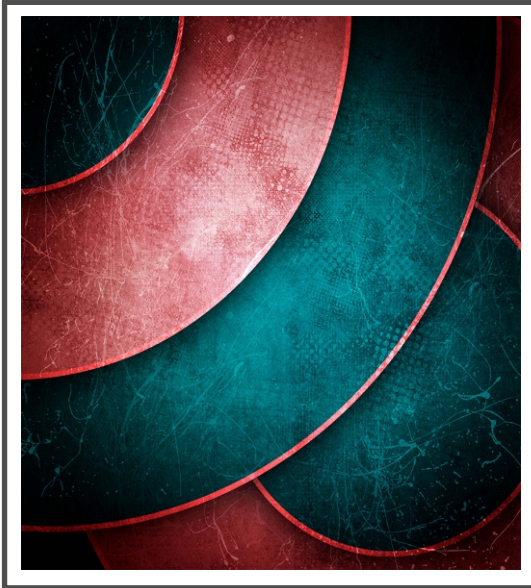


Roman

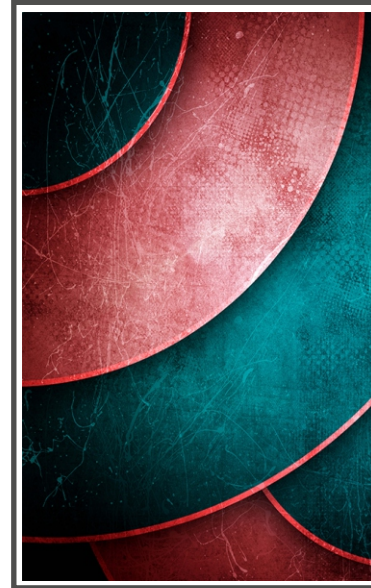
Panel

Combi

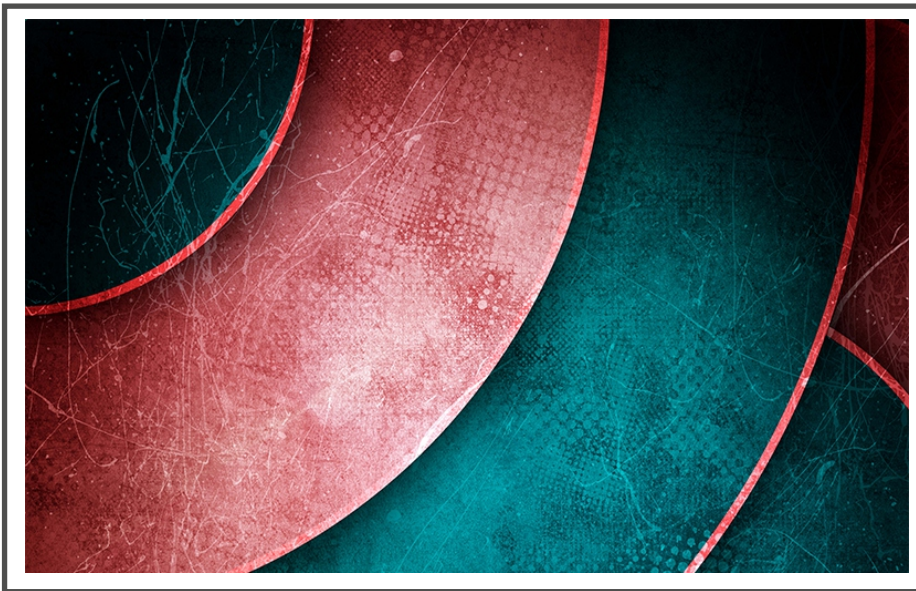
Roller



Product Code: -Texture-36A
9' (W) x 10' (H) | 108" x 120" = 90.0 SQF



Product Code: Texture-36B
5' (W) x 8' (H) | 60" x 96" = 40.0 SQF



Product Code: Texture-36C
8' (W) x 5' (H) | 96" x 60" = 40.0 SQF

Application for (Blinds):

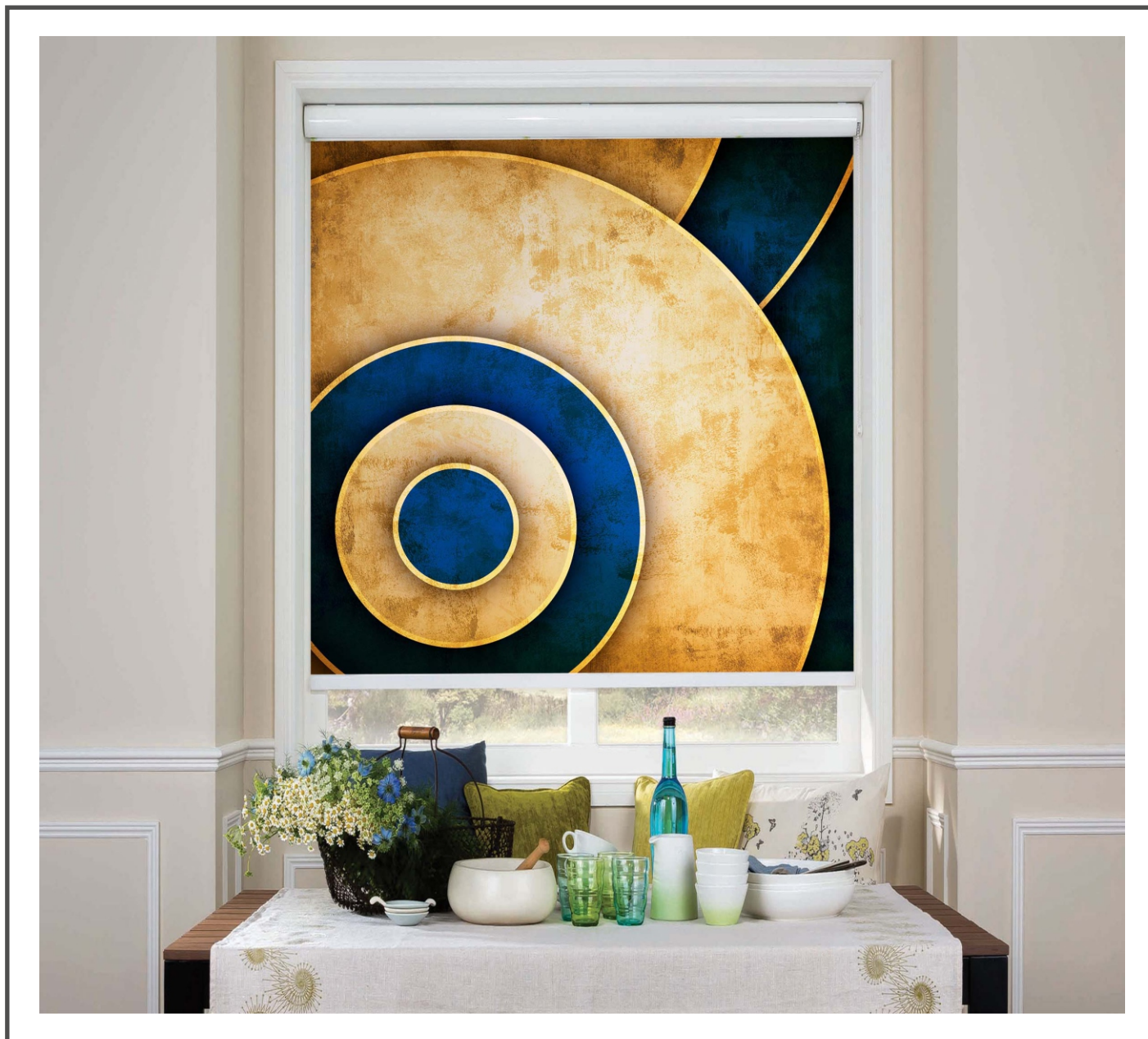


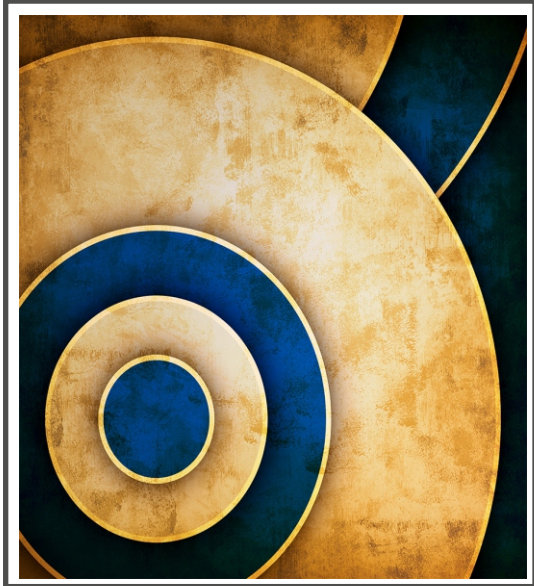
Roman

Panel

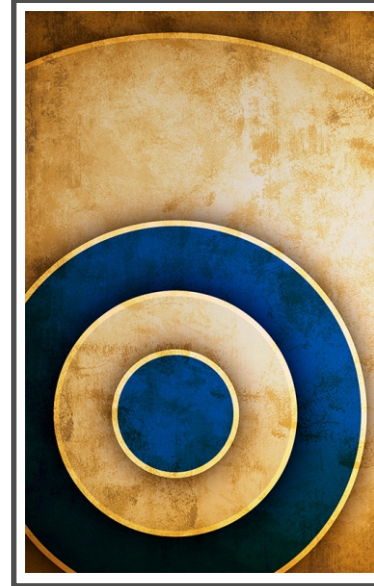
Combi

Roller





Product Code: -Texture-37A
9' (W) x 10' (H) | 108" x 120" = 90.0 SQF



Product Code: Texture-37B
5' (W) x 8' (H) | 60" x 96" = 40.0 SQF



Product Code: Texture-37C
8' (W) x 5' (H) | 96" x 60" = 40.0 SQF

Application for (Blinds):

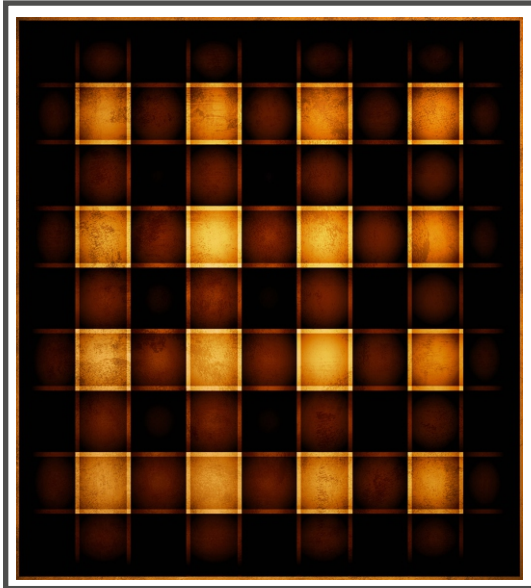


Roman

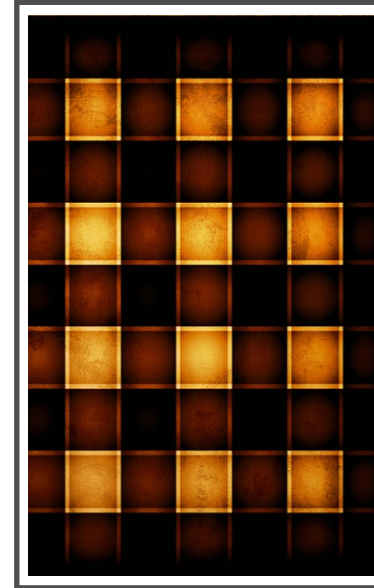
Panel

Combi

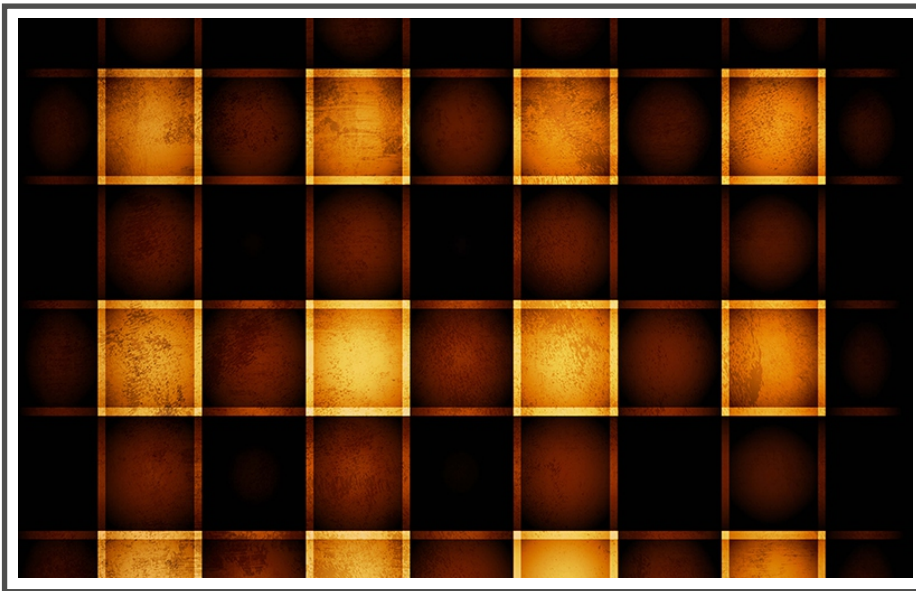
Roller



Product Code: -Texture-38A
9' (W) x 10' (H) | 108" x 120" = 90.0 SQF



Product Code: Texture-38B
5' (W) x 8' (H) | 60" x 96" = 40.0 SQF



Product Code: Texture-38C
8' (W) x 5' (H) | 96" x 60" = 40.0 SQF

Application for (Blinds):



Roman

Panel

Combi

Roller



Product Code: -Texture-39A
9' (W) x 10' (H) | 108" x 120" = 90.0 SQF



Product Code: Texture-39B
5' (W) x 8' (H) | 60" x 96" = 40.0 SQF



Product Code: Texture-39C
8' (W) x 5' (H) | 96" x 60" = 40.0 SQF

Application for (Blinds):



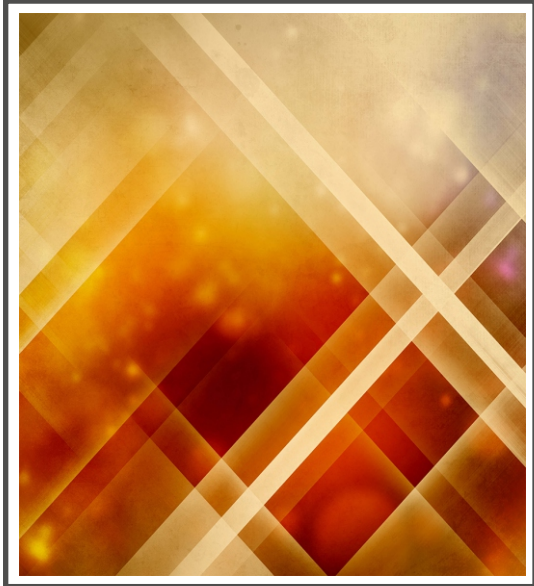
Roman

Panel

Combi

Roller





Product Code: -Texture-40A
9' (W) x 10' (H) | 108" x 120" = 90.0 SQF



Product Code: Texture-40B
5' (W) x 8' (H) | 60" x 96" = 40.0 SQF



Product Code: Texture-40C
8' (W) x 5' (H) | 96" x 60" = 40.0 SQF

Application for (Blinds):



Roman

Panel

Combi

Roller