

Product Code: Nature-01A
9' (W) x 10' (H) | 108" x 120" = 90.0 SQF



Product Code: Nature-01B
5' (W) x 8' (H) | 60" x 96" = 40.0 SQF



Product Code: Nature-01C
8' (W) x 5' (H) | 96" x 60" = 40.0 SQF

Application for (Blinds):



Roman

Panel

Combi

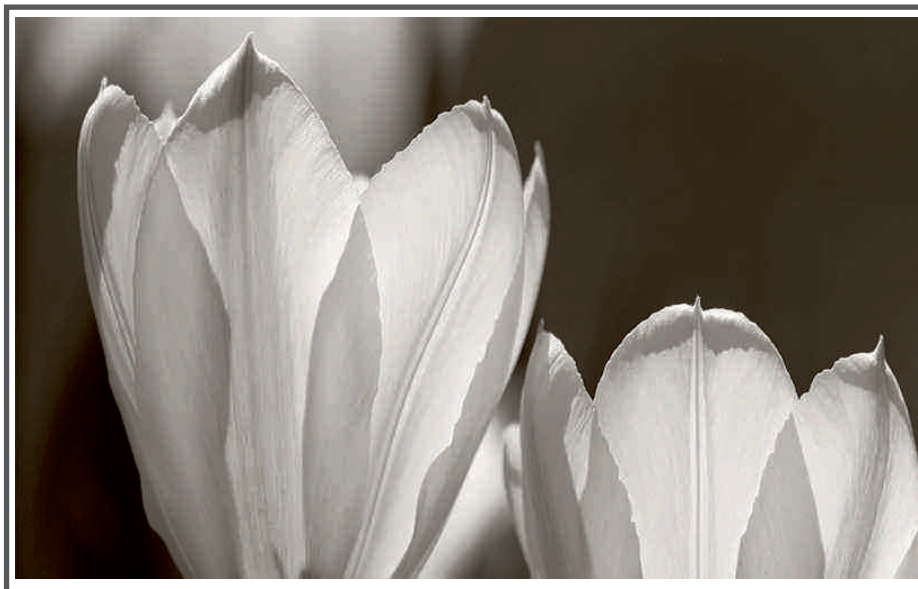
Roller



Product Code: Nature-02A
9' (W) x 10' (H) | 108" x 120" = 90.0 SQF



Product Code: Nature-02B
5' (W) x 8' (H) | 60" x 96" = 40.0 SQF



Product Code: Nature-02C
8' (W) x 5' (H) | 96" x 60" = 40.0 SQF

Application for (Blinds):



Roman

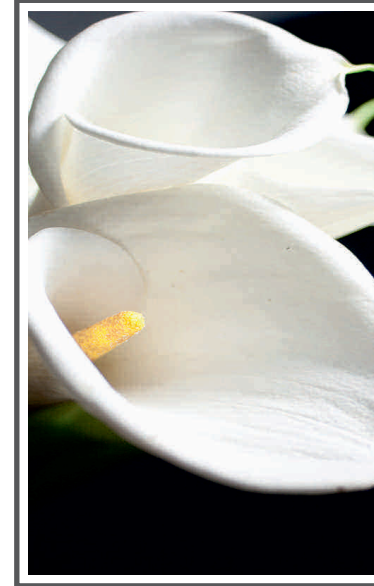
Panel

Combi

Roller



Product Code: Nature-03A
9' (W) x 10' (H) | 108" x 120" = 90.0 SQF



Product Code: Nature-03B
5' (W) x 8' (H) | 60" x 96" = 40.0 SQF



Product Code: Nature-03C
8' (W) x 5' (H) | 96" x 60" = 40.0 SQF

Application for (Blinds):



Roman

Panel

Combi

Roller



Product Code: Nature-04A
9' (W) x 10' (H) | 108" x 120" = 90.0 SQF



Product Code: Nature-04B
5' (W) x 8' (H) | 60" x 96" = 40.0 SQF



Product Code: Nature-04C
8' (W) x 5' (H) | 96" x 60" = 40.0 SQF

Application for (Blinds):



Roman

Panel

Combi

Roller





Product Code: Nature-05A
9' (W) x 10' (H) | 108" x 120" = 90.0 SQF



Product Code: Nature-05B
5' (W) x 8' (H) | 60" x 96" = 40.0 SQF



Product Code: Nature-05C
8' (W) x 5' (H) | 96" x 60" = 40.0 SQF

Application for (Blinds):



Roman

Panel

Combi

Roller



Product Code: Nature-06A
9' (W) x 10' (H) | 108" x 120" = 90.0 SQF



Product Code: Nature-06B
5' (W) x 8' (H) | 60" x 96" = 40.0 SQF



Product Code: Nature-06C
8' (W) x 5' (H) | 96" x 60" = 40.0 SQF

Application for (Blinds):

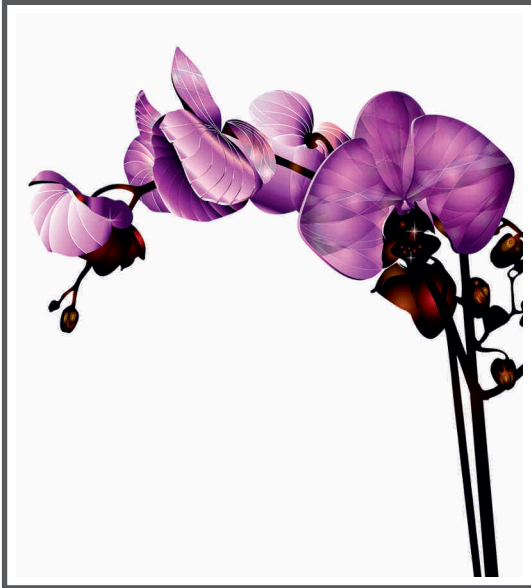


Roman

Panel

Combi

Roller



Product Code: Nature-07A
9' (W) x 10' (H) | 108" x 120" = 90.0 SQF



Product Code: Nature-07B
5' (W) x 8' (H) | 60" x 96" = 40.0 SQF



Product Code: Nature-07C
8' (W) x 5' (H) | 96" x 60" = 40.0 SQF

Application for (Blinds):



Roman

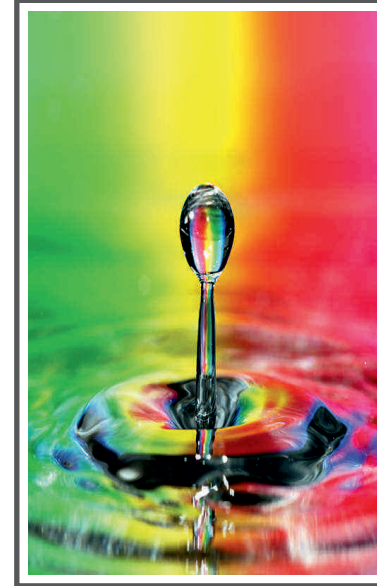
Panel

Combi

Roller



Product Code: Nature-08A
 9' (W) x 10' (H) | 108" x 120" = 90.0 SQF



Product Code: Nature-08B
 5' (W) x 8' (H) | 60" x 96" = 40.0 SQF



Product Code: Nature-08C
 8' (W) x 5' (H) | 96" x 60" = 40.0 SQF

Application for (Blinds):



Roman

Panel

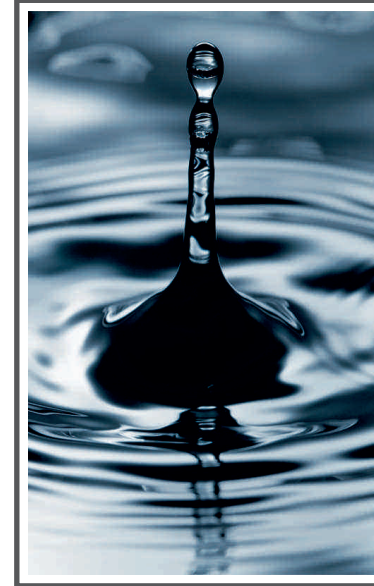
Combi

Roller





Product Code: Nature-09A
9' (W) x 10' (H) | 108" x 120" = 90.0 SQF



Product Code: Nature-09B
5' (W) x 8' (H) | 60" x 96" = 40.0 SQF



Product Code: Nature-09C
8' (W) x 5' (H) | 96" x 60" = 40.0 SQF

Application for (Blinds):



Roman

Panel

Combi

Roller



Product Code: Nature-10A
9' (W) x 10' (H) | 108" x 120" = 90.0 SQF



Product Code: Nature-10B
5' (W) x 8' (H) | 60" x 96" = 40.0 SQF



Product Code: Nature-10C
8' (W) x 5' (H) | 96" x 60" = 40.0 SQF

Application for (Blinds):

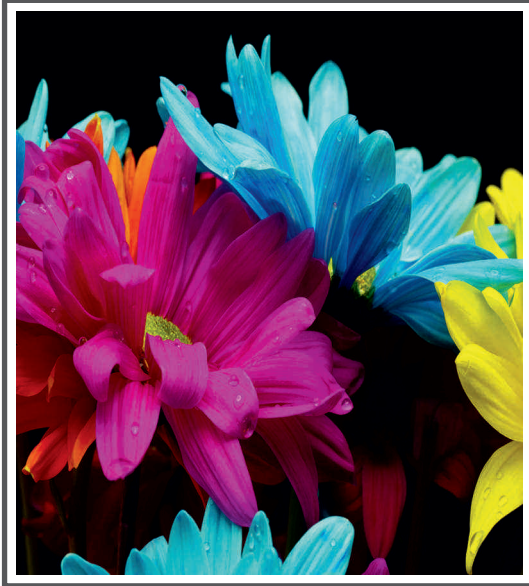


Roman

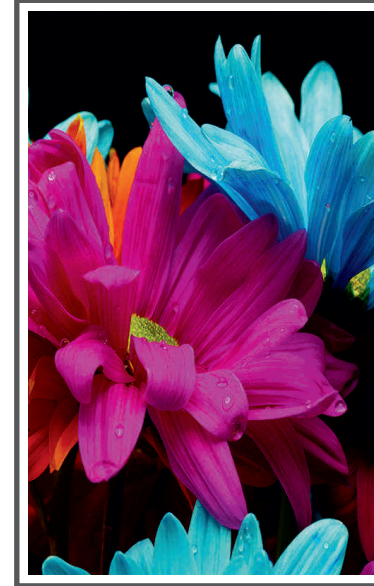
Panel

Combi

Roller



Product Code: Nature-11A
9' (W) x 10' (H) | 108" x 120" = 90.0 SQF



Product Code: Nature-11B
5' (W) x 8' (H) | 60" x 96" = 40.0 SQF



Product Code: Nature-11C
8' (W) x 5' (H) | 96" x 60" = 40.0 SQF

Application for (Blinds):

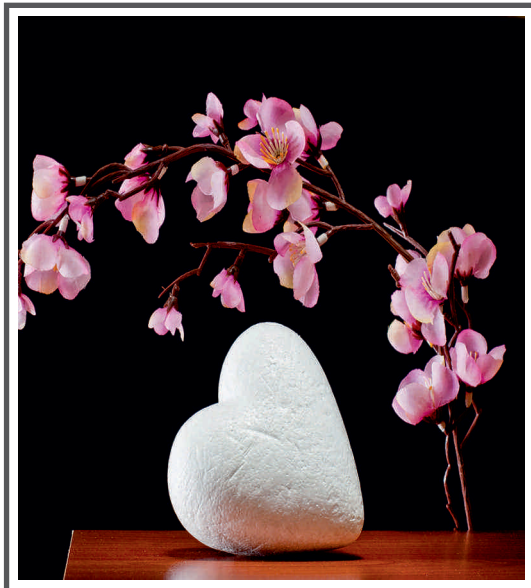


Roman

Panel

Combi

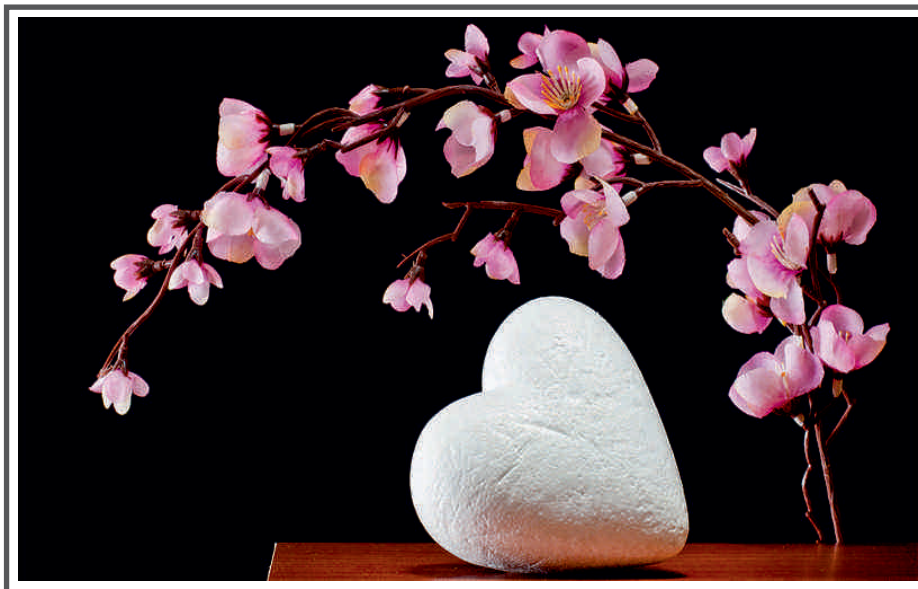
Roller



Product Code: Nature-12A
9' (W) x 10' (H) | 108" x 120" = 90.0 SQF



Product Code: Nature-12B
5' (W) x 8' (H) | 60" x 96" = 40.0 SQF



Product Code: Nature-12C
8' (W) x 5' (H) | 96" x 60" = 40.0 SQF

Application for (Blinds):



Roman

Panel

Combi

Roller





Product Code: Nature-13A
 9' (W) x 10' (H) | 108" x 120" = 90.0 SQF



Product Code: Nature-13B
 5' (W) x 8' (H) | 60" x 96" = 40.0 SQF



Product Code: Nature-13C
 8' (W) x 5' (H) | 96" x 60" = 40.0 SQF

Application for (Blinds):

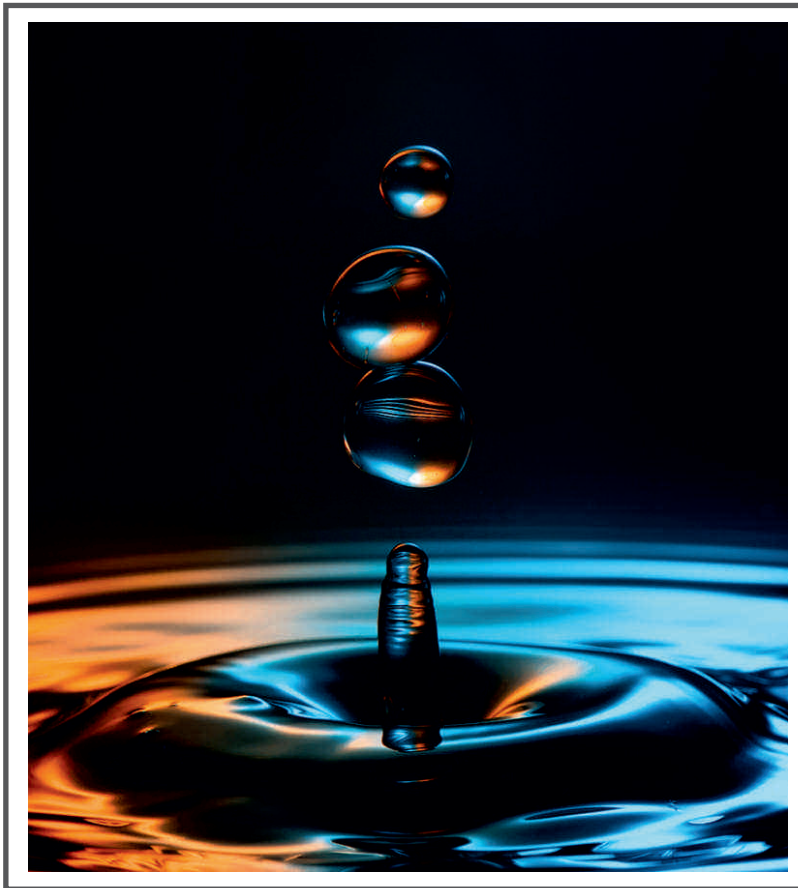


Roman

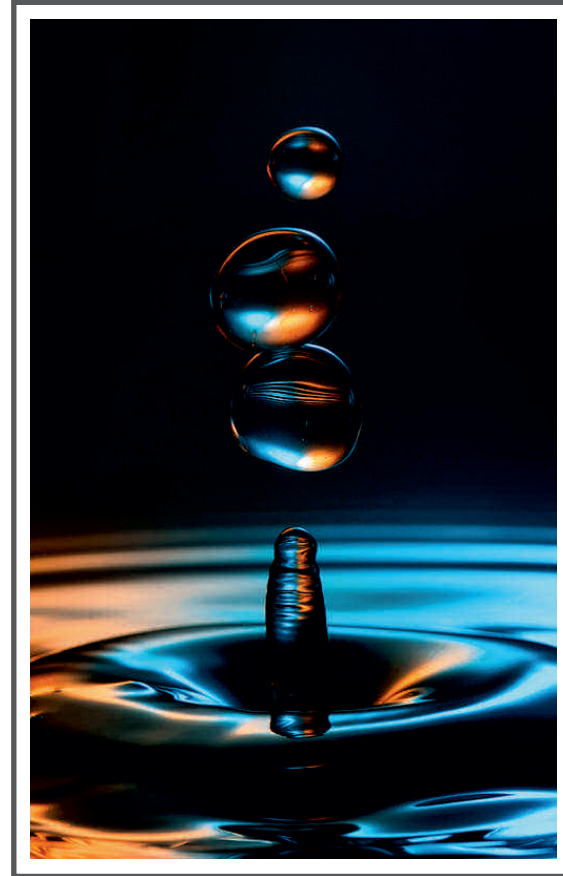
Panel

Combi

Roller



Product Code: Nature-14A
9' (W) x 10' (H) | 108" x 120" = 90.0 SQF



Product Code: Nature-14B
5' (W) x 8' (H) | 60" x 96" = 40.0 SQF

Application for (Blinds):

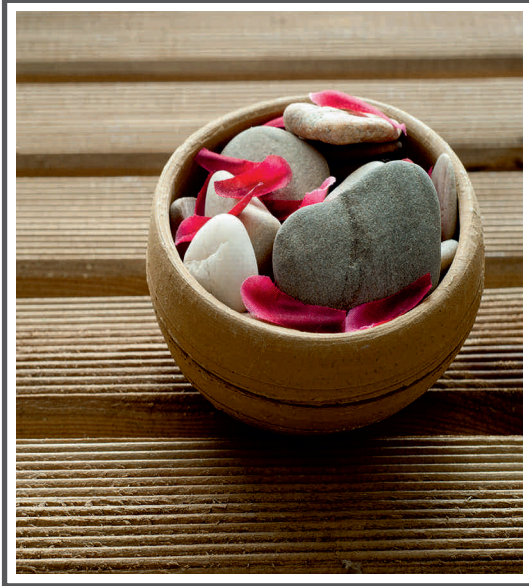


Roman

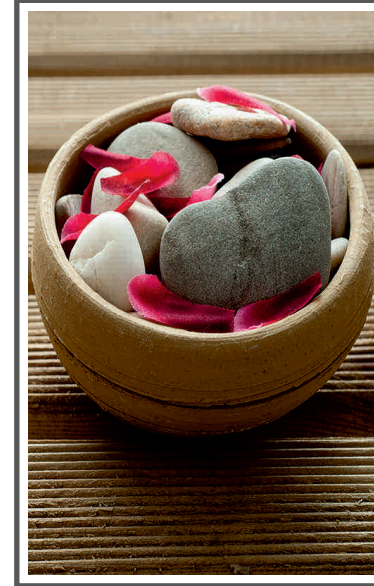
Panel

Combi

Roller



Product Code: Nature-15A
9' (W) x 10' (H) | 108" x 120" = 90.0 SQF



Product Code: Nature-15B
5' (W) x 8' (H) | 60" x 96" = 40.0 SQF



Product Code: Nature-15C
8' (W) x 5' (H) | 96" x 60" = 40.0 SQF

Application for (Blinds):

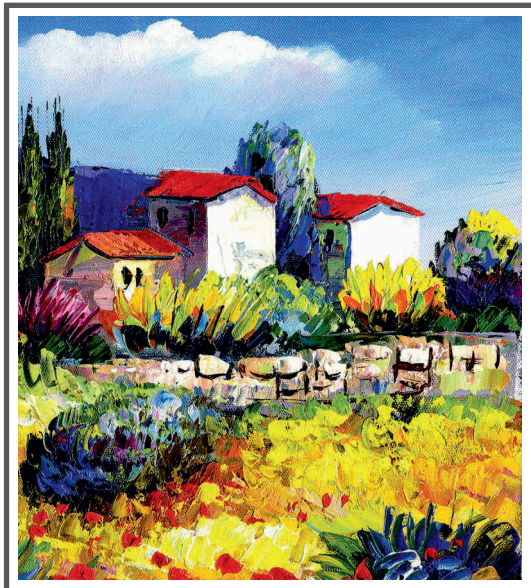


Roman

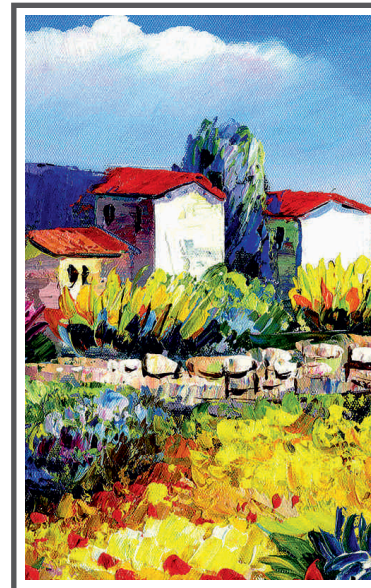
Panel

Combi

Roller



Product Code: Nature-16A
9' (W) x 10' (H) | 108" x 120" = 90.0 SQF



Product Code: Nature-16B
5' (W) x 8' (H) | 60" x 96" = 40.0 SQF



Product Code: Nature-16C
8' (W) x 5' (H) | 96" x 60" = 40.0 SQF

Application for (Blinds):



Roman

Panel

Combi

Roller





Product Code: Nature-17A
9' (W) x 10' (H) | 108" x 120" = 90.0 SQF



Product Code: Nature-17B
5' (W) x 8' (H) | 60" x 96" = 40.0 SQF



Product Code: Nature-17C
8' (W) x 5' (H) | 96" x 60" = 40.0 SQF

Application for (Blinds):

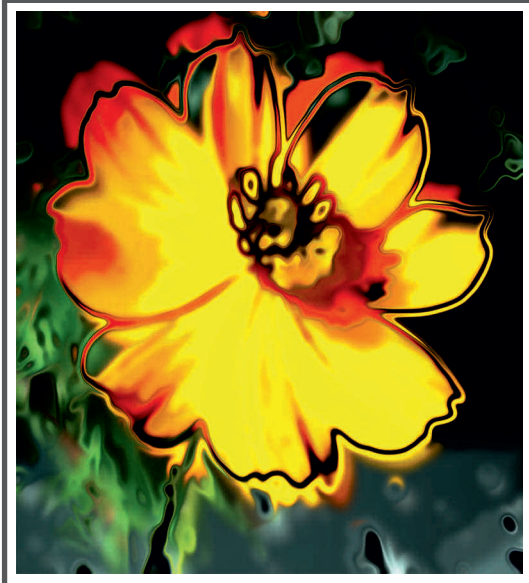


Roman

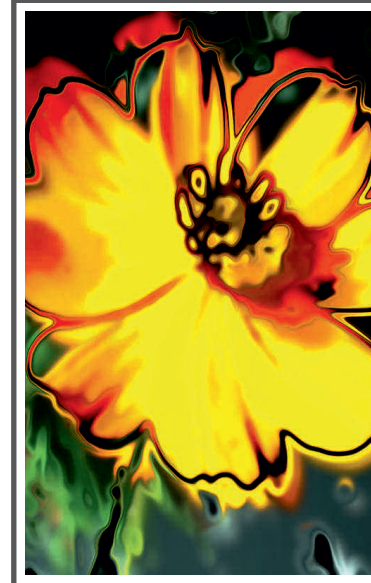
Panel

Combi

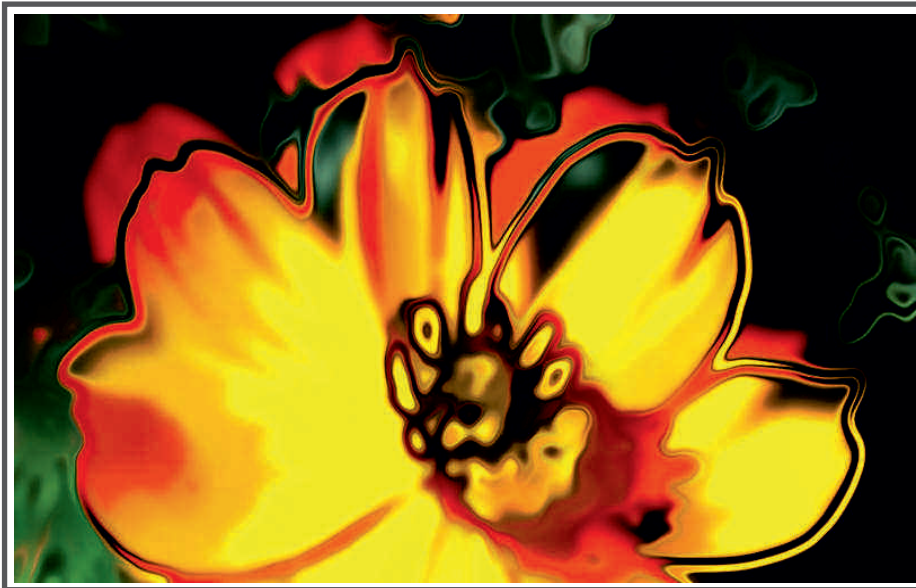
Roller



Product Code: Nature-18A
9' (W) x 10' (H) | 108" x 120" = 90.0 SQF



Product Code: Nature-18B
5' (W) x 8' (H) | 60" x 96" = 40.0 SQF



Product Code: Nature-18C
8' (W) x 5' (H) | 96" x 60" = 40.0 SQF

Application for (Blinds):



Roman

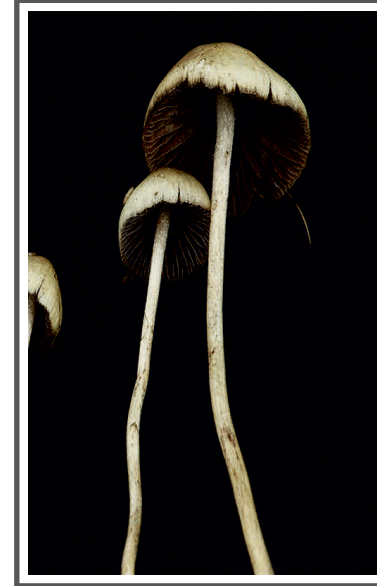
Panel

Combi

Roller



Product Code: Nature-19A
9' (W) x 10' (H) | 108" x 120" = 90.0 SQF



Product Code: Nature-19B
5' (W) x 8' (H) | 60" x 96" = 40.0 SQF



Product Code: Nature-19C
8' (W) x 5' (H) | 96" x 60" = 40.0 SQF

Application for (Blinds):

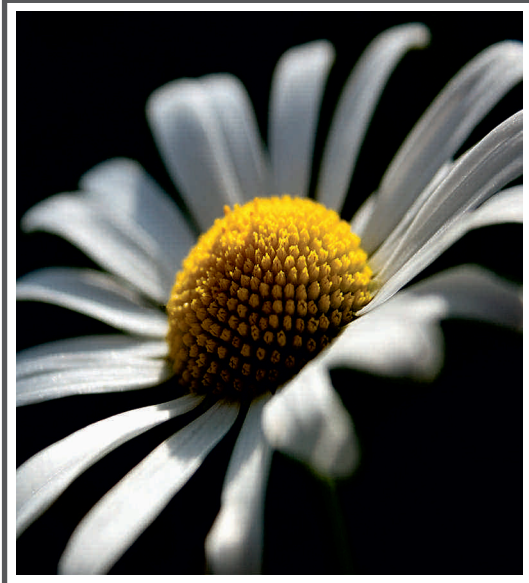


Roman

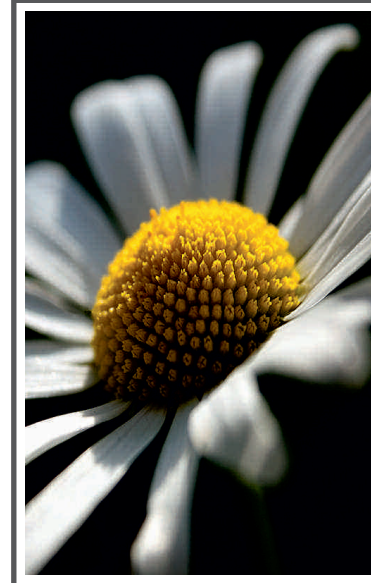
Panel

Combi

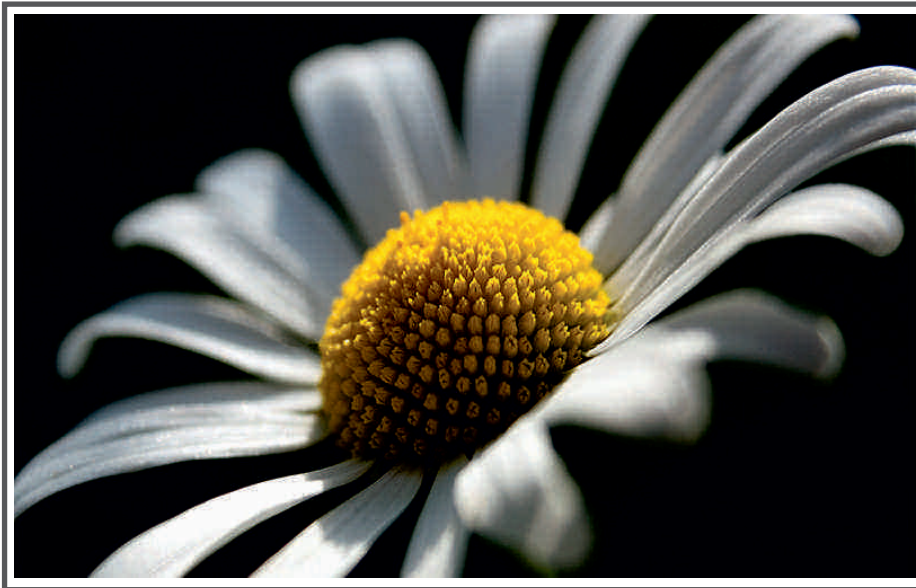
Roller



Product Code: Nature- 20A
9' (W) x 10' (H) | 108" x 120" = 90.0 SQF



Product Code: Nature- 20B
5' (W) x 8' (H) | 60" x 96" = 40.0 SQF



Product Code: Nature- 20C
8' (W) x 5' (H) | 96" x 60" = 40.0 SQF

Application for (Blinds):



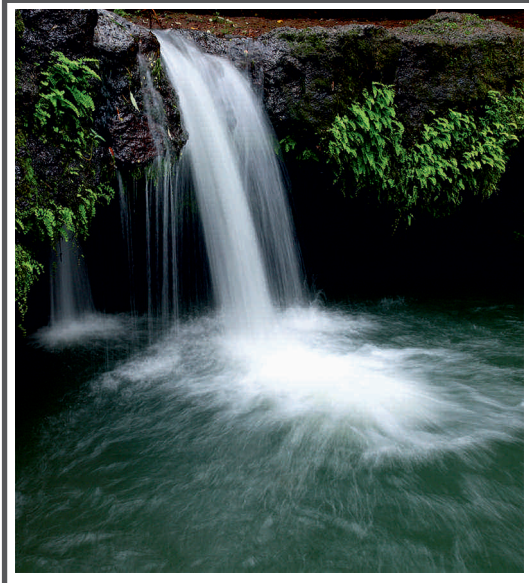
Roman

Panel

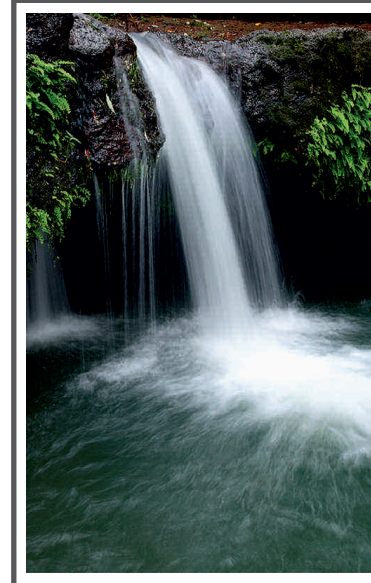
Combi

Roller





Product Code: Nature- 21A
9' (W) x 10' (H) | 108" x 120" = 90.0 SQF



Product Code: Nature- 21B
5' (W) x 8' (H) | 60" x 96" = 40.0 SQF



Product Code: Nature- 21C
8' (W) x 5' (H) | 96" x 60" = 40.0 SQF

Application for (Blinds):



Roman

Panel

Combi

Roller



Product Code: Nature- 22A
9' (W) x 10' (H) | 108" x 120" = 90.0 SQF



Product Code: Nature- 22B
5' (W) x 8' (H) | 60" x 96" = 40.0 SQF



Product Code: Nature- 22C
8' (W) x 5' (H) | 96" x 60" = 40.0 SQF

Application for (Blinds):

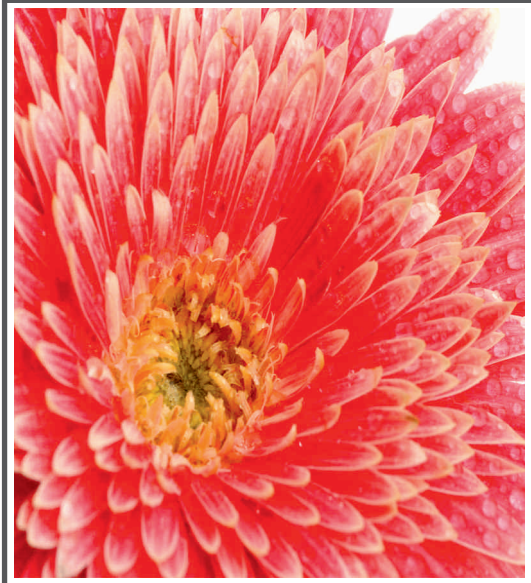


Roman

Panel

Combi

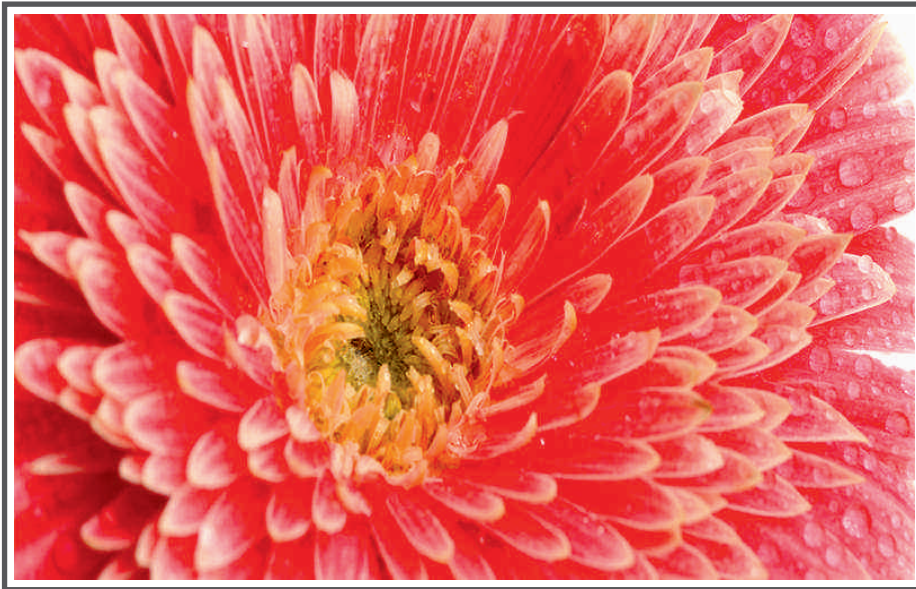
Roller



Product Code: Nature- 23A
9' (W) x 10' (H) | 108" x 120" = 90.0 SQF



Product Code: Nature- 22B
5' (W) x 8' (H) | 60" x 96" = 40.0 SQF



Product Code: Nature- 23C
8' (W) x 5' (H) | 96" x 60" = 40.0 SQF

Application for (Blinds):



Roman

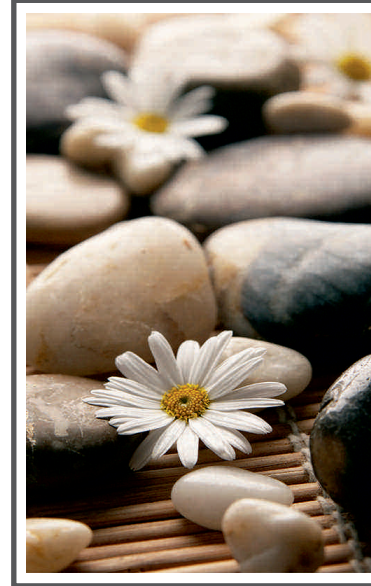
Panel

Combi

Roller



Product Code: Nature- 24A
9' (W) x 10' (H) | 108" x 120" = 90.0 SQF



Product Code: Nature- 24B
5' (W) x 8' (H) | 60" x 96" = 40.0 SQF



Product Code: Nature- 24C
8' (W) x 5' (H) | 96" x 60" = 40.0 SQF

Application for (Blinds):



Roman



Panel

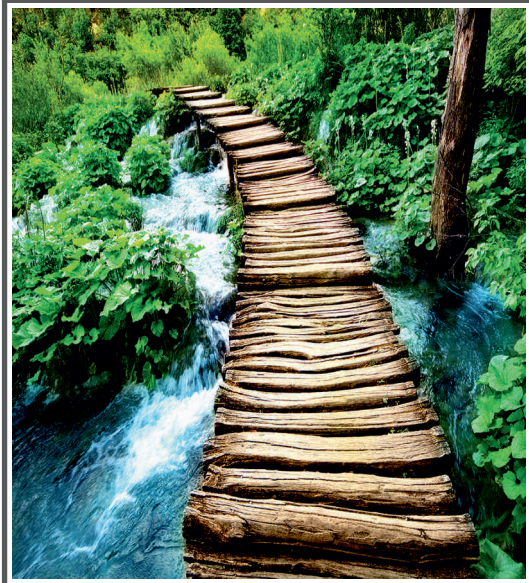


Combi



Roller





Product Code: Nature- 25A
9' (W) x 10' (H) | 108" x 120" = 90.0 SQF



Product Code: Nature- 25B
5' (W) x 8' (H) | 60" x 96" = 40.0 SQF



Product Code: Nature- 25C
8' (W) x 5' (H) | 96" x 60" = 40.0 SQF

Application for (Blinds):



Roman

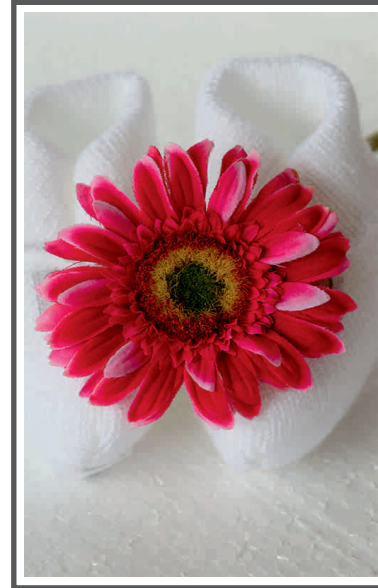
Panel

Combi

Roller



Product Code: Nature-26A
9' (W) x 10' (H) | 108" x 120" = 90.0 SQF



Product Code: Nature-26B
5' (W) x 8' (H) | 60" x 96" = 40.0 SQF



Product Code: Nature-26C
8' (W) x 5' (H) | 96" x 60" = 40.0 SQF

Application for (Blinds):



Roman

Panel

Combi

Roller



Product Code: Nature-27A
9' (W) x 10' (H) | 108" x 120" = 90.0 SQF



Product Code: Nature-27B
5' (W) x 8' (H) | 60" x 96" = 40.0 SQF



Product Code: Nature-27C
8' (W) x 5' (H) | 96" x 60" = 40.0 SQF

Application for (Blinds):



Roman

Panel

Combi

Roller



Product Code: Nature-28A
 9' (W) x 10' (H) | 108" x 120" = 90.0 SQF



Product Code: Nature-28B
 5' (W) x 8' (H) | 60" x 96" = 40.0 SQF



Product Code: Nature-28C
 8' (W) x 5' (H) | 96" x 60" = 40.0 SQF

Application for (Blinds):



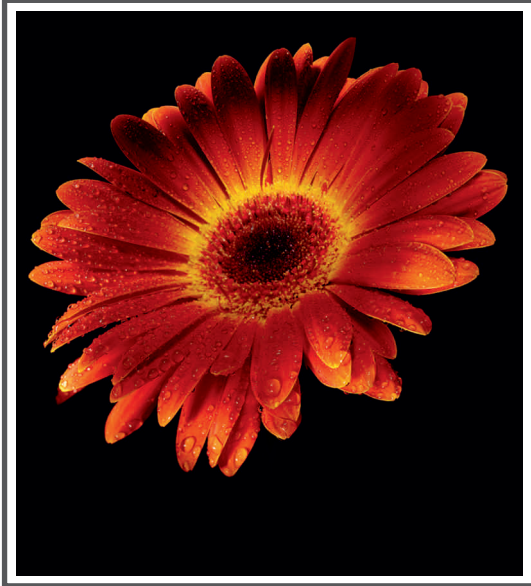
Roman

Panel

Combi

Roller





Product Code: Nature-29A
9' (W) x 10' (H) | 108" x 120" = 90.0 SQF



Product Code: Nature-29B
5' (W) x 8' (H) | 60" x 96" = 40.0 SQF



Product Code: Nature-29C
8' (W) x 5' (H) | 96" x 60" = 40.0 SQF

Application for (Blinds):



Roman

Panel

Combi

Roller



Product Code: Nature-30A
 9' (W) x 10' (H) | 108" x 120" = 90.0 SQF



Product Code: Nature-30B
 5' (W) x 8' (H) | 60" x 96" = 40.0 SQF



Product Code: Nature-30C
 8' (W) x 5' (H) | 96" x 60" = 40.0 SQF

Application for (Blinds):



Roman

Panel

Combi

Roller



Product Code: Nature-31A
 9' (W) x 10' (H) | 108" x 120" = 90.0 SQF



Product Code: Nature-31B
 5' (W) x 8' (H) | 60" x 96" = 40.0 SQF



Product Code: Nature-31C
 8' (W) x 5' (H) | 96" x 60" = 40.0 SQF

Application for (Blinds):

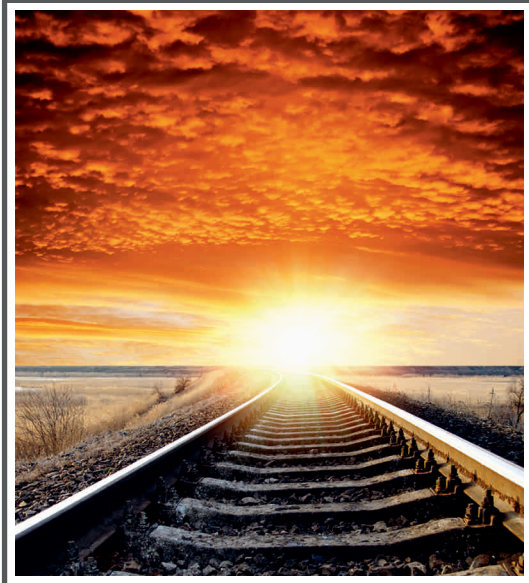


Roman

Panel

Combi

Roller



Product Code: Nature-32A
9' (W) x 10' (H) | 108" x 120" = 90.0 SQF



Product Code: Nature-32B
5' (W) x 8' (H) | 60" x 96" = 40.0 SQF



Product Code: Nature-32C
8' (W) x 5' (H) | 96" x 60" = 40.0 SQF

Application for (Blinds):



Roman

Panel

Combi

Roller





Product Code: Nature-33A
9' (W) x 10' (H) | 108" x 120" = 90.0 SQF



Product Code: Nature-33B
5' (W) x 8' (H) | 60" x 96" = 40.0 SQF



Product Code: Nature-33C
8' (W) x 5' (H) | 96" x 60" = 40.0 SQF

Application for (Blinds):

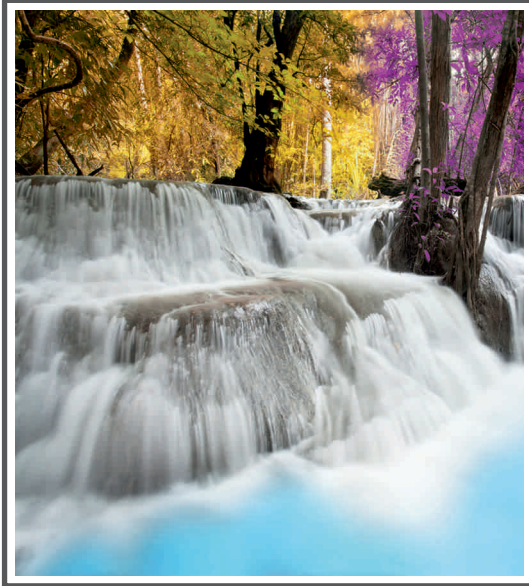


Roman

Panel

Combi

Roller



Product Code: Nature-34A
9' (W) x 10' (H) | 108" x 120" = 90.0 SQF



Product Code: Nature-34B
5' (W) x 8' (H) | 60" x 96" = 40.0 SQF



Product Code: Nature-34C
8' (W) x 5' (H) | 96" x 60" = 40.0 SQF

Application for (Blinds):



Roman

Panel

Combi

Roller



Product Code: Nature-35A
9' (W) x 10' (H) | 108" x 120" = 90.0 SQF



Product Code: Nature-35B
5' (W) x 8' (H) | 60" x 96" = 40.0 SQF



Product Code: Nature-35C
8' (W) x 5' (H) | 96" x 60" = 40.0 SQF

Application for (Blinds):



Roman

Panel

Combi

Roller



Product Code: Nature-36A
9' (W) x 10' (H) | 108" x 120" = 90.0 SQF



Product Code: Nature-36B
5' (W) x 8' (H) | 60" x 96" = 40.0 SQF



Product Code: Nature-36C
8' (W) x 5' (H) | 96" x 60" = 40.0 SQF

Application for (Blinds):



Roman

Panel

Combi

Roller





Product Code: Nature-37A
9' (W) x 10' (H) | 108" x 120" = 90.0 SQF



Product Code: Nature-37B
5' (W) x 8' (H) | 60" x 96" = 40.0 SQF



Product Code: Nature-37C
8' (W) x 5' (H) | 96" x 60" = 40.0 SQF

Application for (Blinds):

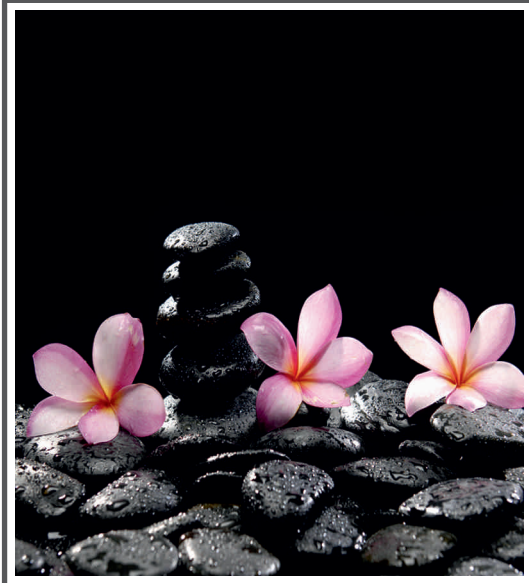


Roman

Panel

Combi

Roller



Product Code: Nature-38A
9' (W) x 10' (H) | 108" x 120" = 90.0 SQF



Product Code: Nature-38B
5' (W) x 8' (H) | 60" x 96" = 40.0 SQF



Product Code: Nature-38C
8' (W) x 5' (H) | 96" x 60" = 40.0 SQF

Application for (Blinds):



Roman

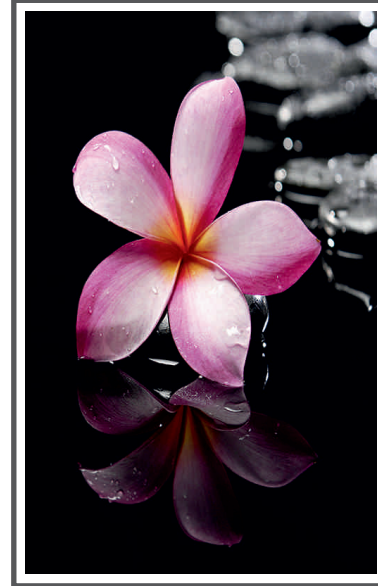
Panel

Combi

Roller



Product Code: Nature-39A
9' (W) x 10' (H) | 108" x 120" = 90.0 SQF



Product Code: Nature-39B
5' (W) x 8' (H) | 60" x 96" = 40.0 SQF



Product Code: Nature-39C
8' (W) x 5' (H) | 96" x 60" = 40.0 SQF

Application for (Blinds):



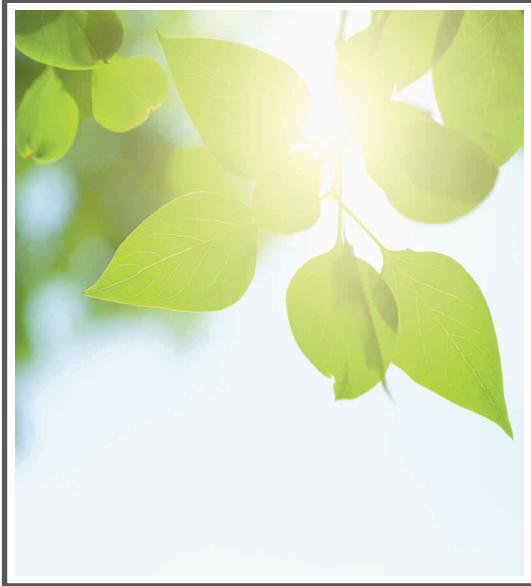
Roman

Panel

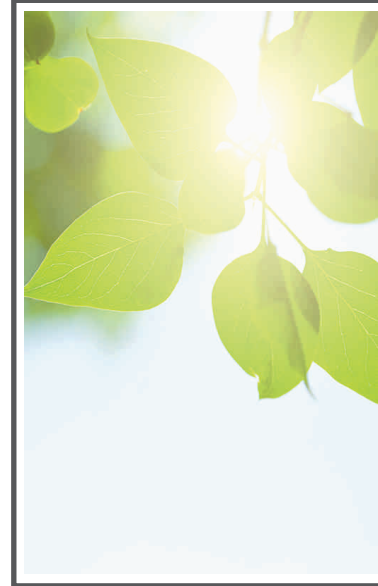
Combi

Roller





Product Code: Nature-40A
9' (W) x 10' (H) | 108" x 120" = 90.0 SQF



Product Code: Nature-40B
5' (W) x 8' (H) | 60" x 96" = 40.0 SQF



Product Code: Nature-40C
8' (W) x 5' (H) | 96" x 60" = 40.0 SQF

Application for (Blinds):



Roman

Panel

Combi

Roller