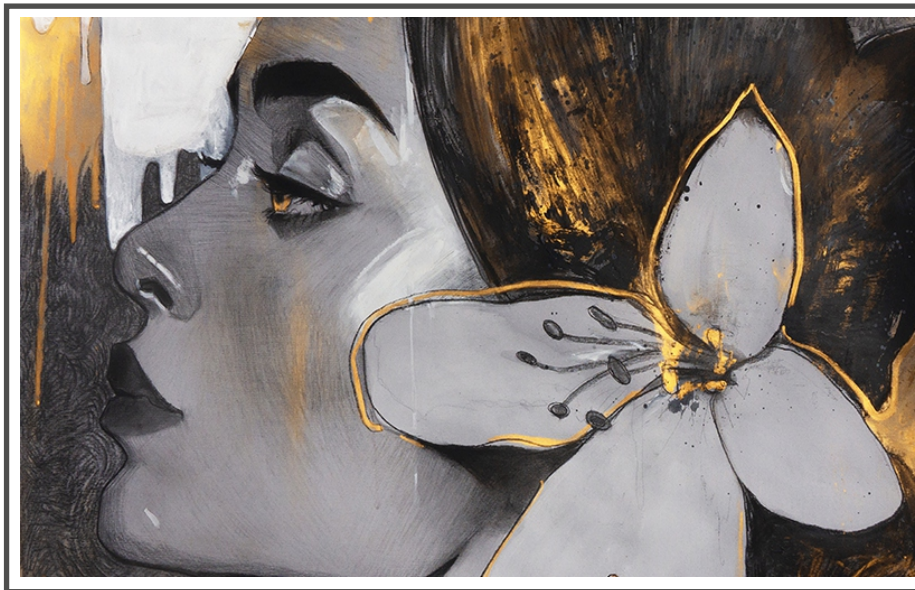




Product Code: -Canvas art-41A
9' (W) x 10' (H) | 108" x 120" = 90.0 SQF



Product Code: Canvas art-41B
5' (W) x 8' (H) | 60" x 96" = 40.0 SQF



Product Code: Canvas art-41C
8' (W) x 5' (H) | 96" x 60" = 40.0 SQF

Application for (Blinds):

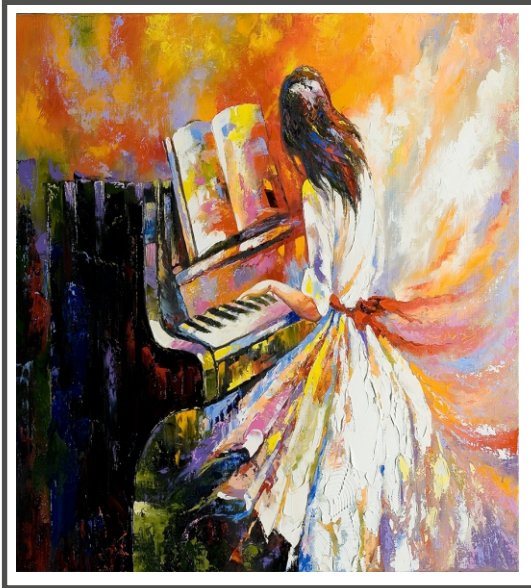


Roman

Panel

Combi

Roller



Product Code: -Canvas art-42A
7' (W) x 8' (H) | 84" x 96" = 56.0 SQF



Product Code: Canvas art-42B
5' (W) x 8' (H) | 60" x 96" = 40.0 SQF



Product Code: Canvas art-42C
8' (W) x 5' (H) | 96" x 60" = 40.0 SQF

Application for (Blinds):

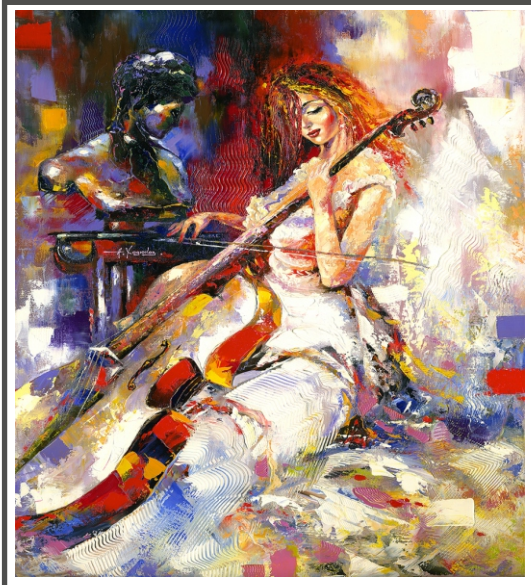


Roman

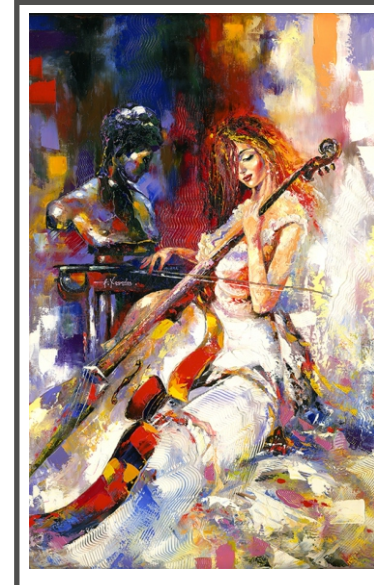
Panel

Combi

Roller



Product Code: -Canvas art-43A
9' (W) x 10' (H) | 108" x 120" = 90.0 SQF



Product Code: Canvas art-43B
5' (W) x 8' (H) | 60" x 96" = 40.0 SQF



Product Code: Canvas art-43C
8' (W) x 5' (H) | 96" x 60" = 40.0 SQF

Application for (Blinds):



Roman

Panel

Combi

Roller



Product Code: -Canvas art-44A
9' (W) x 10' (H) | 108" x 120" = 90.0 SQF



Product Code: Canvas art-44B
5' (W) x 8' (H) | 60" x 96" = 40.0 SQF



Product Code: Canvas art-44C
8' (W) x 5' (H) | 96" x 60" = 40.0 SQF

Application for (Blinds):



Roman

Panel

Combi

Roller





Product Code: -Canvas art-45A
 9' (W) x 10' (H) | 108" x 120" = 90.0 SQF



Product Code: Canvas art-45B
 5' (W) x 8' (H) | 60" x 96" = 40.0 SQF



Product Code: Canvas art-45C
 8' (W) x 5' (H) | 96" x 60" = 40.0 SQF

Application for (Blinds):



Roman

Panel

Combi

Roller



Product Code: -Canvas art-46A
 9' (W) x 10' (H) | 108" x 120" = 90.0 SQF



Product Code: Canvas art-46B
 5' (W) x 8' (H) | 60" x 96" = 40.0 SQF

Application for (Blinds):



Roman

Panel

Combi

Roller



Product Code: -Canvas art-47A
 9' (W) x 10' (H) | 108" x 120" = 90.0 SQF



Product Code: Canvas art-47B
 5' (W) x 8' (H) | 60" x 96" = 40.0 SQF



Product Code: Canvas art-47C
 8' (W) x 5' (H) | 96" x 60" = 40.0 SQF

Application for (Blinds):

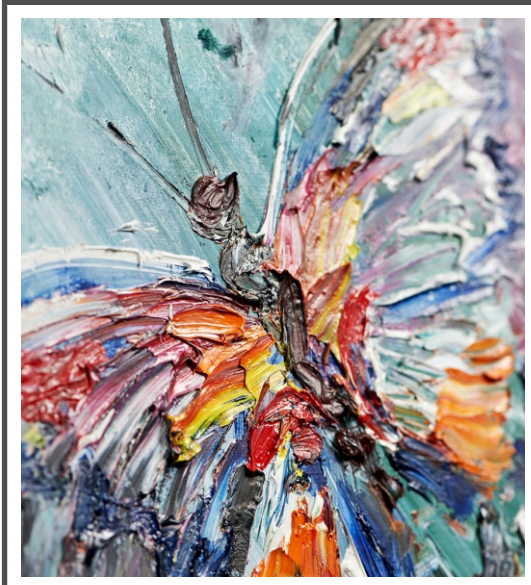


Roman

Panel

Combi

Roller



Product Code: -Canvas art-48A
9' (W) x 10' (H) | 108" x 120" = 90.0 SQF



Product Code: Canvas art-48B
5' (W) x 8' (H) | 60" x 96" = 40.0 SQF



Product Code: Canvas art-48C
8' (W) x 5' (H) | 96" x 60" = 40.0 SQF

Application for (Blinds):



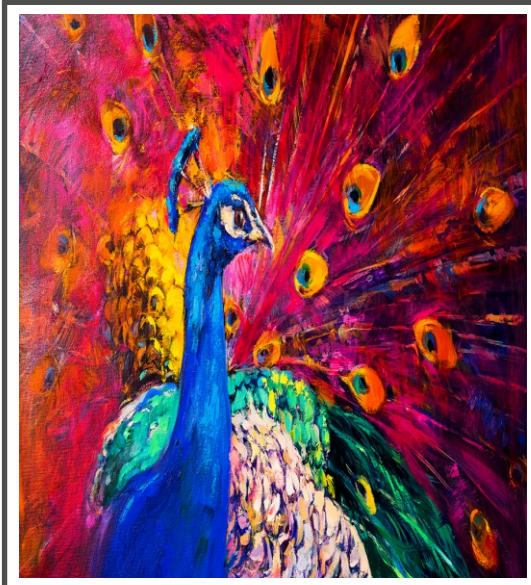
Roman

Panel

Combi

Roller

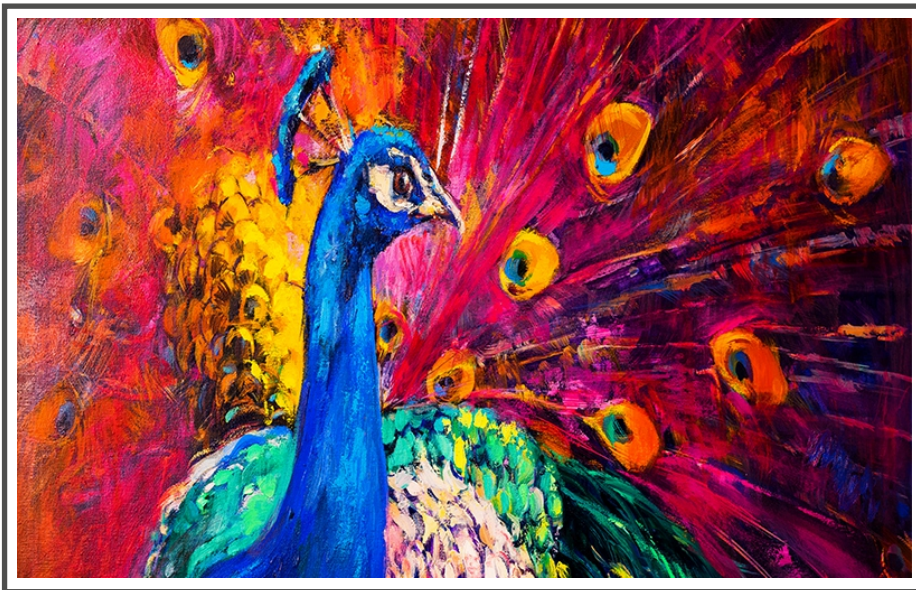




Product Code: -Canvas art-49A
 9' (W) x 10' (H) | 108" x 120" = 90.0 SQF



Product Code: Canvas art-49B
 5' (W) x 8' (H) | 60" x 96" = 40.0 SQF



Product Code: Canvas art-49C
 8' (W) x 5' (H) | 96" x 60" = 40.0 SQF

Application for (Blinds):

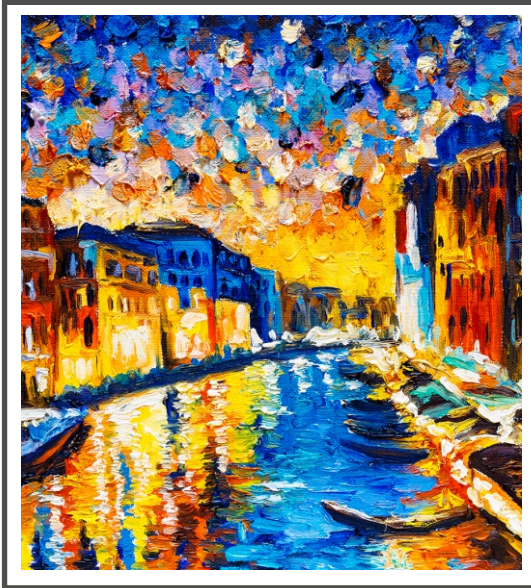


Roman

Panel

Combi

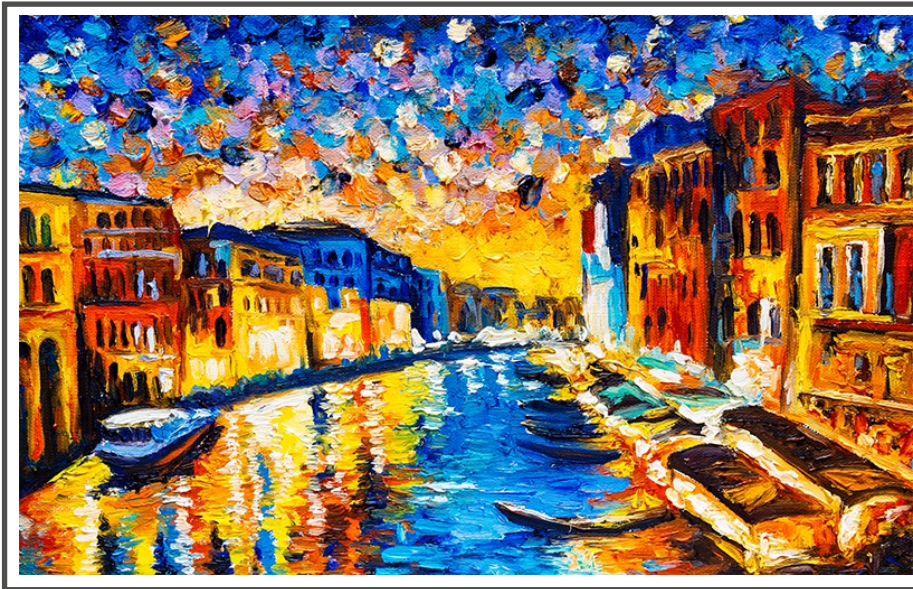
Roller



Product Code: -Canvas art-50A
 9' (W) x 10' (H) | 108" x 120" = 90.0 SQF



Product Code: Canvas art-50B
 5' (W) x 8' (H) | 60" x 96" = 40.0 SQF



Product Code: Canvas art-50C
 8' (W) x 5' (H) | 96" x 60" = 40.0 SQF

Application for (Blinds):



Roman

Panel

Combi

Roller



Product Code: -Canvas art-51A
 9' (W) x 10' (H) | 108" x 120" = 90.0 SQF



Product Code: Canvas art-51B
 5' (W) x 8' (H) | 60" x 96" = 40.0 SQF

Application for (Blinds):



Roman

Panel

Combi

Roller



Product Code: -Canvas art-52A
 9' (W) x 10' (H) | 108" x 120" = 90.0 SQF



Product Code: Canvas art-52B
 5' (W) x 8' (H) | 60" x 96" = 40.0 SQF



Product Code: Canvas art-52C
 8' (W) x 5' (H) | 96" x 60" = 40.0 SQF

Application for (Blinds):



Roman

Panel

Combi

Roller





Product Code: -Canvas art-53A
 9' (W) x 10' (H) | 108" x 120" = 90.0 SQF



Product Code: Canvas art-53B
 5' (W) x 8' (H) | 60" x 96" = 40.0 SQF



Product Code: Canvas art-53C
 8' (W) x 5' (H) | 96" x 60" = 40.0 SQF

Application for (Blinds):



Roman

Panel

Combi

Roller



Product Code: -Canvas art-54A
9' (W) x 10' (H) | 108" x 120" = 90.0 SQF



Product Code: Canvas art-54B
5' (W) x 8' (H) | 60" x 96" = 40.0 SQF



Product Code: Canvas art-54C
8' (W) x 5' (H) | 96" x 60" = 40.0 SQF

Application for (Blinds):

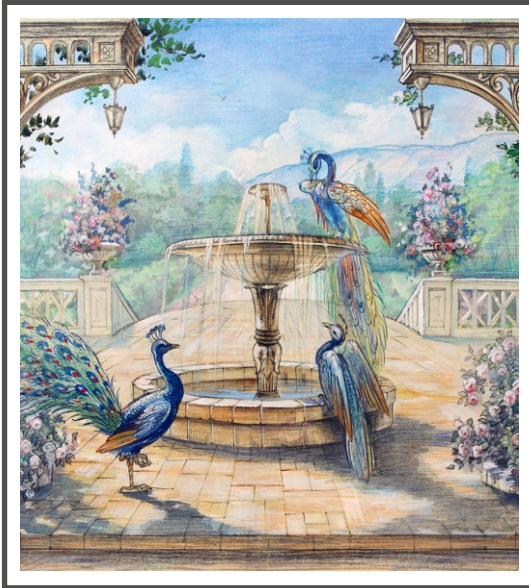


Roman

Panel

Combi

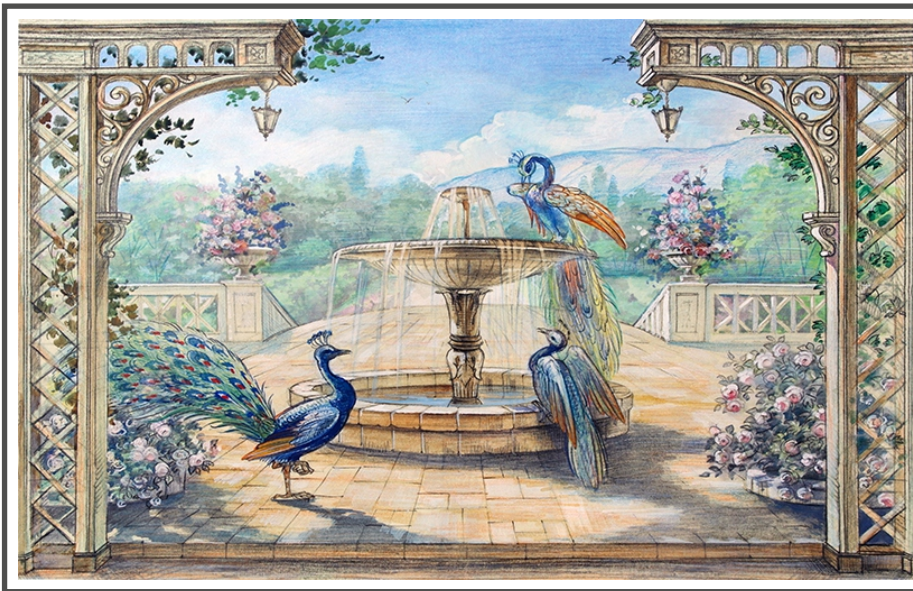
Roller



Product Code: -Canvas art-55A
 9' (W) x 10' (H) | 108" x 120" = 90.0 SQF



Product Code: Canvas art-55B
 5' (W) x 8' (H) | 60" x 96" = 40.0 SQF

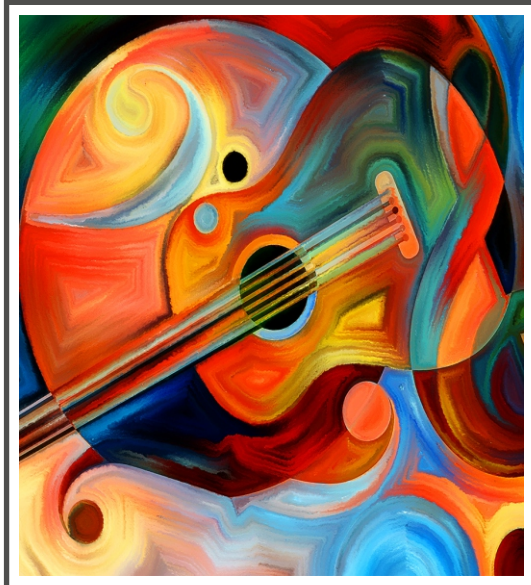


Product Code: Canvas art-55C
 8' (W) x 5' (H) | 96" x 60" = 40.0 SQF

Application for (Blinds):



Roman Panel Combi Roller



Product Code: -Canvas art-56A
 9' (W) x 10' (H) | 108" x 120" = 90.0 SQF



Product Code: Canvas art-56B
 5' (W) x 8' (H) | 60" x 96" = 40.0 SQF



Product Code: Canvas art-56C
 8' (W) x 5' (H) | 96" x 60" = 40.0 SQF

Application for (Blinds):



Roman

Panel

Combi

Roller





Product Code: -Canvas art-57A
9' (W) x 10' (H) | 108" x 120" = 90.0 SQF



Product Code: Canvas art-57B
5' (W) x 8' (H) | 60" x 96" = 40.0 SQF



Product Code: Canvas art-57C
8' (W) x 5' (H) | 96" x 60" = 40.0 SQF

Application for (Blinds):



Roman

Panel

Combi

Roller



Product Code: -Canvas art-58A
9' (W) x 10' (H) | 108" x 120" = 90.0 SQF



Product Code: Canvas art-58B
5' (W) x 8' (H) | 60" x 96" = 40.0 SQF



Product Code: Canvas art-58C
8' (W) x 5' (H) | 96" x 60" = 40.0 SQF

Application for (Blinds):



Roman

Panel

Combi

Roller



Product Code: -Canvas art-59A
 9' (W) x 10' (H) | 108" x 120" = 90.0 SQF



Product Code: Canvas art-59B
 5' (W) x 8' (H) | 60" x 96" = 40.0 SQF



Product Code: Canvas art-59C
 8' (W) x 5' (H) | 96" x 60" = 40.0 SQF

Application for (Blinds):

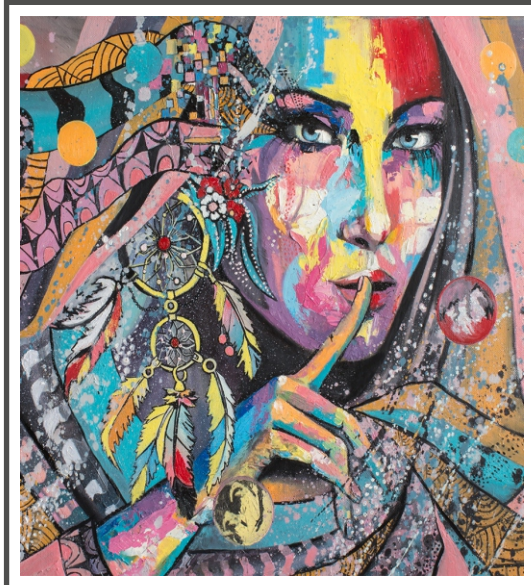


Roman

Panel

Combi

Roller



Product Code: -Canvas art-60A
9' (W) x 10' (H) | 108" x 120" = 90.0 SQF



Product Code: Canvas art-60B
5' (W) x 8' (H) | 60" x 96" = 40.0 SQF



Product Code: Canvas art-60C
8' (W) x 5' (H) | 96" x 60" = 40.0 SQF

Application for (Blinds):

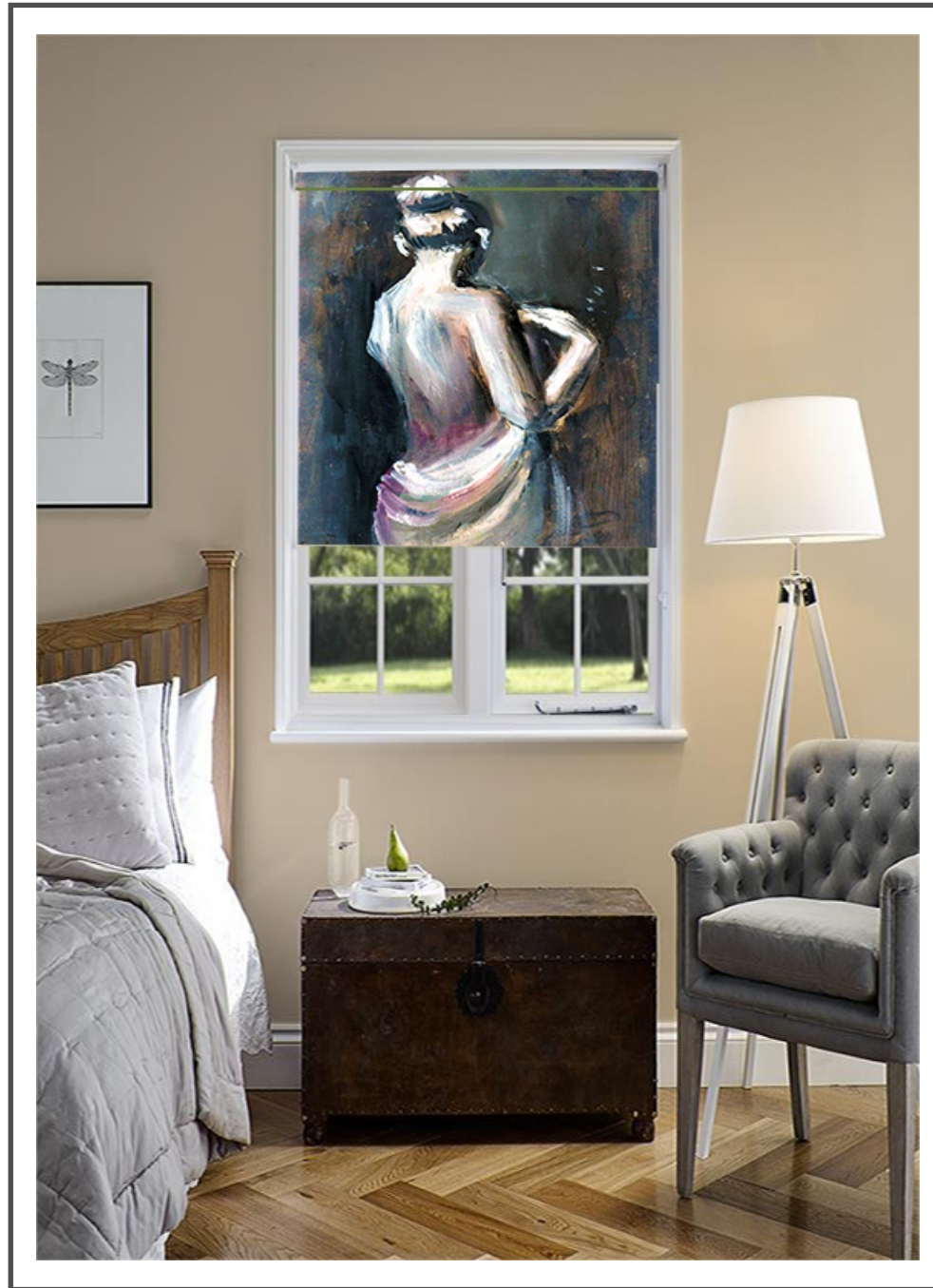


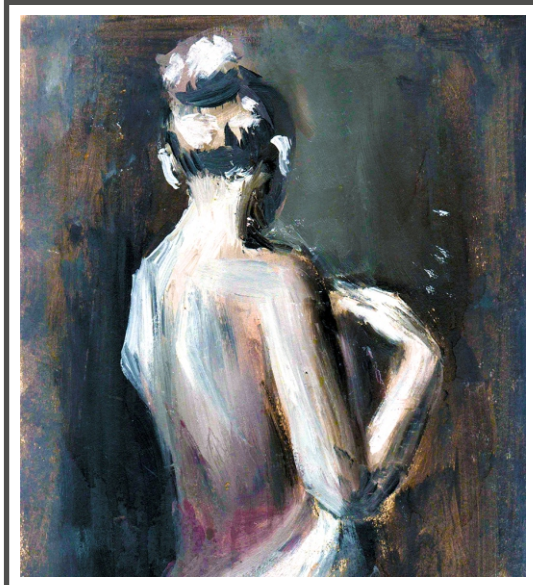
Roman

Panel

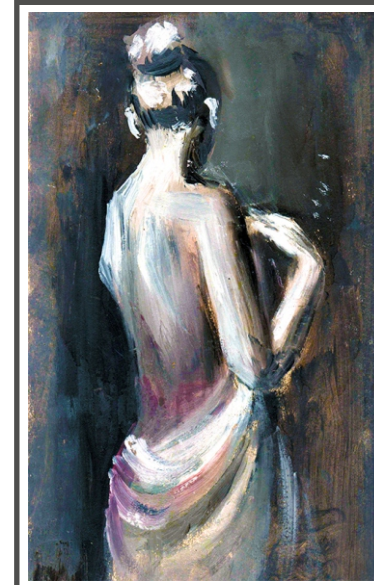
Combi

Roller

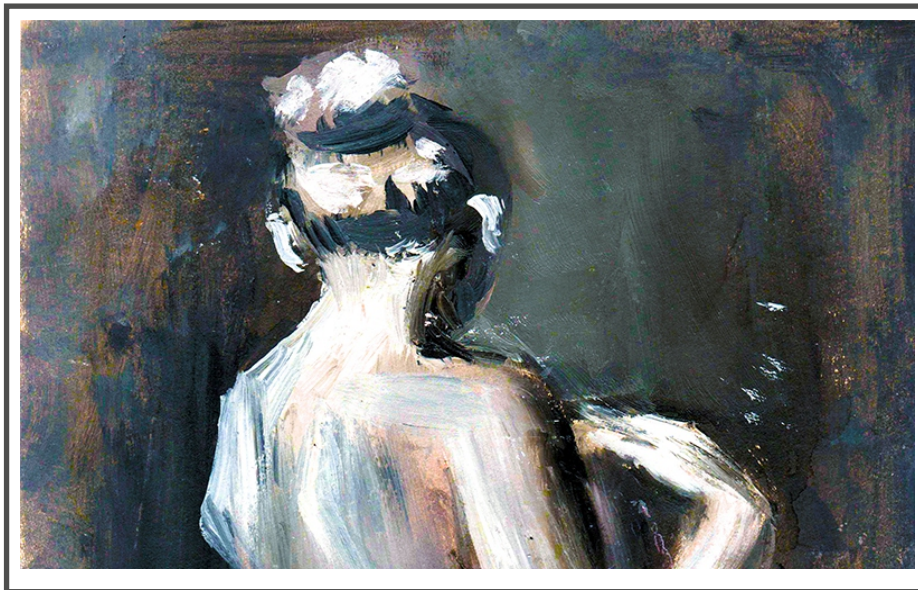




Product Code: -Canvas art-61A
9' (W) x 10' (H) | 108" x 120" = 90.0 SQF



Product Code: Canvas art-61B
5' (W) x 8' (H) | 60" x 96" = 40.0 SQF



Product Code: Canvas art-61C
8' (W) x 5' (H) | 96" x 60" = 40.0 SQF

Application for (Blinds):



Roman

Panel

Combi

Roller



Product Code: -Canvas art-62A
9' (W) x 10' (H) | 108" x 120" = 90.0 SQF



Product Code: Canvas art-62B
5' (W) x 8' (H) | 60" x 96" = 40.0 SQF



Product Code: Canvas art-62C
8' (W) x 5' (H) | 96" x 60" = 40.0 SQF

Application for (Blinds):



Roman

Panel

Combi

Roller



Product Code: -Canvas art-63A
 9' (W) x 10' (H) | 108" x 120" = 90.0 SQF



Product Code: Canvas art-63B
 5' (W) x 8' (H) | 60" x 96" = 40.0 SQF



Product Code: Canvas art-63C
 8' (W) x 5' (H) | 96" x 60" = 40.0 SQF

Application for (Blinds):

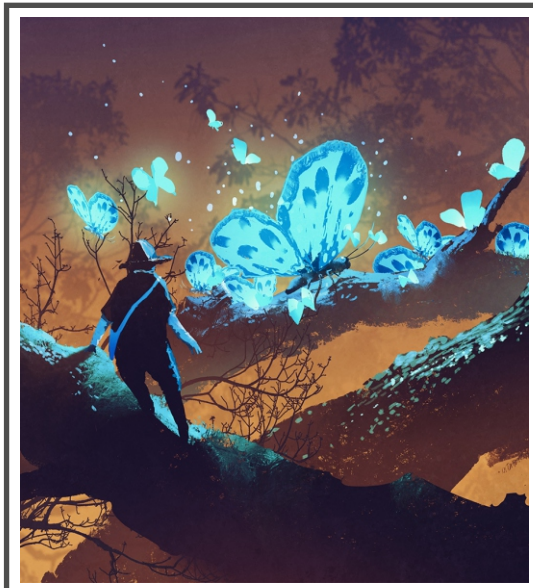


Roman

Panel

Combi

Roller



Product Code: -Canvas art-64A
 9' (W) x 10' (H) | 108" x 120" = 90.0 SQF



Product Code: Canvas art-64B
 5' (W) x 8' (H) | 60" x 96" = 40.0 SQF



Product Code: Canvas art-64C
 8' (W) x 5' (H) | 96" x 60" = 40.0 SQF

Application for (Blinds):

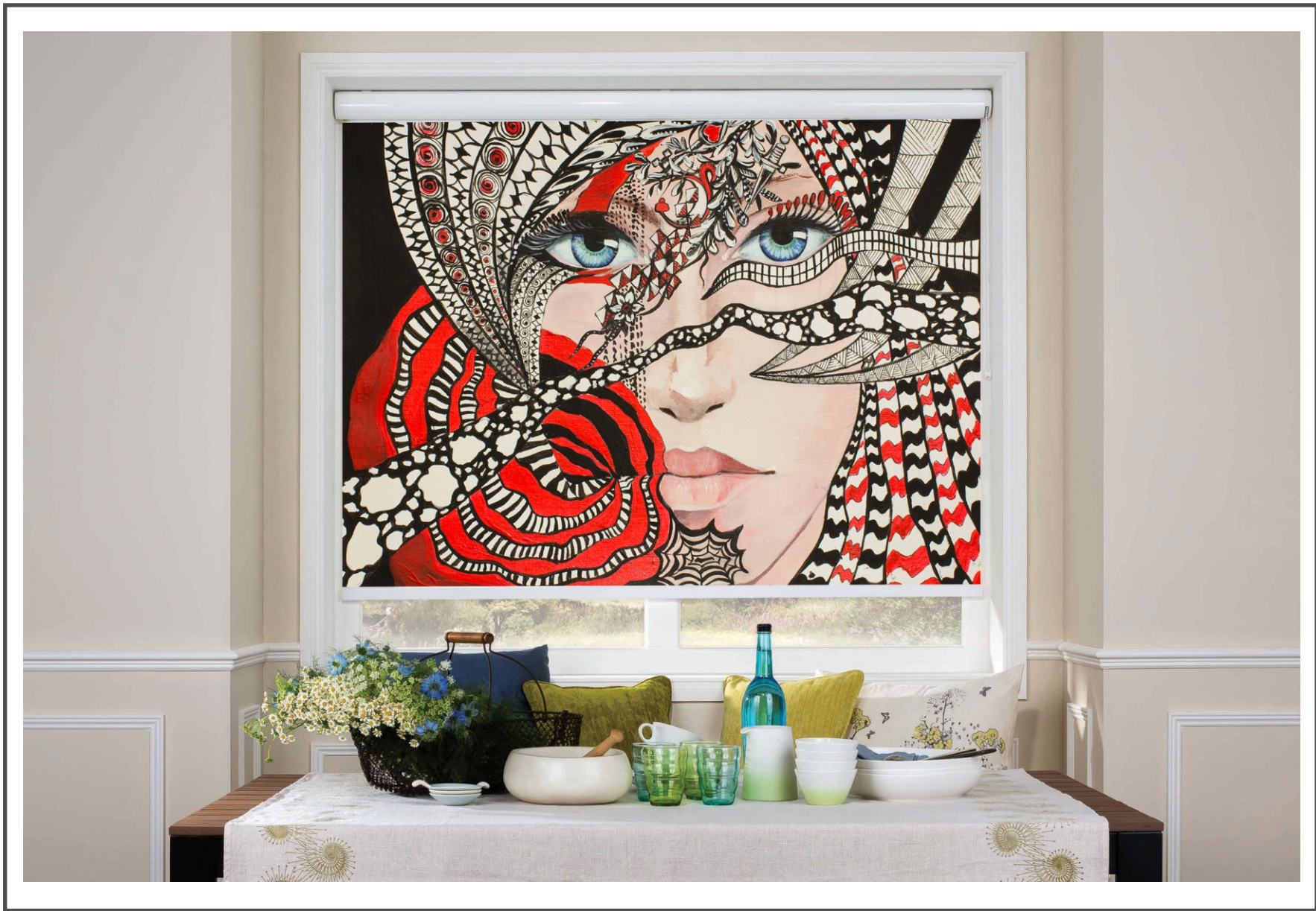


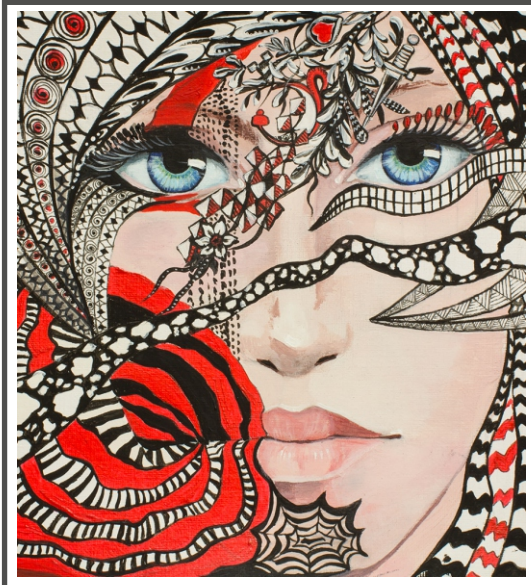
Roman

Panel

Combi

Roller

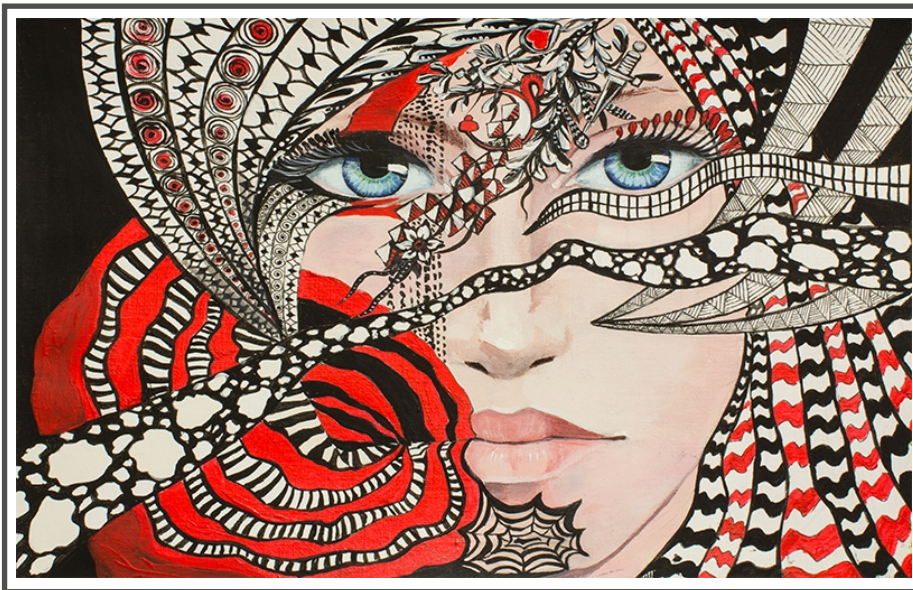




Product Code: -Canvas art-65A
9' (W) x 10' (H) | 108" x 120" = 90.0 SQF



Product Code: Canvas art-65B
5' (W) x 8' (H) | 60" x 96" = 40.0 SQF



Product Code: Canvas art-65C
8' (W) x 5' (H) | 96" x 60" = 40.0 SQF

Application for (Blinds):



Roman

Panel

Combi

Roller



Product Code: -Canvas art-66A
 9' (W) x 10' (H) | 108" x 120" = 90.0 SQF



Product Code: Canvas art-66B
 5' (W) x 8' (H) | 60" x 96" = 40.0 SQF



Product Code: Canvas art-66C
 8' (W) x 5' (H) | 96" x 60" = 40.0 SQF

Application for (Blinds):

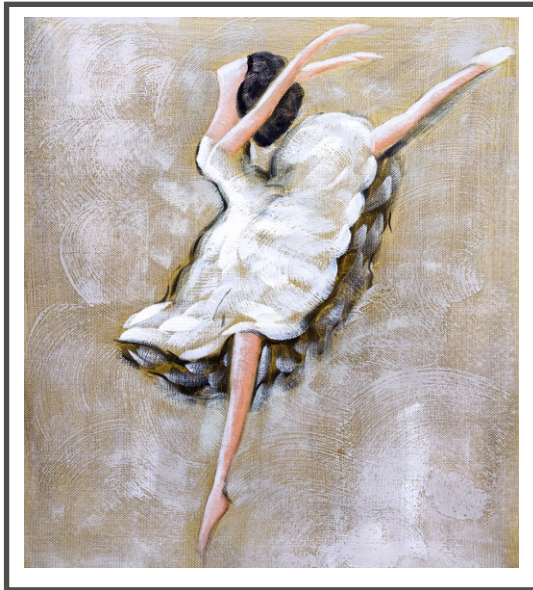


Roman

Panel

Combi

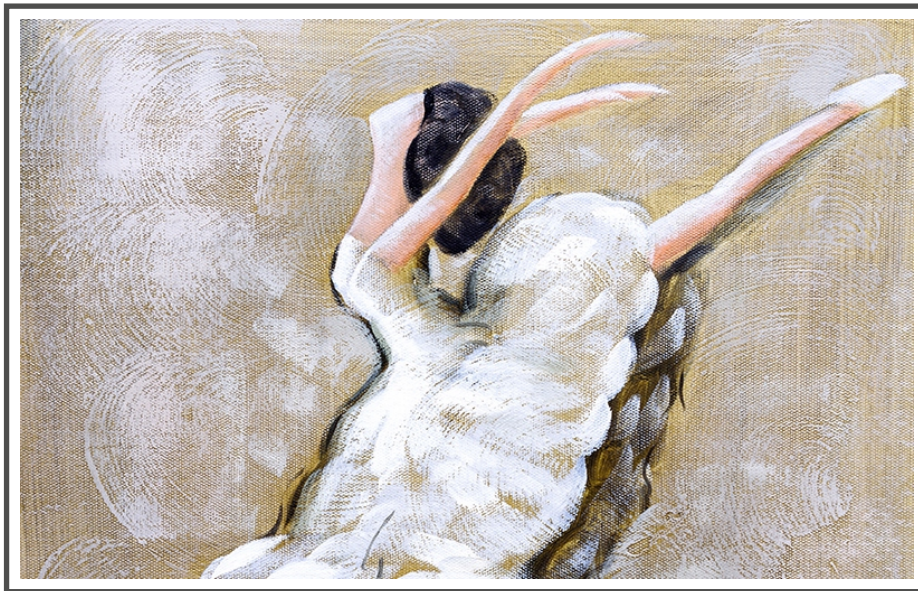
Roller



Product Code: -Canvas art-67A
 9' (W) x 10' (H) | 108" x 120" = 90.0 SQF



Product Code: Canvas art-67B
 5' (W) x 8' (H) | 60" x 96" = 40.0 SQF



Product Code: Canvas art-67C
 8' (W) x 5' (H) | 96" x 60" = 40.0 SQF

Application for (Blinds):



Roman

Panel

Combi

Roller



Product Code: -Canvas art-68A
 9' (W) x 10' (H) | 108" x 120" = 90.0 SQF



Product Code: Canvas art-68B
 5' (W) x 8' (H) | 60" x 96" = 40.0 SQF



Product Code: Canvas art-68C
 8' (W) x 5' (H) | 96" x 60" = 40.0 SQF

Application for (Blinds):



Roman

Panel

Combi

Roller





Product Code: -Canvas art-69A
 9' (W) x 10' (H) | 108" x 120" = 90.0 SQF



Product Code: Canvas art-69B
 5' (W) x 8' (H) | 60" x 96" = 40.0 SQF



Product Code: Canvas art-69C
 8' (W) x 5' (H) | 96" x 60" = 40.0 SQF

Application for (Blinds):



Roman

Panel

Combi

Roller



Product Code: -Canvas art-70A
9' (W) x 10' (H) | 108" x 120" = 90.0 SQF



Product Code: Canvas art-70B
5' (W) x 8' (H) | 60" x 96" = 40.0 SQF



Product Code: Canvas art-70C
8' (W) x 5' (H) | 96" x 60" = 40.0 SQF

Application for (Blinds):



Roman

Panel

Combi

Roller



Product Code: -Canvas art-71A
9' (W) x 10' (H) | 108" x 120" = 90.0 SQF



Product Code: Canvas art-71B
5' (W) x 8' (H) | 60" x 96" = 40.0 SQF



Product Code: Canvas art-71C
8' (W) x 5' (H) | 96" x 60" = 40.0 SQF

Application for (Blinds):



Roman

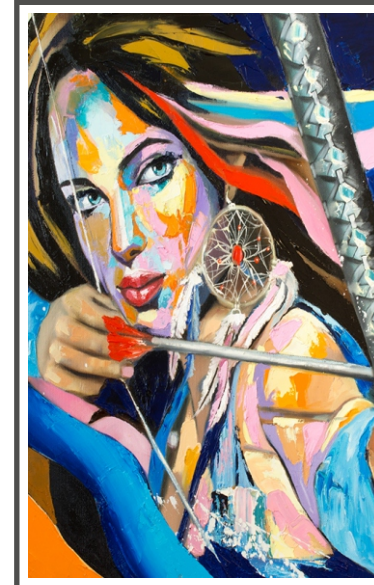
Panel

Combi

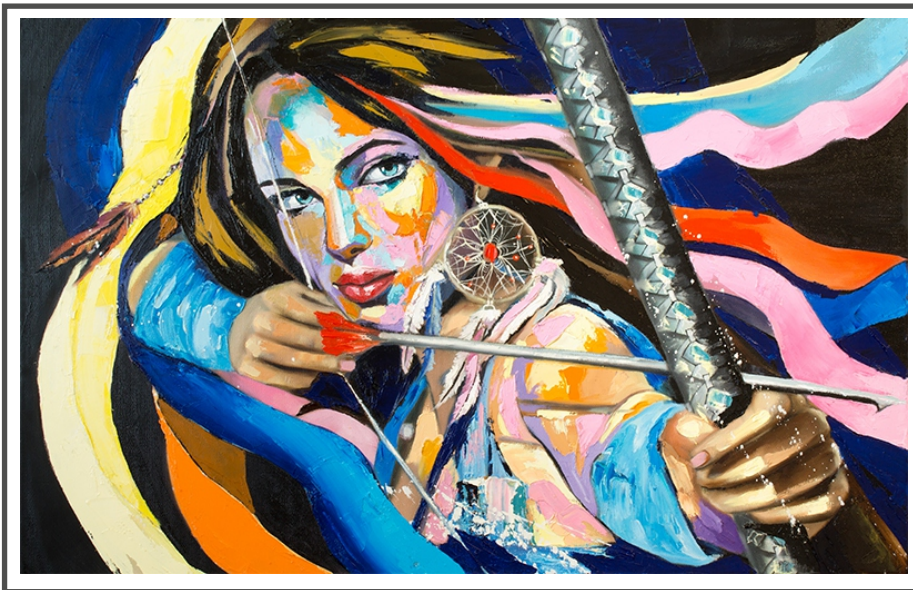
Roller



Product Code: -Canvas art-72A
9' (W) x 10' (H) | 108" x 120" = 90.0 SQF



Product Code: Canvas art-72B
5' (W) x 8' (H) | 60" x 96" = 40.0 SQF



Product Code: Canvas art-72C
8' (W) x 5' (H) | 96" x 60" = 40.0 SQF

Application for (Blinds):

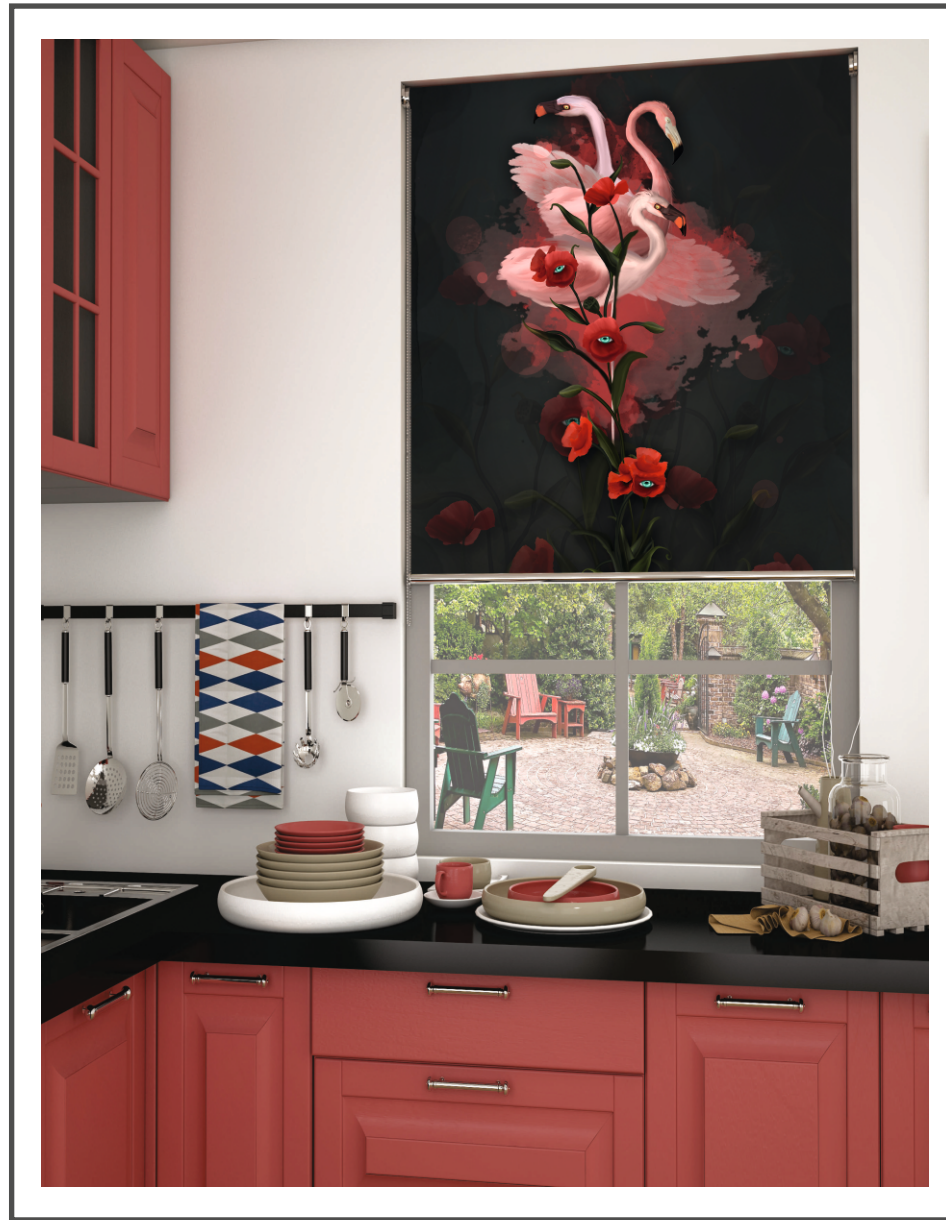


Roman

Panel

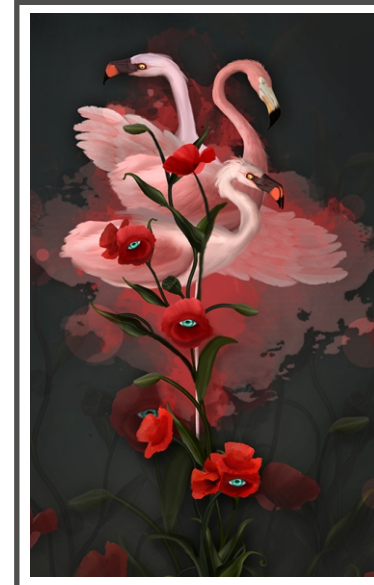
Combi

Roller





Product Code: -Canvas art-73A
 9' (W) x 10' (H) | 108" x 120" = 90.0 SQF



Product Code: Canvas art-73B
 5' (W) x 8' (H) | 60" x 96" = 40.0 SQF



Product Code: Canvas art-73C
 8' (W) x 5' (H) | 96" x 60" = 40.0 SQF

Application for (Blinds):



Roman

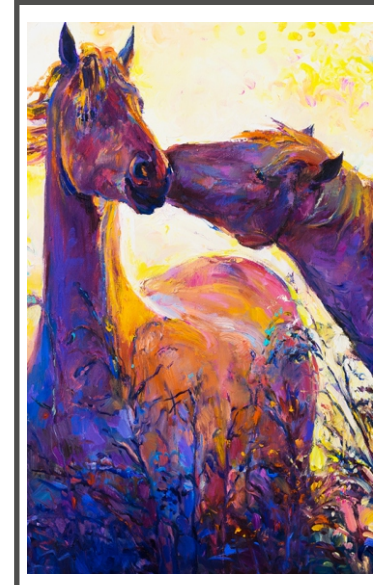
Panel

Combi

Roller



Product Code: -Canvas art-74A
 9' (W) x 10' (H) | 108" x 120" = 90.0 SQF



Product Code: Canvas art-74B
 5' (W) x 8' (H) | 60" x 96" = 40.0 SQF



Product Code: Canvas art-74C
 8' (W) x 5' (H) | 96" x 60" = 40.0 SQF

Application for (Blinds):



Roman

Panel

Combi

Roller



Product Code: -Canvas art-75A
 9' (W) x 10' (H) | 108" x 120" = 90.0 SQF



Product Code: Canvas art-75B
 5' (W) x 8' (H) | 60" x 96" = 40.0 SQF



Product Code: Canvas art-75C
 8' (W) x 5' (H) | 96" x 60" = 40.0 SQF

Application for (Blinds):

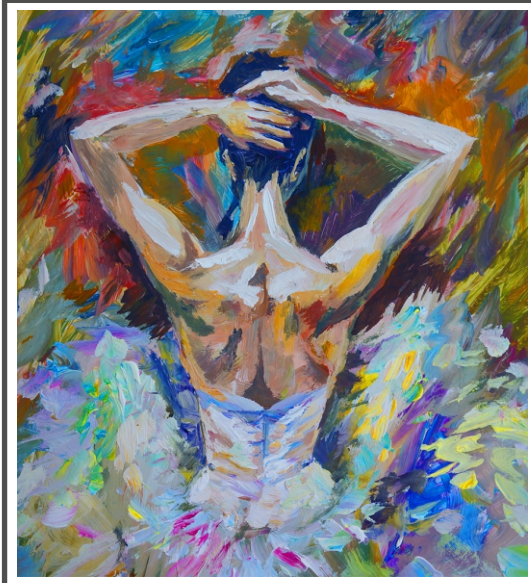


Roman

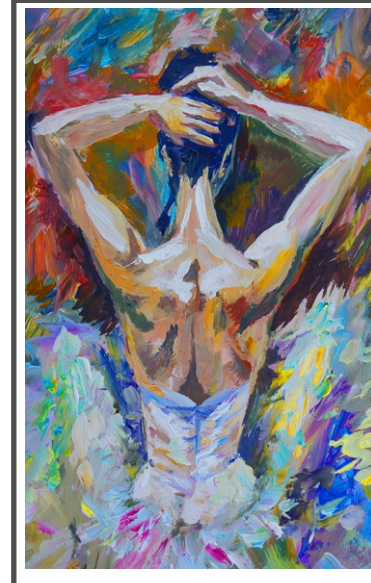
Panel

Combi

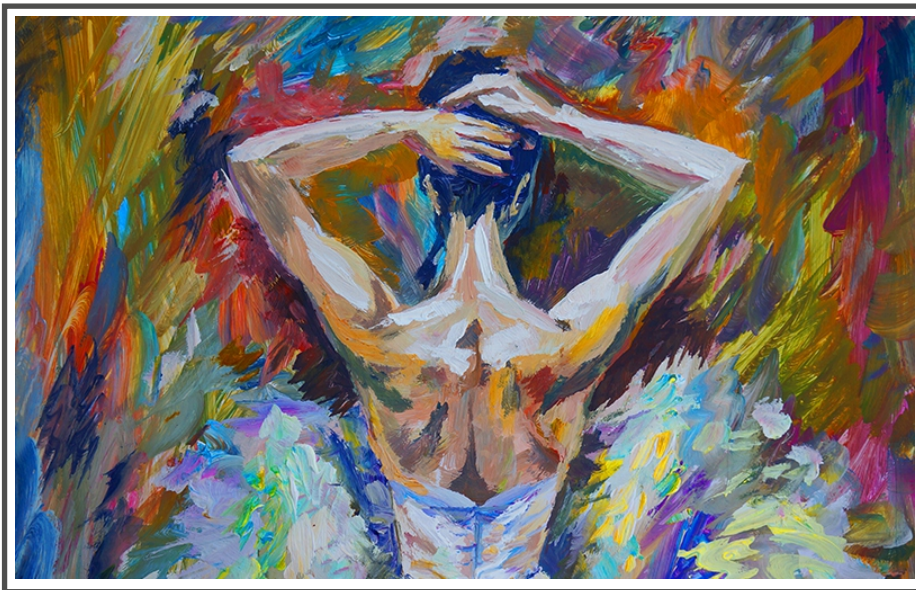
Roller



Product Code: -Canvas art-76A
 9' (W) x 10' (H) | 108" x 120" = 90.0 SQF



Product Code: Canvas art-76B
 5' (W) x 8' (H) | 60" x 96" = 40.0 SQF



Product Code: Canvas art-76C
 8' (W) x 5' (H) | 96" x 60" = 40.0 SQF

Application for (Blinds):



Roman

Panel

Combi

Roller





Product Code: -Canvas art-77A
 9' (W) x 10' (H) | 108" x 120" = 90.0 SQF



Product Code: Canvas art-77B
 5' (W) x 8' (H) | 60" x 96" = 40.0 SQF



Product Code: Canvas art-77C
 8' (W) x 5' (H) | 96" x 60" = 40.0 SQF

Application for (Blinds):

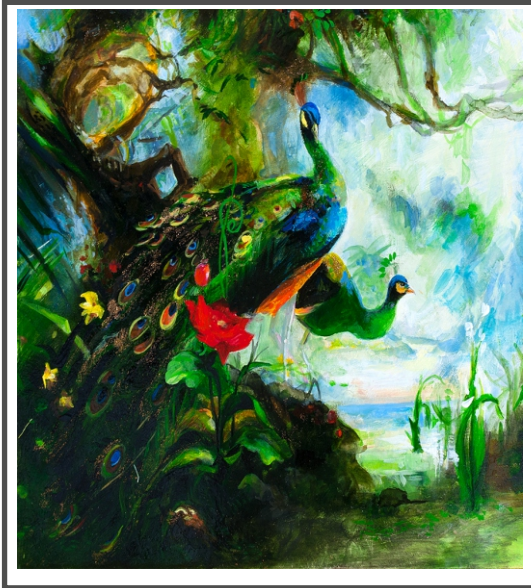


Roman

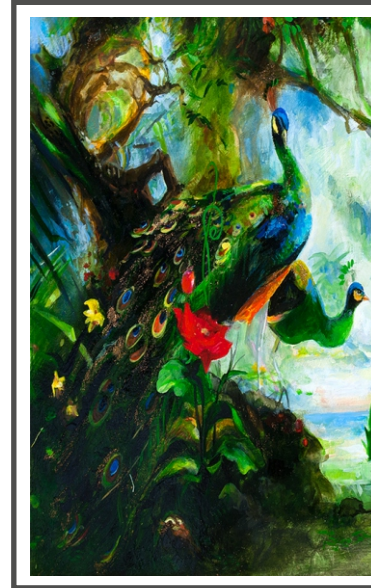
Panel

Combi

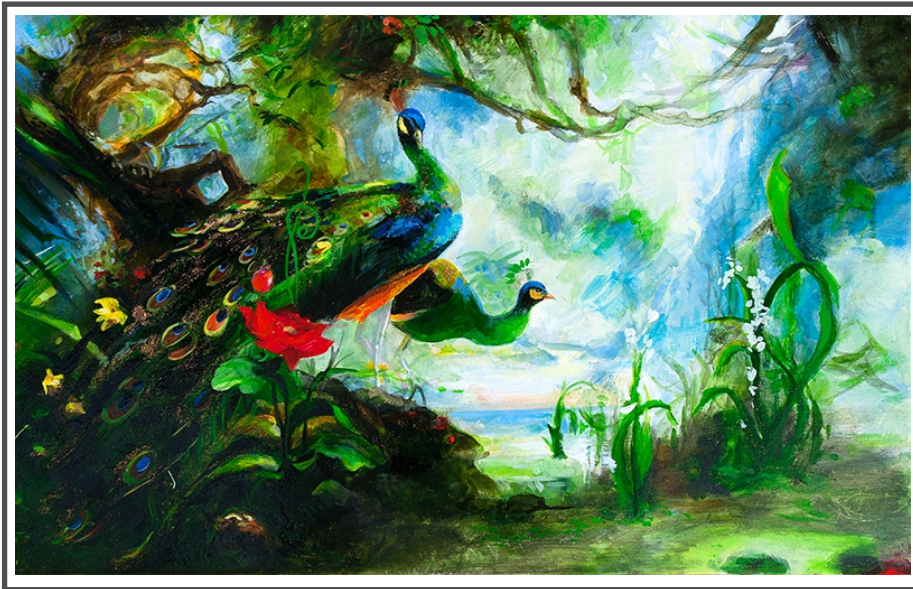
Roller



Product Code: -Canvas art-78A
9' (W) x 10' (H) | 108" x 120" = 90.0 SQF



Product Code: Canvas art-78B
5' (W) x 8' (H) | 60" x 96" = 40.0 SQF



Product Code: Canvas art-78C
8' (W) x 5' (H) | 96" x 60" = 40.0 SQF

Application for (Blinds):

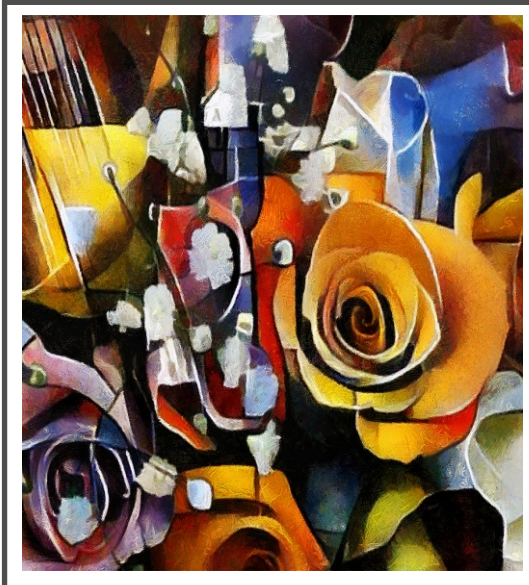


Roman

Panel

Combi

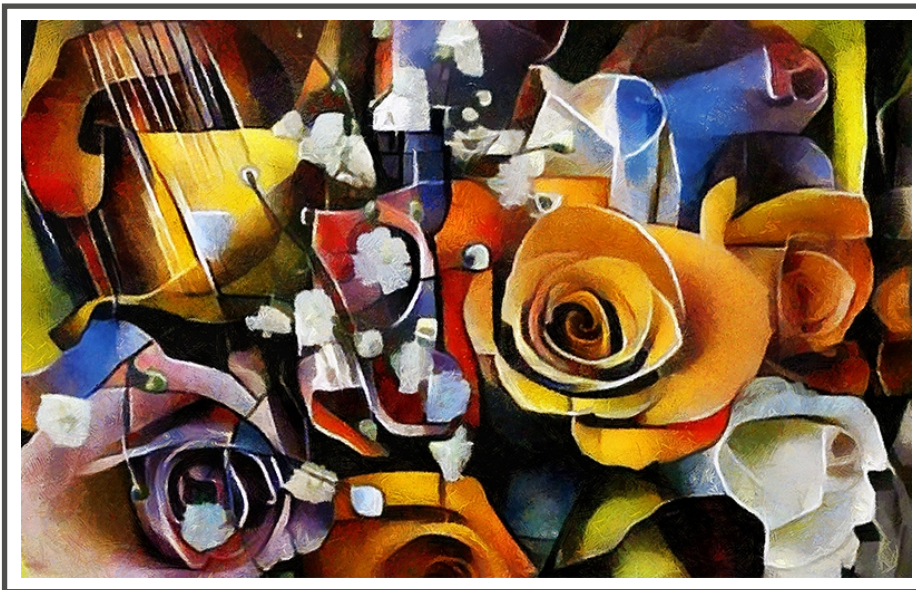
Roller



Product Code: -Canvas art-79A
 9' (W) x 10' (H) | 108" x 120" = 90.0 SQF



Product Code: Canvas art-79B
 5' (W) x 8' (H) | 60" x 96" = 40.0 SQF



Product Code: Canvas art-79C
 8' (W) x 5' (H) | 96" x 60" = 40.0 SQF

Application for (Blinds):



Roman

Panel

Combi

Roller





Product Code: -Canvas art-80A
9' (W) x 10' (H) | 108" x 120" = 90.0 SQF



Product Code: Canvas art-80B
5' (W) x 8' (H) | 60" x 96" = 40.0 SQF



Product Code: Canvas art-80C
8' (W) x 5' (H) | 96" x 60" = 40.0 SQF

Application for (Blinds):



Roman

Panel

Combi

Roller