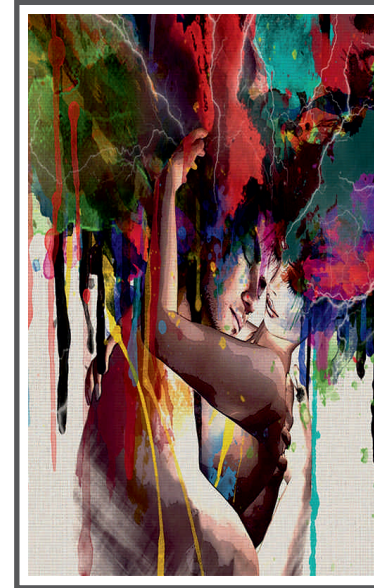


Product Code: -Canvas art-1A
9' (W) x 10' (H) | 108" x 120" = 90.0 SQF



Product Code: Canvas art-1B
5' (W) x 8' (H) | 60" x 96" = 40.0 SQF



Product Code: Canvas art-1C
8' (W) x 5' (H) | 96" x 60" = 40.0 SQF

Application for (Blinds):



Roman

Panel

Combi

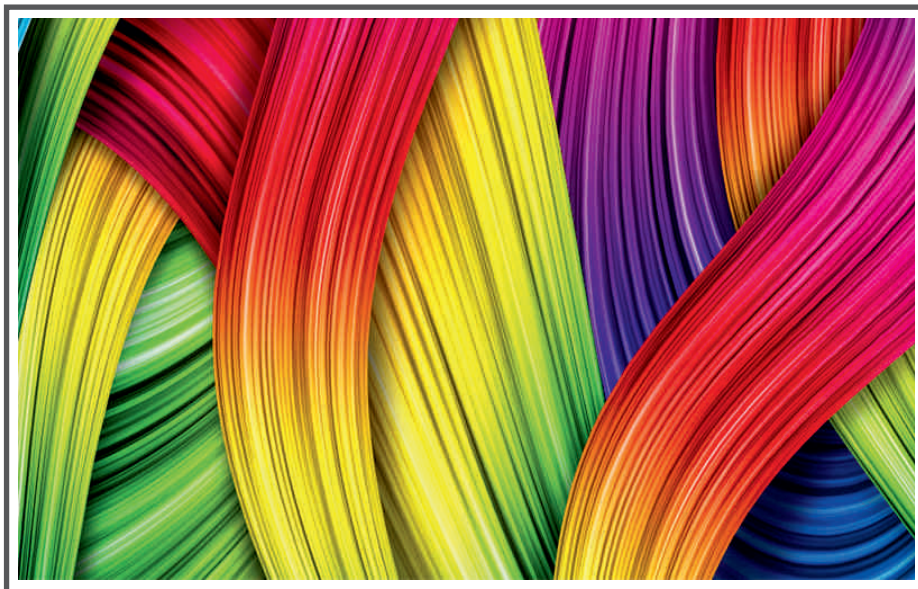
Roller



Product Code: Canvas art-2A
 9' (W) x 10' (H) | 108" x 120" = 90.0 SQF



Product Code: Canvas art-2B
 5' (W) x 8' (H) | 60" x 96" = 40.0 SQF



Product Code: Canvas art-2C
 8' (W) x 5' (H) | 96" x 60" = 40.0 SQF

Application for (Blinds):

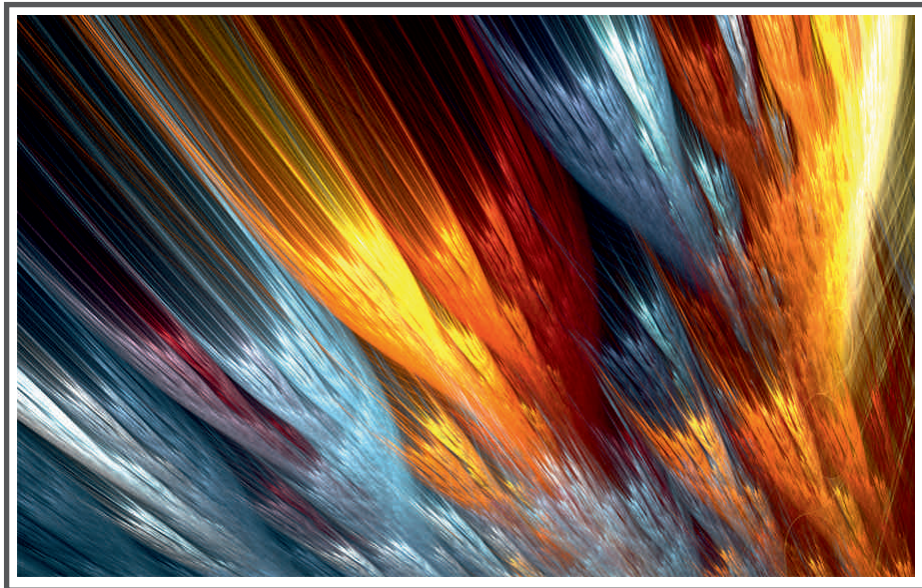


Roman

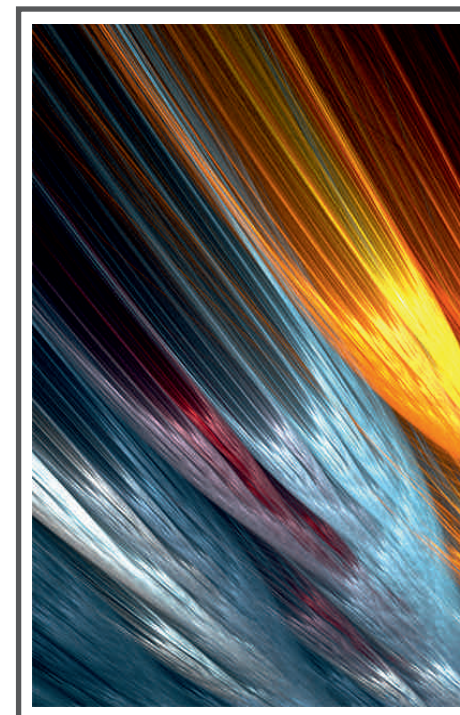
Panel

Combi

Roller



Product Code: Canvas art-3A
9' (W) x 6' (H) | 108" x 72" = 54.0 SQF



Product Code: Canvas art-3B
4' (W) x 6' (H) | 48" x 72" = 24.0 SQF

Application for (Blinds):

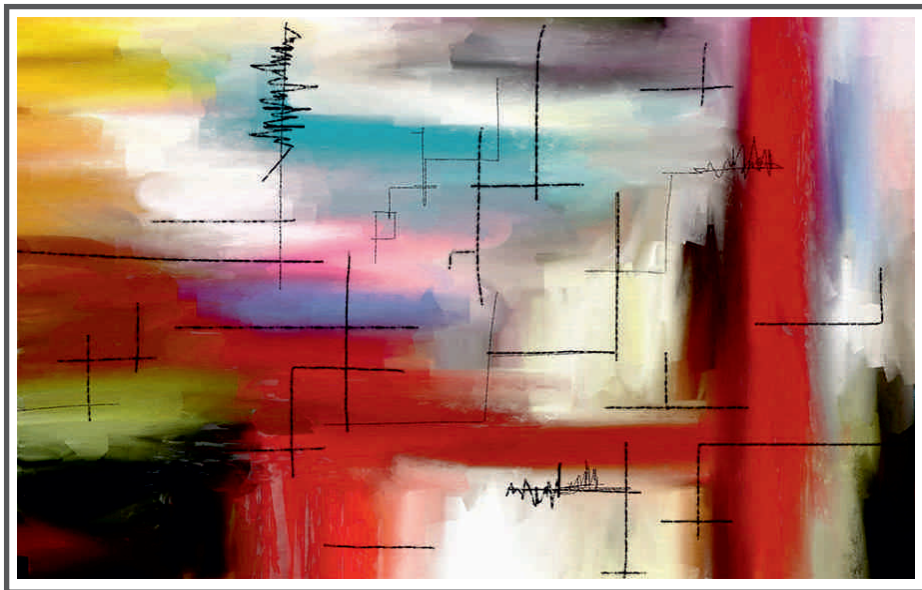


Roman

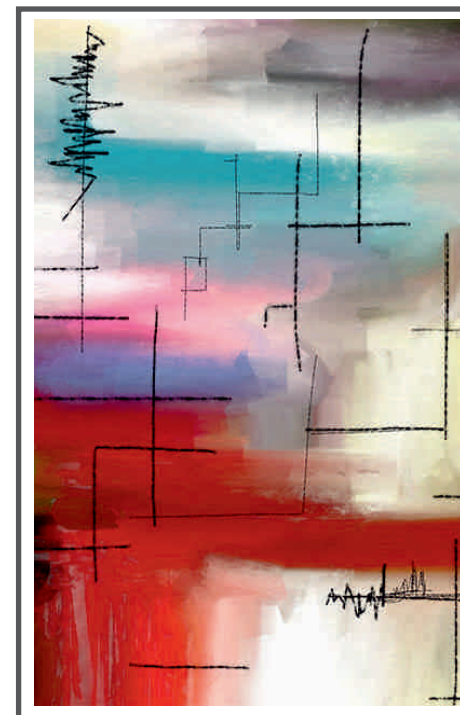
Panel

Combi

Roller



Product Code: Canvas art-4A
9' (W) x 6' (H) | 108" x 72" = 54.0 SQF



Product Code: Canvas art-4B
4' (W) x 6' (H) | 48" x 72" = 24.0 SQF

Application for (Blinds):

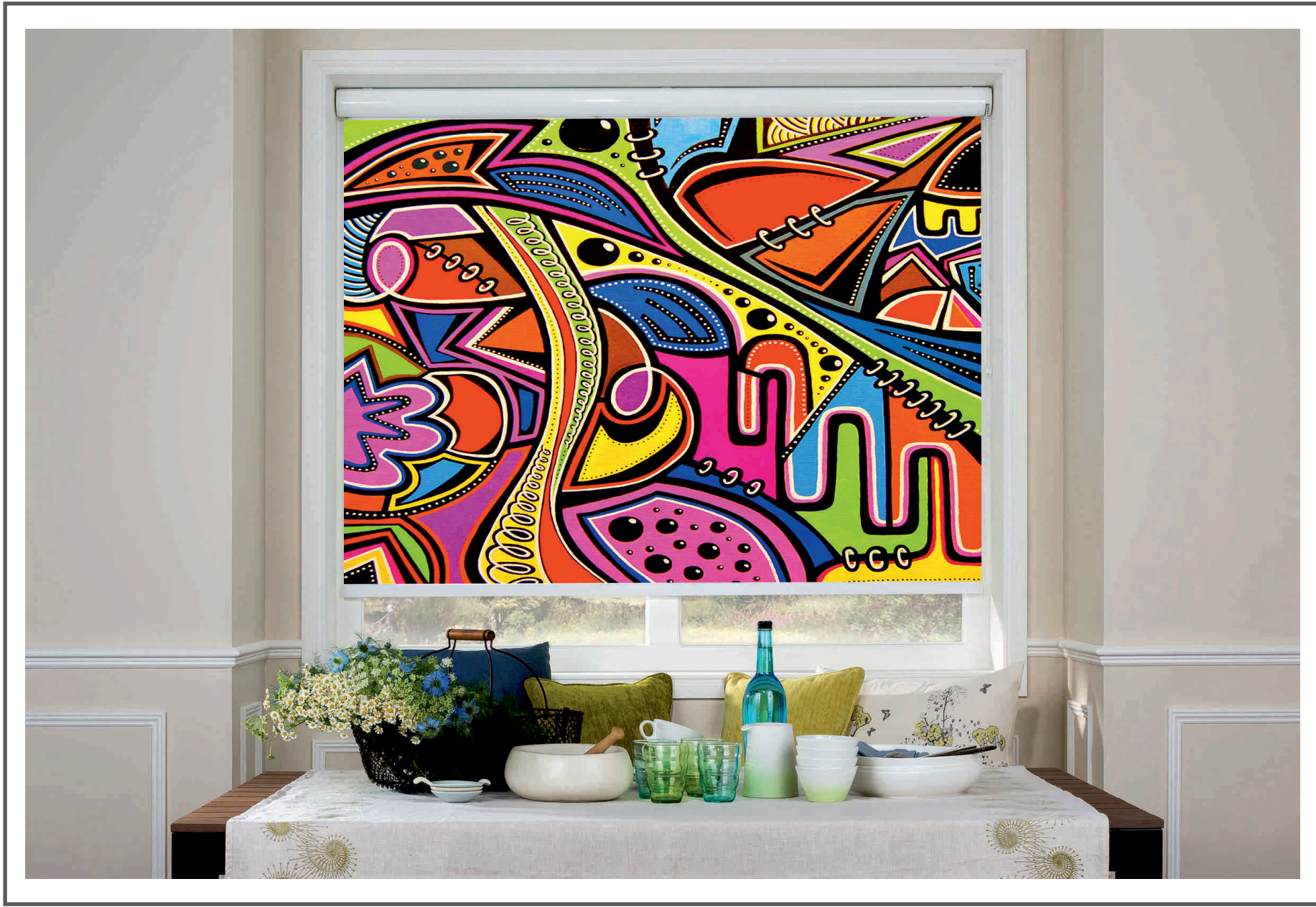


Roman

Panel

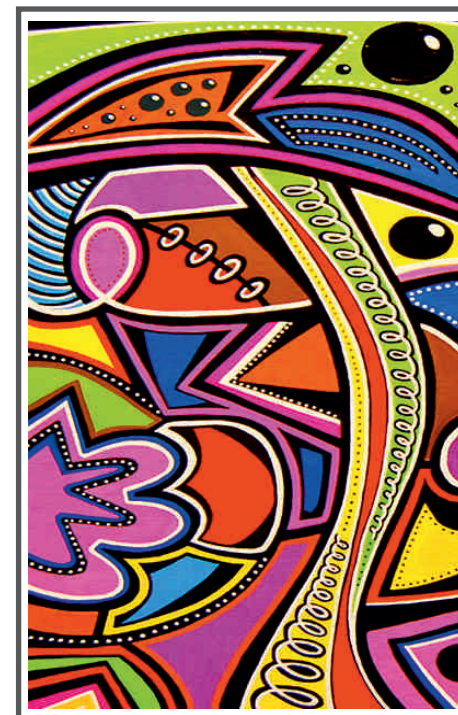
Combi

Roller





Product Code: Canvas art-5A
9' (W) x 6' (H) | 108" x 72" = 54.0 SQF



Product Code: Canvas art-5B
4' (W) x 6' (H) | 48" x 72" = 24.0 SQF

Application for (Blinds):



Roman

Panel

Combi

Roller



Product Code: Canvas art-6A
9' (W) x 6' (H) | 108" x 72" = 54.0 SQF



Product Code: Canvas art-6B
4' (W) x 6' (H) | 48" x 72" = 24.0 SQF

Application for (Blinds):



Roman

Panel

Combi

Roller



Product Code: Canvas art-7A
9' (W) x 6' (H) | 108" x 72" = 54.0 SQF



Product Code: Canvas art-7B
4' (W) x 6' (H) | 48" x 72" = 24.0 SQF

Application for (Blinds):

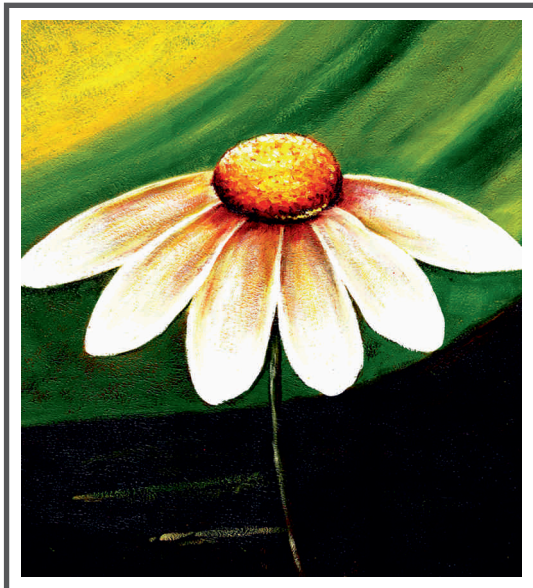


Roman

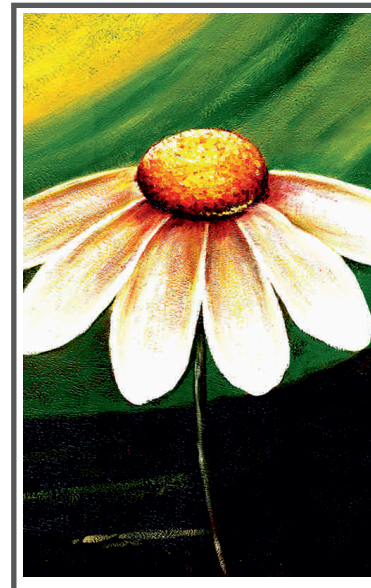
Panel

Combi

Roller



Product Code: Canvas art-8A
9' (W) x 10' (H) | 108" x 120" = 90.0 SQF



Product Code: Canvas art-8B
5' (W) x 8' (H) | 60" x 96" = 40.0 SQF



Product Code: Canvas art-8C
8' (W) x 5' (H) | 96" x 60" = 40.0 SQF

Application for (Blinds):

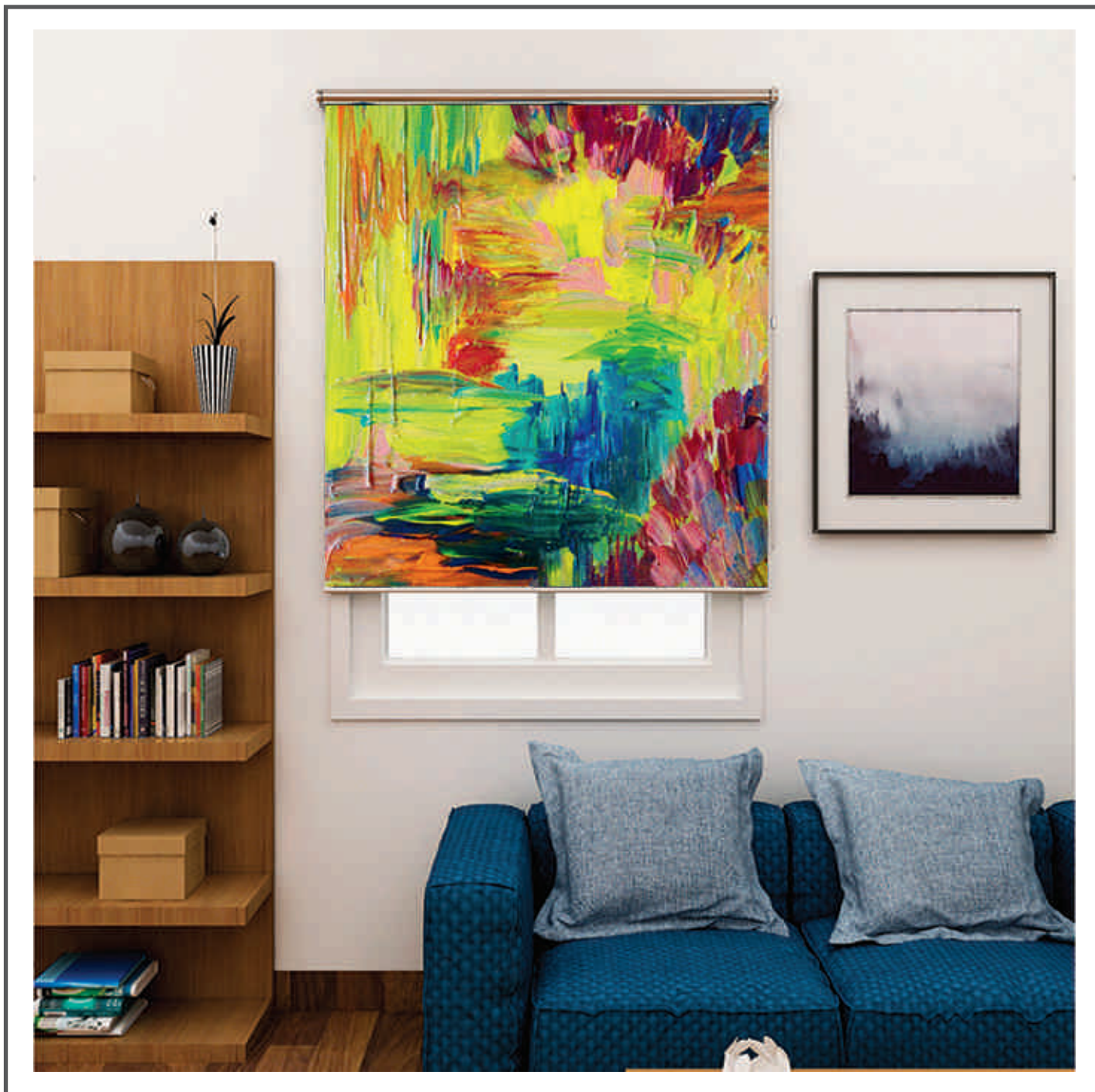


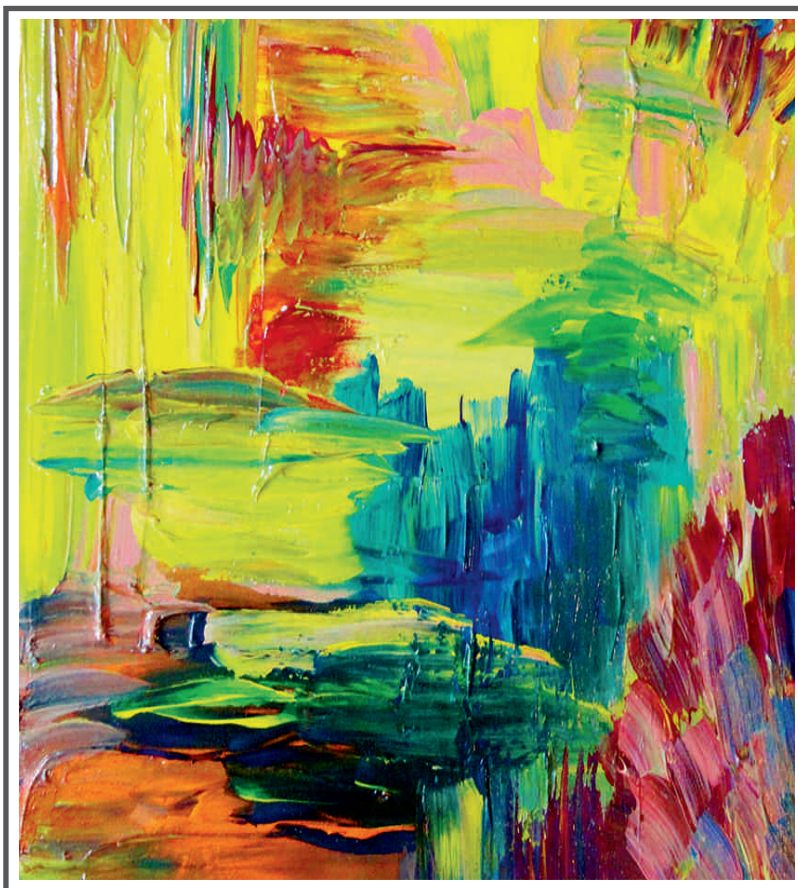
Roman

Panel

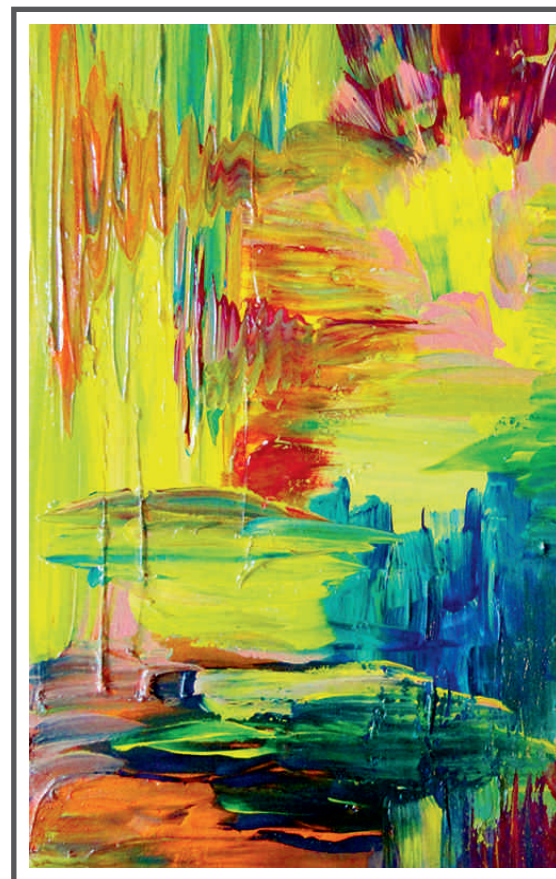
Combi

Roller





Product Code: Canvas art-9A
9' (W) x 10' (H) | 108" x 120" = 90.0 SQF



Product Code: Canvas art-9B
5' (W) x 8' (H) | 60" x 96" = 40.0 SQF

Application for (Blinds):

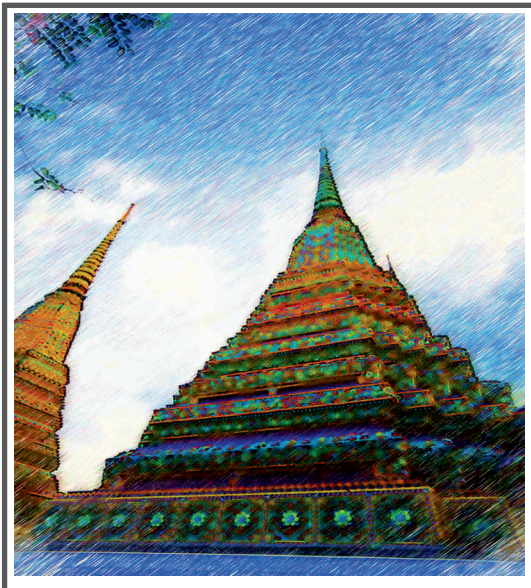


Roman

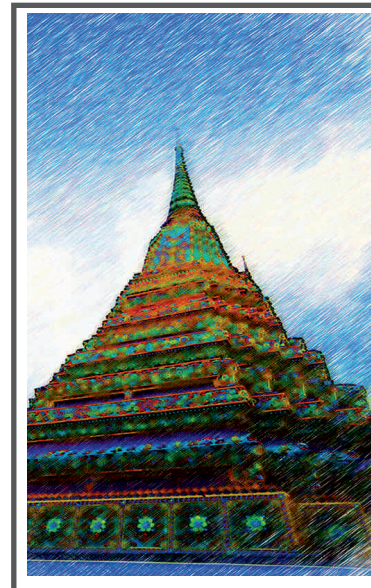
Panel

Combi

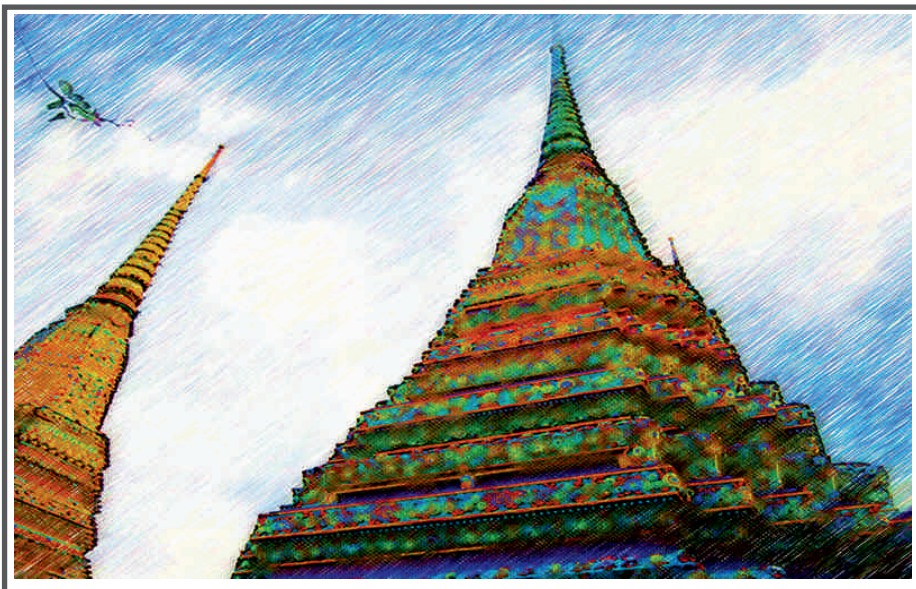
Roller



Product Code: Canvas art-10A
9' (W) x 10' (H) | 108" x 120" = 90.0 SQF



Product Code: Canvas art-10B
5' (W) x 8' (H) | 60" x 96" = 40.0 SQF



Product Code: Canvas art-10C
8' (W) x 5' (H) | 96" x 60" = 40.0 SQF

Application for (Blinds):

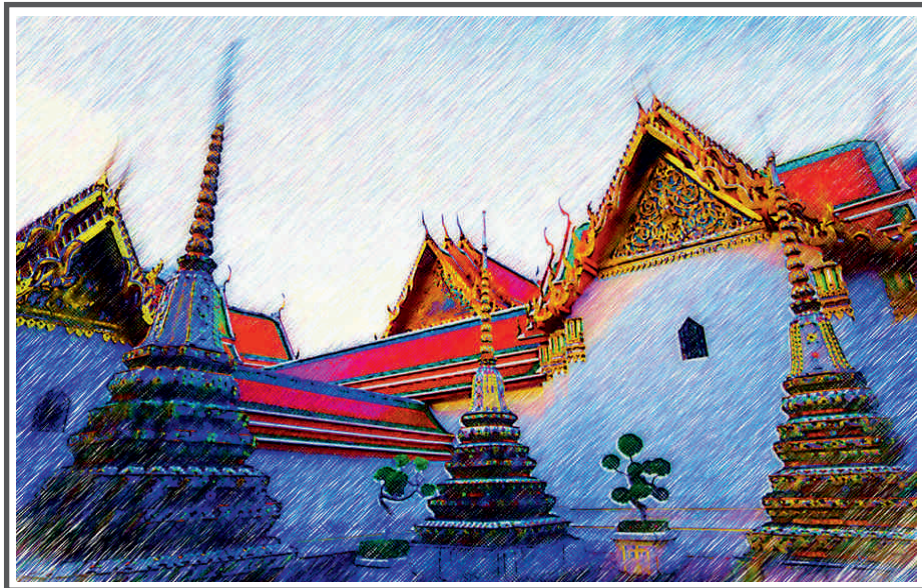


Roman

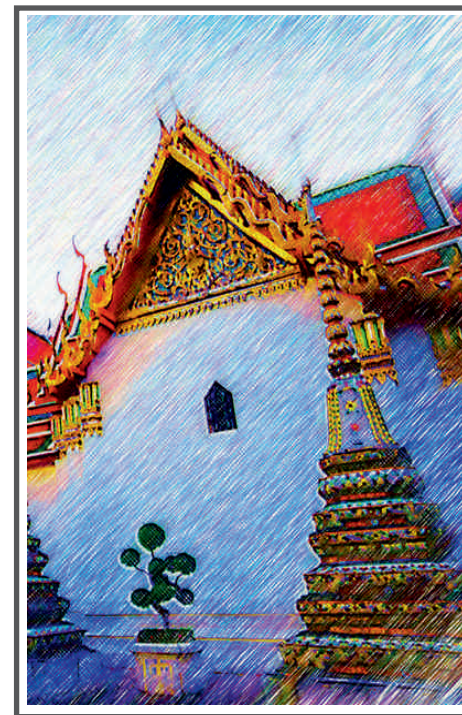
Panel

Combi

Roller



Product Code: Canvas art-11A
9' (W) x 6' (H) | 108" x 72" = 54.0 SQF



Product Code: Canvas art-11B
4' (W) x 6' (H) | 48" x 72" = 24.0 SQF

Application for (Blinds):



Roman

Panel

Combi

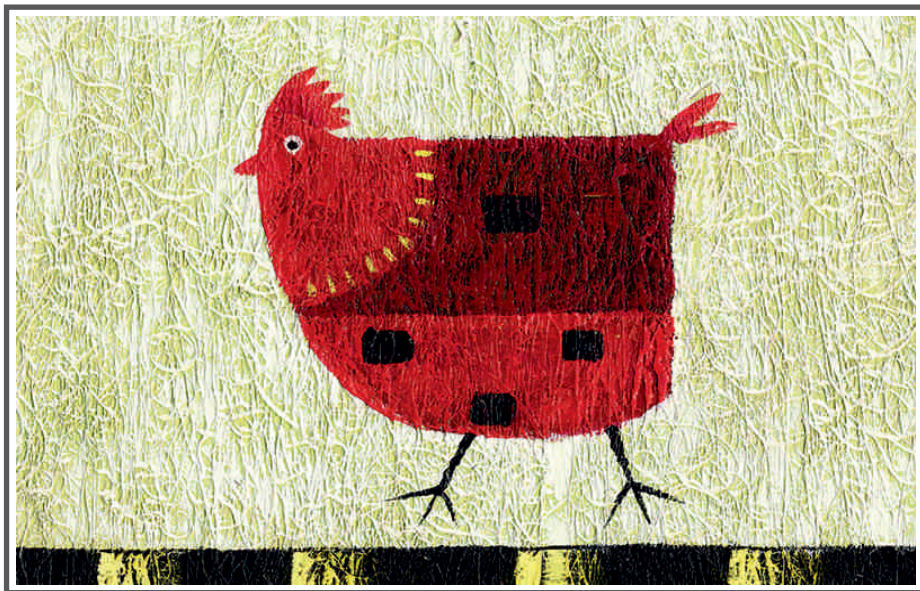
Roller



Product Code: Canvas art-12A
9' (W) x 10' (H) | 108" x 120" = 90.0 SQF



Product Code: Canvas art-12B
5' (W) x 8' (H) | 60" x 96" = 40.0 SQF



Product Code: Canvas art-12C
8' (W) x 5' (H) | 96" x 60" = 40.0 SQF

Application for (Blinds):



Roman

Panel

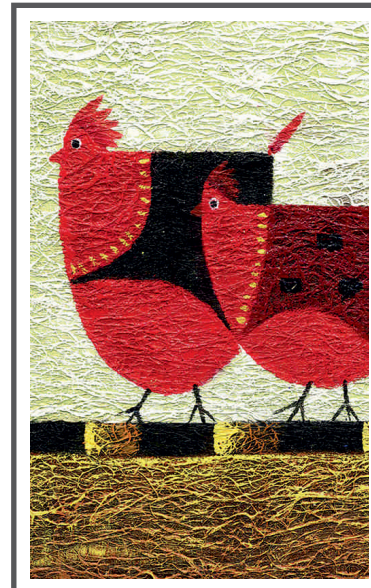
Combi

Roller





Product Code: Canvas art-13A
9' (W) x 10' (H) | 108" x 120" = 90.0 SQF



Product Code: Canvas art-13B
5' (W) x 8' (H) | 60" x 96" = 40.0 SQF



Product Code: Canvas art-13C
8' (W) x 5' (H) | 96" x 60" = 40.0 SQF

Application for (Blinds):



Roman

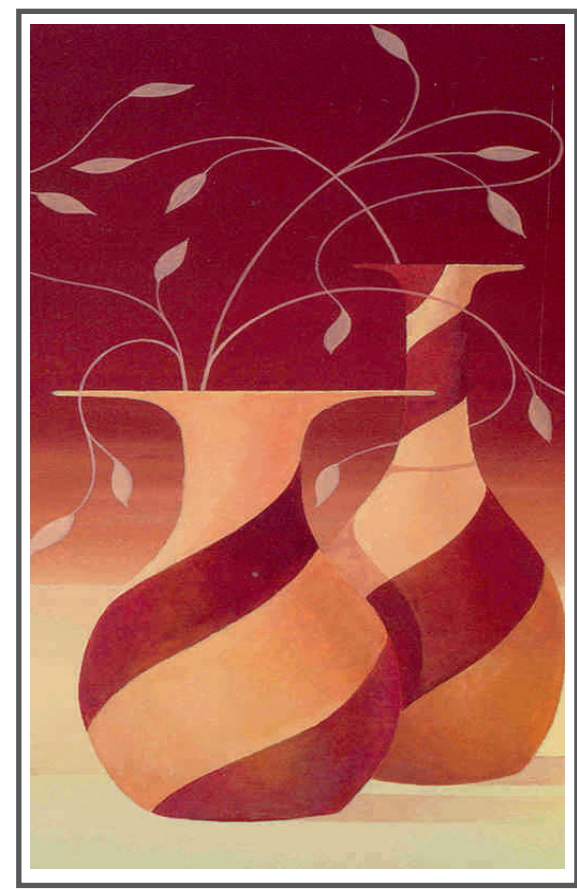
Panel

Combi

Roller

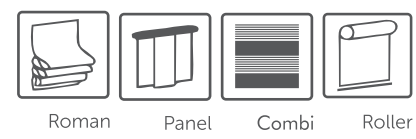


Product Code: Canvas art-14A
9' (W) x 10' (H) | 108" x 120" = 90.0 SQF



Product Code: Canvas art-14B
5' (W) x 8' (H) | 60" x 96" = 40.0 SQF

Application for (Blinds):



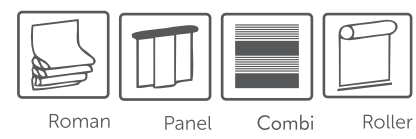


Product Code: Canvas art-15A
9' (W) x 10' (H) | 108" x 120" = 90.0 SQF



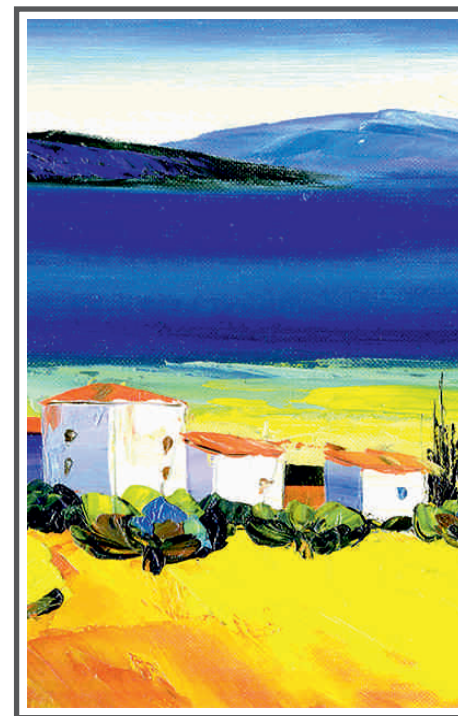
Product Code: Canvas art-15B
5' (W) x 8' (H) | 60" x 96" = 40.0 SQF

Application for (Blinds):





Product Code: Canvas art-16A
9' (W) x 6' (H) | 108" x 72" = 54.0 SQF



Product Code: Canvas art-16B
4' (W) x 6' (H) | 48" x 72" = 24.0 SQF

Application for (Blinds):



Roman

Panel

Combi

Roller





Product Code: Canvas art-17A
9' (W) x 10' (H) | 108" x 120" = 90.0 SQF



Product Code: Canvas art-17B
5' (W) x 8' (H) | 60" x 96" = 40.0 SQF



Product Code: Canvas art-17C
8' (W) x 5' (H) | 96" x 60" = 40.0 SQF

Application for (Blinds):



Roman

Panel

Combi

Roller



Product Code: Canvas art-18A
9' (W) x 6' (H) | 108" x 72" = 54.0 SQF



Product Code: Canvas art-18B
4' (W) x 6' (H) | 48" x 72" = 24.0 SQF

Application for (Blinds):



Roman

Panel

Combi

Roller



Product Code: Canvas art-19A
9' (W) x 6' (H) | 108" x 72" = 54.0 SQF



Product Code: Canvas art-19B
4' (W) x 6' (H) | 48" x 72" = 24.0 SQF

Application for (Blinds):

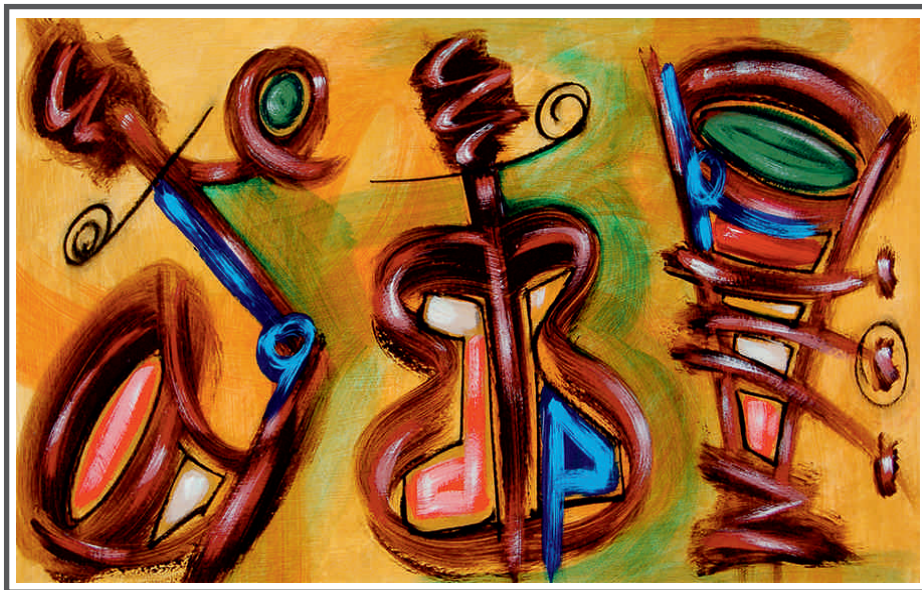


Roman

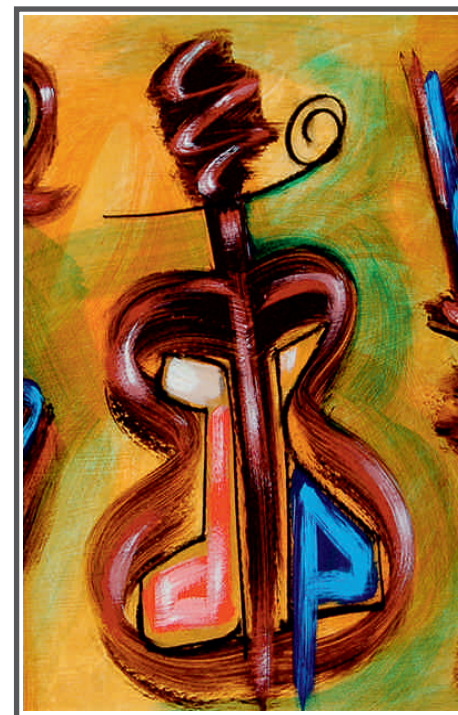
Panel

Combi

Roller



Product Code: Canvas art-20A
9' (W) x 6' (H) | 108" x 72" = 54.0 SQF



Product Code: Canvas art-20B
4' (W) x 6' (H) | 48" x 72" = 24.0 SQF

Application for (Blinds):



Roman

Panel

Combi

Roller





Product Code: Canvas art-21A
5' (W) x 8' (H) | 60" x 96" = 40.0 SQF



Product Code: Canvas art-21B
4' (W) x 6' (H) | 48" x 72" = 24.0 SQF

Application for (Blinds):



Roman

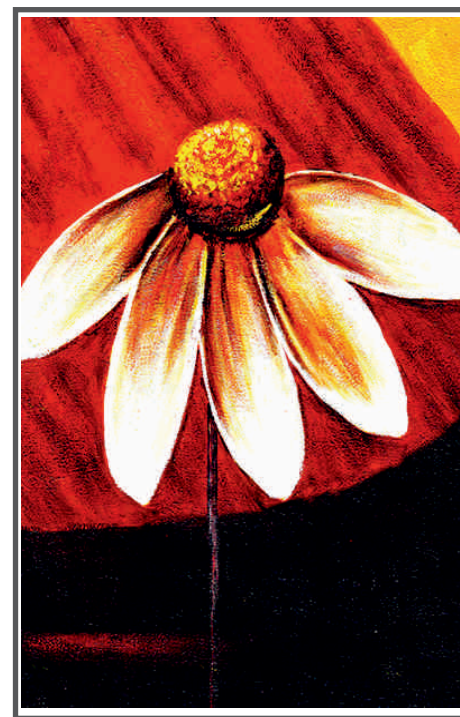
Panel

Combi

Roller



Product Code: Canvas art-22A
5' (W) x 8' (H) | 60" x 96" = 40.0 SQF



Product Code: Canvas art-22B
4' (W) x 6' (H) | 48" x 72" = 24.0 SQF

Application for (Blinds):

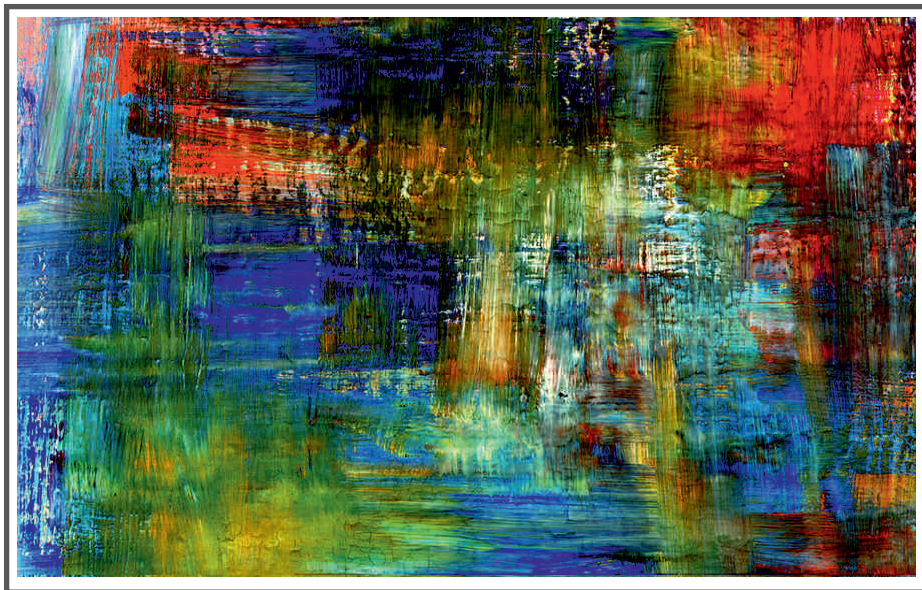


Roman

Panel

Combi

Roller



Product Code: Canvas art-23A
9' (W) x 6' (H) | 108" x 72" = 54.0 SQF



Product Code: Canvas art-23B
4' (W) x 6' (H) | 48" x 72" = 24.0 SQF

Application for (Blinds):

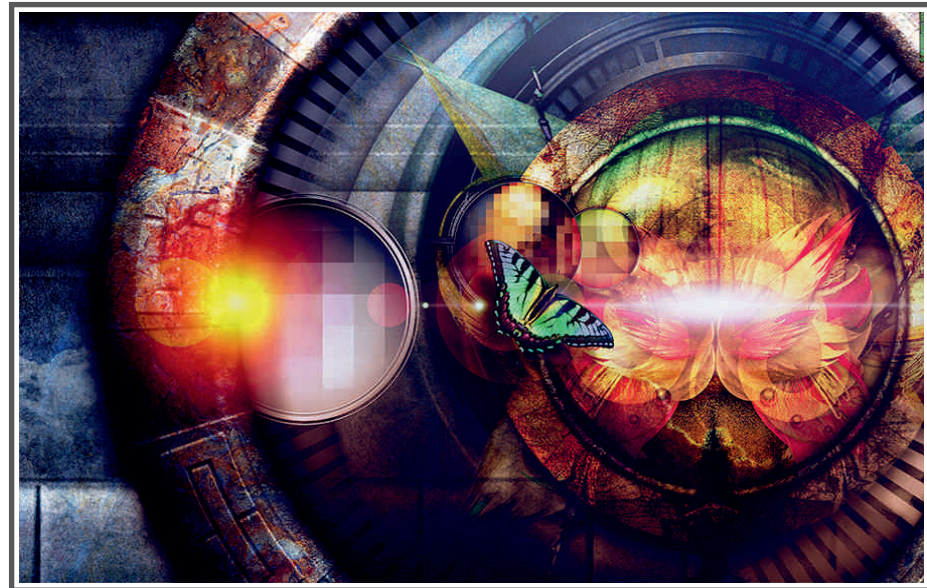


Roman

Panel

Combi

Roller



Product Code: Canvas art-24A
 9' (W) x 6' (H) | 108" x 72" = 54.0 SQF



Product Code: Canvas art-24B
 4' (W) x 6' (H) | 48" x 72" = 24.0 SQF

Application for (Blinds):



Roman

Panel

Combi

Roller





Product Code: Canvas art- 25A
8' (W) x 5' (H) | 96" x 60" = 40.0 SQF



Product Code: Canvas art- 25B
4' (W) x 6' (H) | 48" x 72" = 24.0 SQF

Product Code: Canvas art-17C
8' (W) x 5' (H) | 96" x 60" = 40.0 SQF

Application for (Blinds):

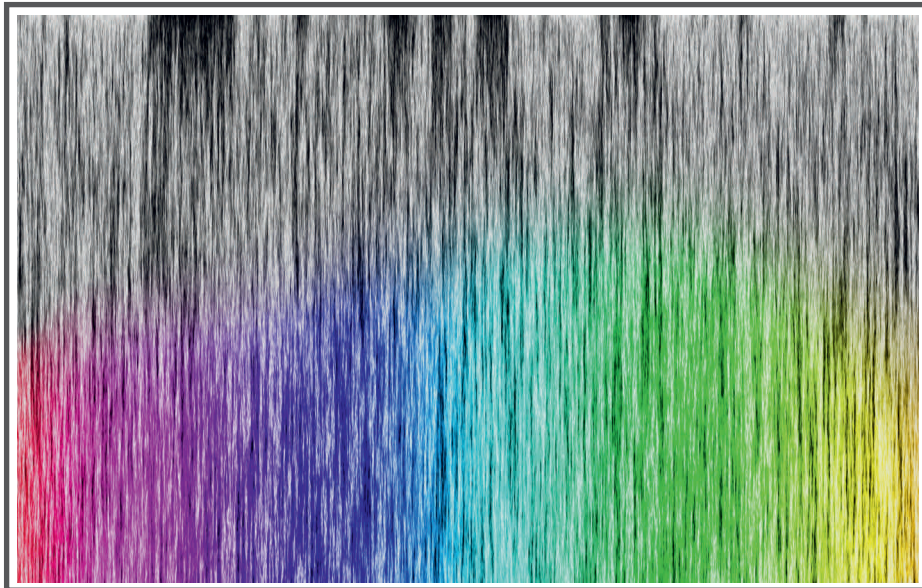


Roman

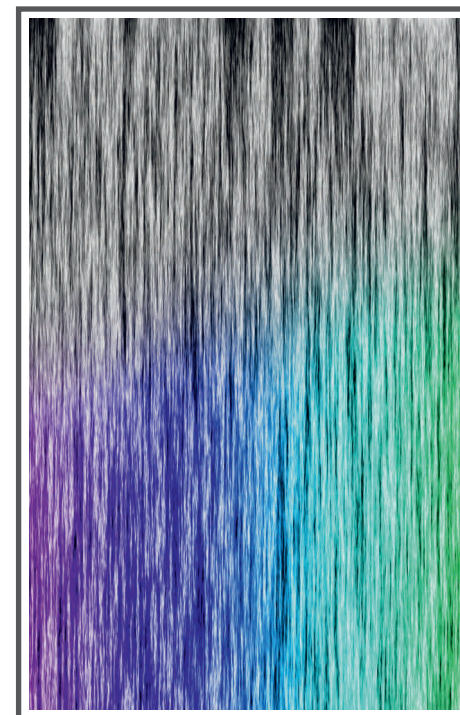
Panel

Combi

Roller



Product Code: Canvas art-26A
9' (W) x 6' (H) | 108" x 72" = 54.0 SQF



Product Code: Canvas art-26B
4' (W) x 6' (H) | 48" x 72" = 24.0 SQF

Application for (Blinds):

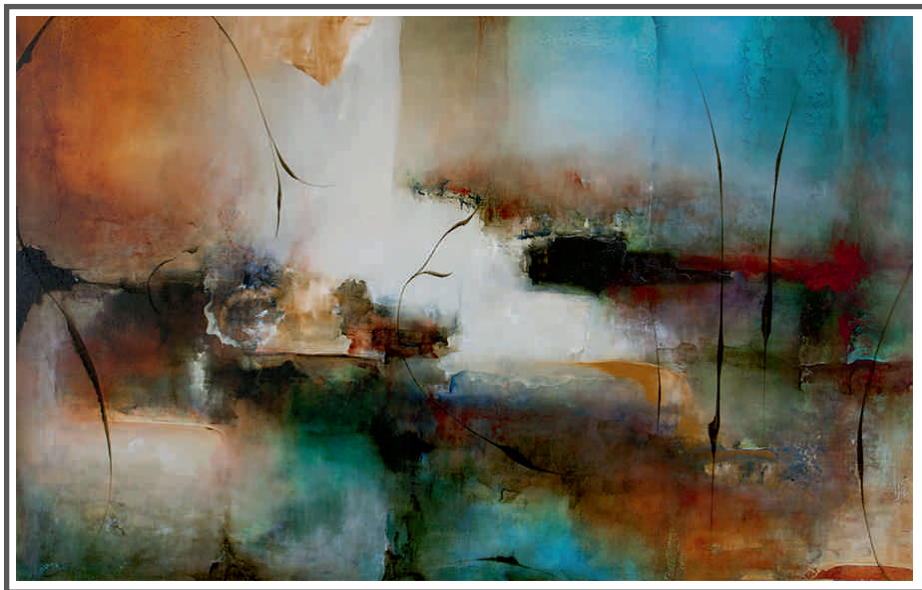


Roman

Panel

Combi

Roller



Product Code: Canvas art-27A
9' (W) x 6' (H) | 108" x 72" = 54.0 SQF



Product Code: Canvas art-27B
4' (W) x 6' (H) | 48" x 72" = 24.0 SQF

Application for (Blinds):



Roman

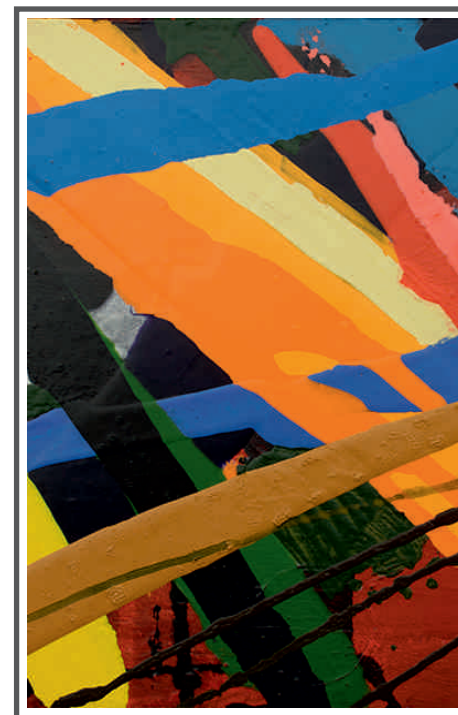
Panel

Combi

Roller



Product Code: Canvas art-28A
9' (W) x 6' (H) | 108" x 72" = 54.0 SQF



Product Code: Canvas art-28B
4' (W) x 6' (H) | 48" x 72" = 24.0 SQF

Application for (Blinds):



Roman

Panel

Combi

Roller





Product Code: Canvas art-29A
9' (W) x 6' (H) | 108" x 72" = 54.0 SQF



Product Code: Canvas art-29B
4' (W) x 6' (H) | 48" x 72" = 24.0 SQF

Application for (Blinds):



Roman

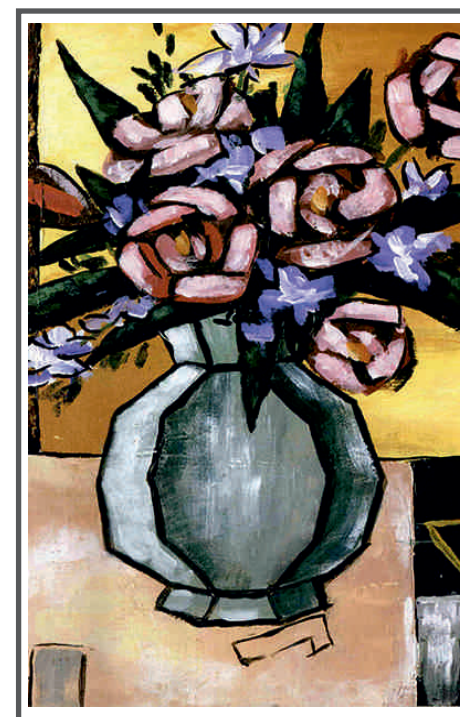
Panel

Combi

Roller



Product Code: Canvas art-30A
9' (W) x 6' (H) | 108" x 72" = 54.0 SQF



Product Code: Canvas art-30B
4' (W) x 6' (H) | 48" x 72" = 24.0 SQF

Application for (Blinds):

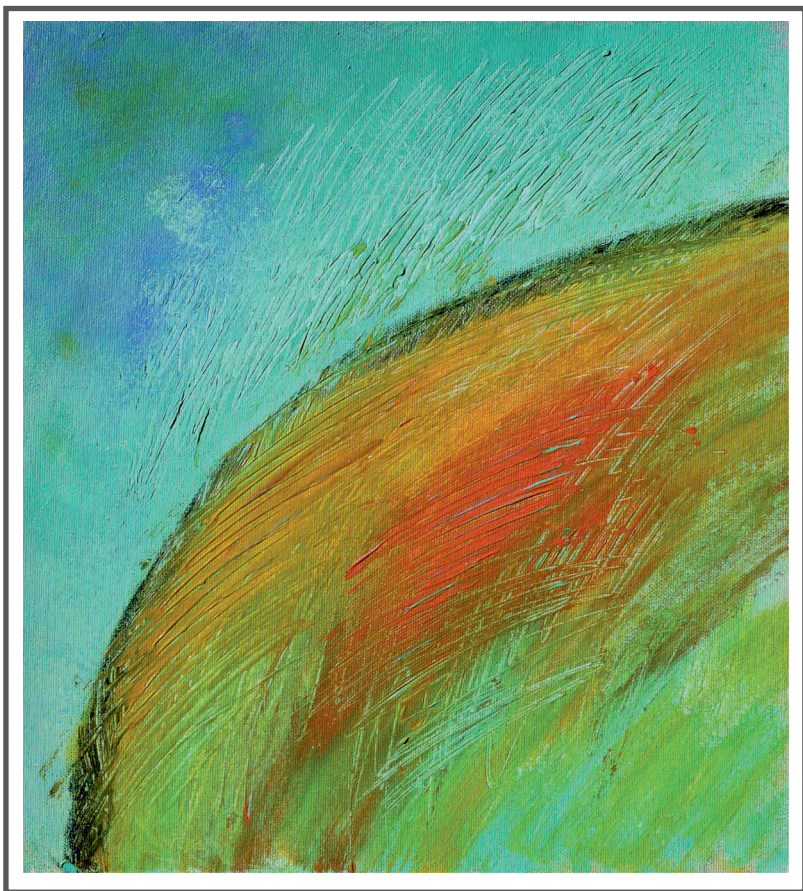


Roman

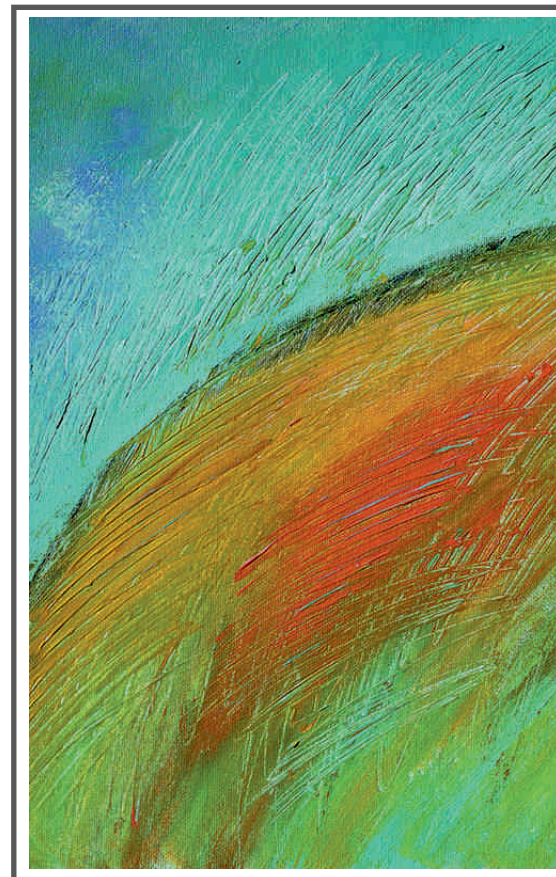
Panel

Combi

Roller



Product Code: Canvas art-31A
9' (W) x 10' (H) | 108" x 120" = 90.0 SQF



Product Code: Canvas art-31B
5' (W) x 8' (H) | 60" x 96" = 40.0 SQF

Application for (Blinds):



Roman

Panel

Combi

Roller

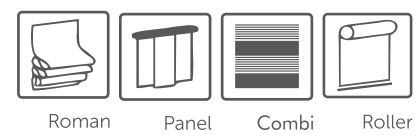


Product Code: Canvas art-32A
9' (W) x 10' (H) | 108" x 120" = 90.0 SQF

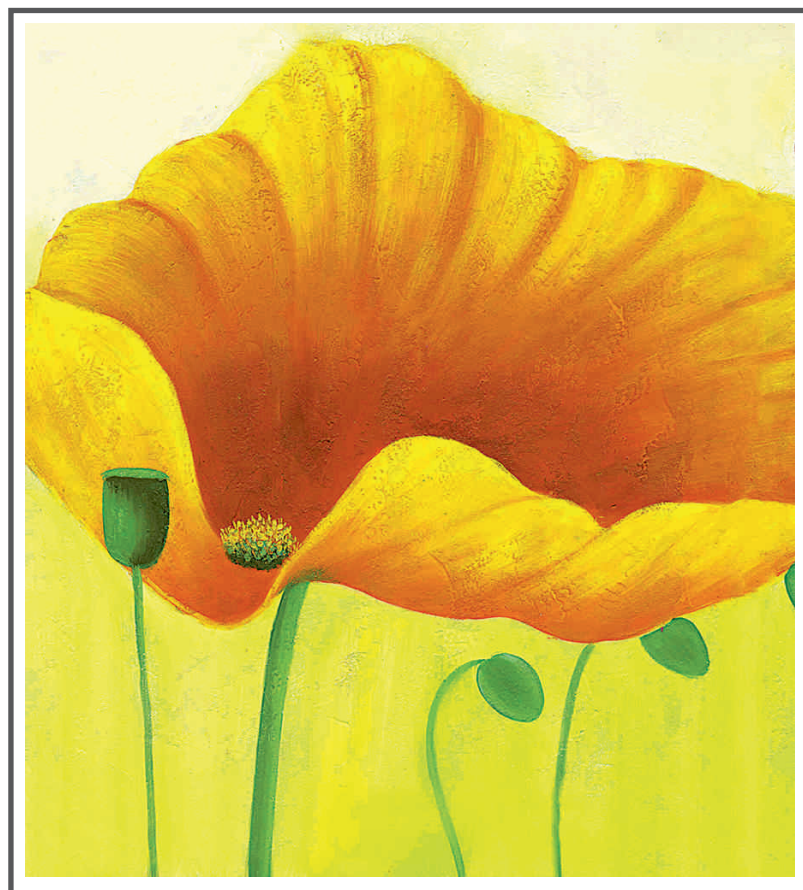


Product Code: Canvas art-32B
5' (W) x 8' (H) | 60" x 96" = 40.0 SQF

Application for (Blinds):







Product Code: Canvas art-33A
9' (W) x 10' (H) | 108" x 120" = 90.0 SQF



Product Code: Canvas art-33B
5' (W) x 8' (H) | 60" x 96" = 40.0 SQF

Application for (Blinds):



Roman Panel Combi Roller

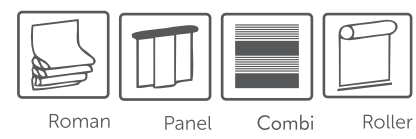


Product Code: Canvas art-34A
9' (W) x 10' (H) | 108" x 120" = 90.0 SQF



Product Code: Canvas art-34B
5' (W) x 8' (H) | 60" x 96" = 40.0 SQF

Application for (Blinds):





Product Code: Canvas art-35A
9' (W) x 10' (H) | 108" x 120" = 90.0 SQF



Product Code: Canvas art-35B
5' (W) x 8' (H) | 60" x 96" = 40.0 SQF

Application for (Blinds):

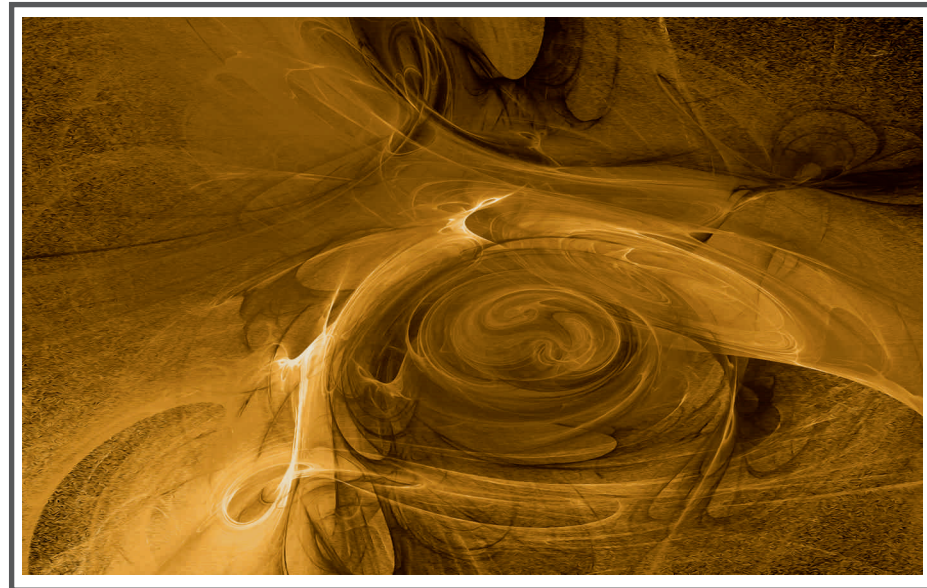


Roman

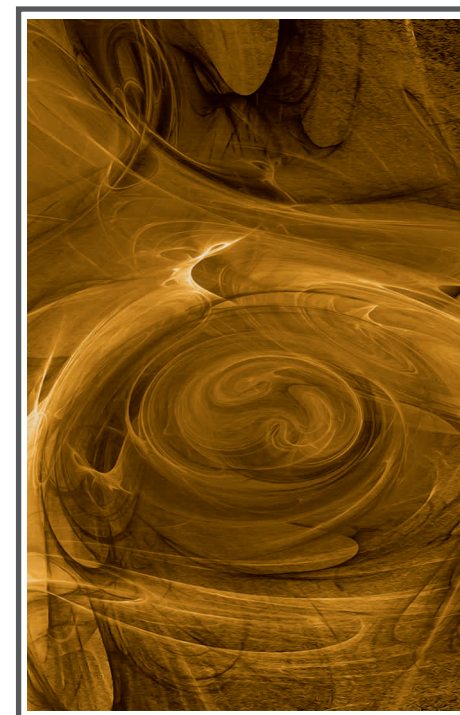
Panel

Combi

Roller



Product Code: Canvas art-36A
9' (W) x 6' (H) | 108" x 72" = 54.0 SQF



Product Code: Canvas art-36B
4' (W) x 6' (H) | 48" x 72" = 24.0 SQF

Application for (Blinds):



Roman

Panel

Combi

Roller





Product Code: Canvas art-37A
9' (W) x 10' (H) | 108" x 120" = 90.0 SQF



Product Code: Canvas art-37B
5' (W) x 8' (H) | 60" x 96" = 40.0 SQF

Application for (Blinds):



Roman

Panel

Combi

Roller



Product Code: Canvas art-38A
 9' (W) x 10' (H) | 108" x 120" = 90.0 SQF



Product Code: Canvas art-38B
 5' (W) x 8' (H) | 60" x 96" = 40.0 SQF

Application for (Blinds):

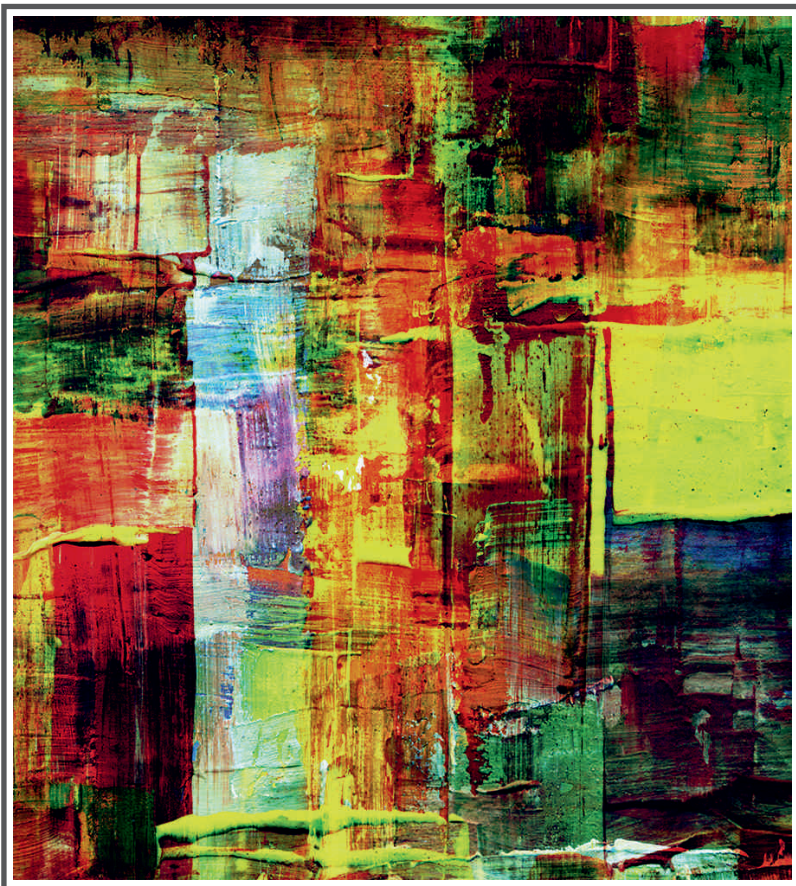


Roman

Panel

Combi

Roller



Product Code: Canvas art-39A
9' (W) x 10' (H) | 108" x 120" = 90.0 SQF



Product Code: Canvas art-39B
5' (W) x 8' (H) | 60" x 96" = 40.0 SQF

Application for (Blinds):



Roman

Panel

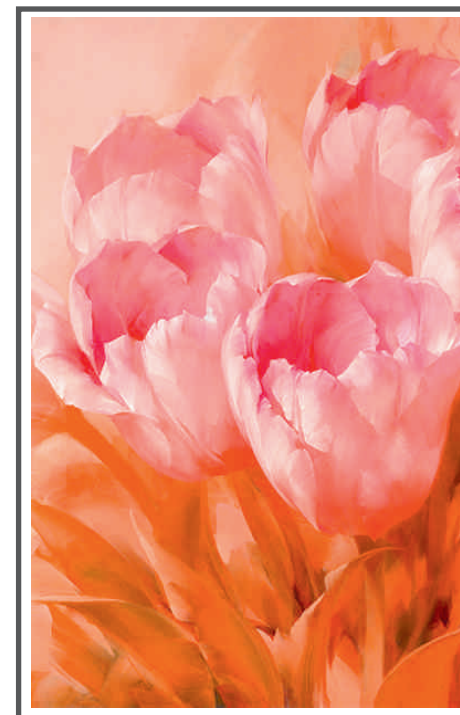
Combi

Roller





Product Code: Canvas art-40A
9' (W) x 6' (H) | 108" x 72" = 54.0 SQF



Product Code: Canvas art-40B
4' (W) x 6' (H) | 48" x 72" = 24.0 SQF

Application for (Blinds):



Roman

Panel

Combi

Roller